

**INSTRUMENT APPROACH
CHART (IAC)**

ANGRA DOS REIS / Angra dos Reis (SDAG)

RNP RWY 10

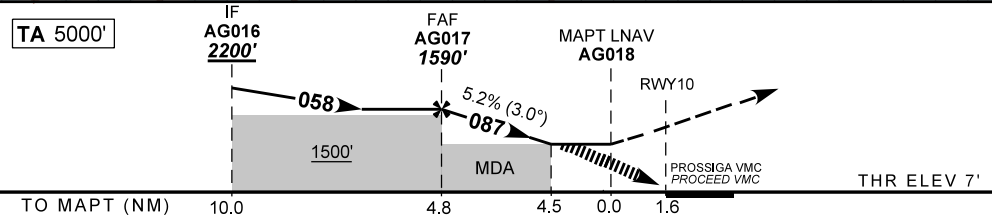
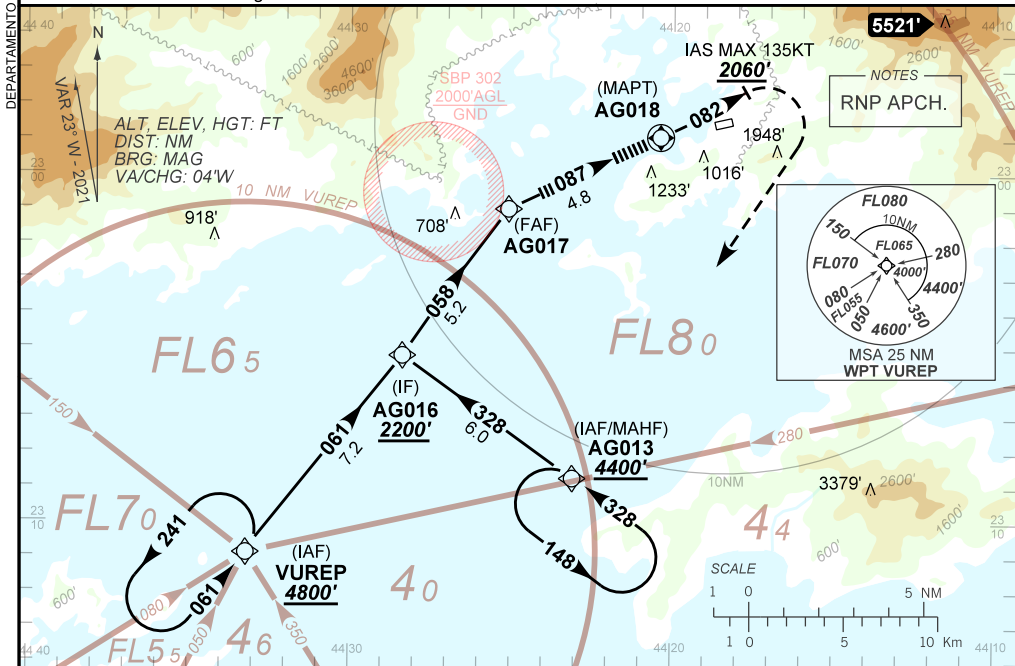
(CAT A, B)

AD ELEV: 10'

ATIS NIL	APP RIO 119.00 120.55 121.35 123.90 124.70 125.60 126.20 129.80 132.50 133.30 133.70	FCA OESTE 134.45	FCA ANGRA 125.275
NA	FINAL CRS 087°	FAF: 1590'	NA
		LNAV MDA / (OCH): 1510' / (1500')	

APCH Perdida: Subir para **4400'**, gradiente MNM 5%. Curvar à ESQUERDA no rumo **082** até **2060'**. Após, curvar à DIREITA direto AG013 para espera.

Missed APCH: Climb to **4400'**, MNM gradient 5%. Turn LEFT course **082** until **2060'**. After, turn RIGHT direct to AG013 for holding.



	AG017	4.5	MAPT	Ground Speed (KT)	090	110	130	150	170	190
	1590	1510	ALT	FPM	500	600	700	NA		
	NIL		(HGT)	FAF-MAPT	NIL					

STRAIGHT-IN	CAT	A	B	C	D	E	
	MDA / (OCH)	1510' / (1500')			NA		
LNAV	ALS/NO ALS/ RVR ALS (m)	NIL / 5000 / NIL			NA		
CIRCLING	MDA / (OCH)	NA					
	VIS (m)						

CHANGES: NEW CHART.