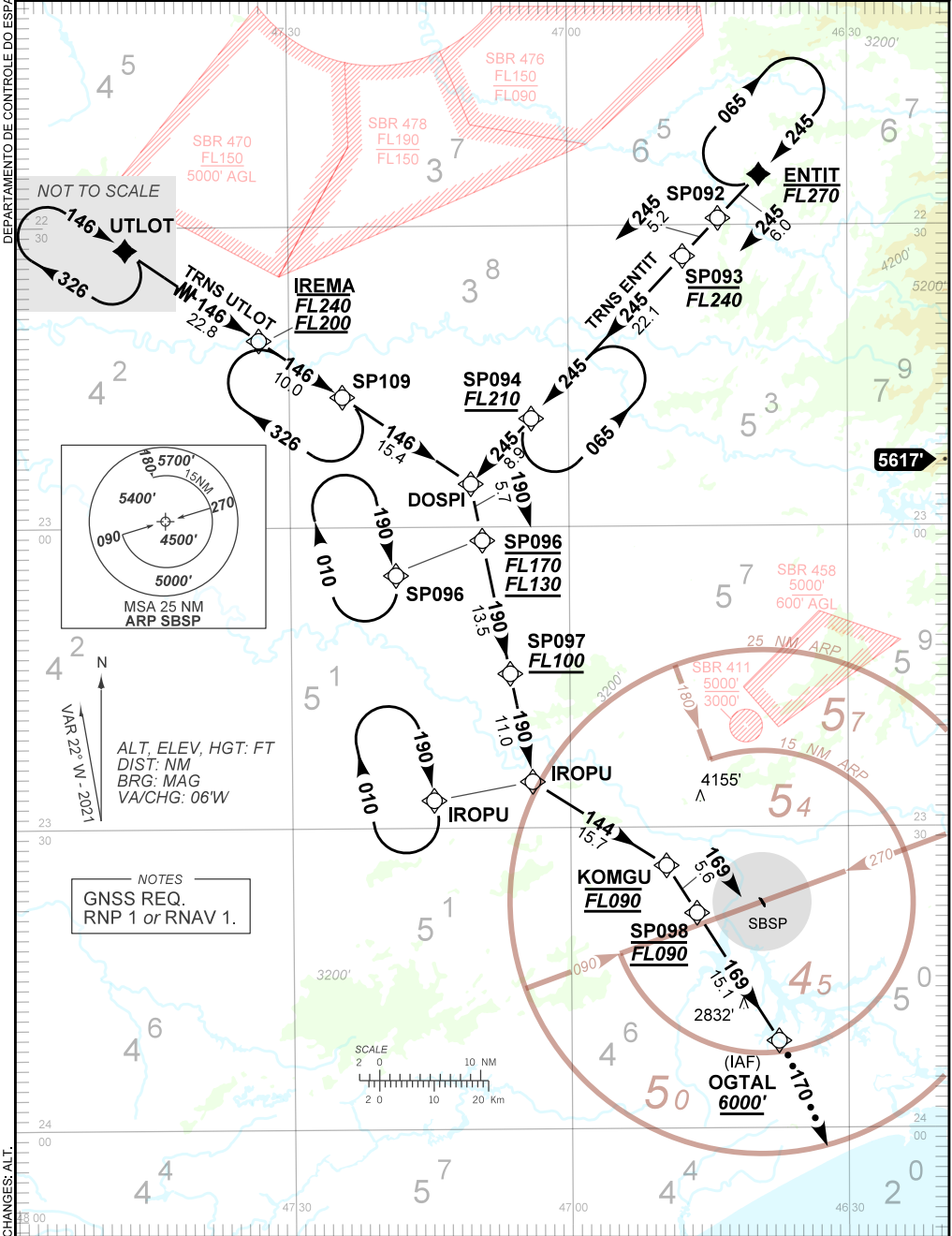


STANDARD ARRIVAL CHART
INSTRUMENT (STAR)

SÃO PAULO / Congonhas (SBSP)
RWY 35R/35L
RNAV DOSPI 1B

AD ELEV: 2631'

TA 8000'	D-ATIS 127.65	ACC BRASÍLIA 123.35 125.325 126.15 128.50 134.50	APP SÃO PAULO 129.75 119.15 120.45 120.85 133.85	TWR SÃO PAULO 127.15 118.05
----------	------------------	--------------------------------------------------------	--------------------------------------------------------	--------------------------------



NOTES
GNSS REQ.
RNP 1 or RNAV 1.

ALT, ELEV, HGT: FT
DIST: NM
BRG: MAG
VA/CHG: 06°W



DEPARTAMENTO DE CONTROLE DO ESPAÇO AÉREO

FALHA DE COMUNICAÇÕES
COMMUNICATION FAILURE

CHEGADA DOSPI 1B / DOSPI 1B ARRIVAL

Acionar transponder A7600, então completar chegada até OGTAL e executar o procedimento autorizado pelo ATC.

Set transponder A7600, then complete arrival up to OGTAL and perform procedure authorized by ATC.

CHANGES: ALT.