

**INSTRUMENT APPROACH
CHART (IAC)**

BAURU / Bauru - Arealva (SBAE)

AD ELEV: 1961'

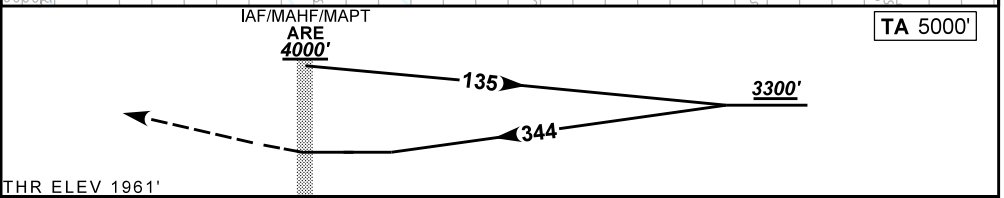
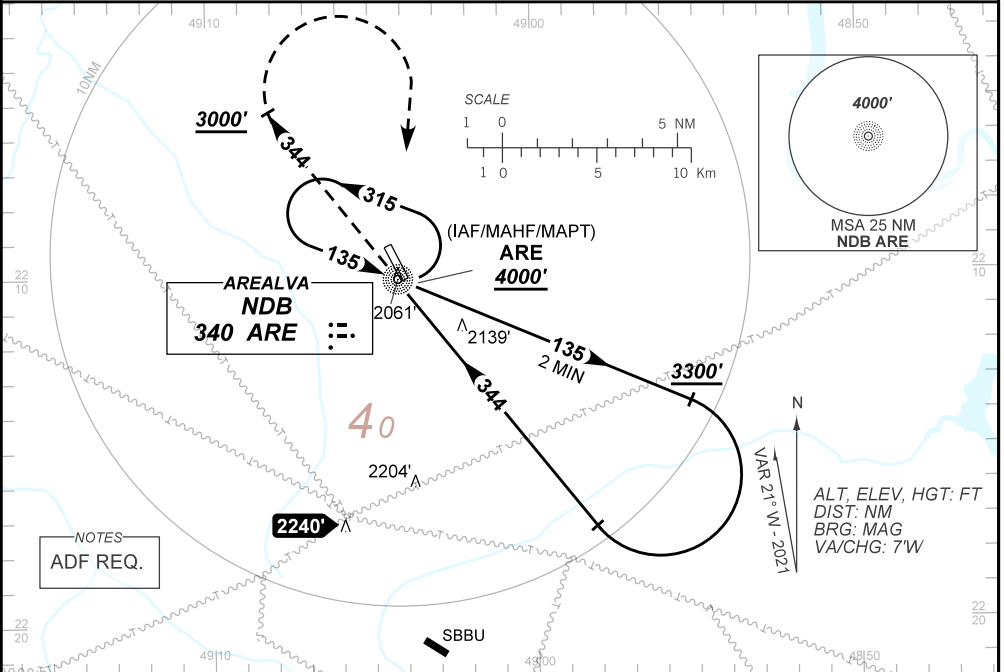
NDB RWY 35

| | | | |
|--------------------|---------------------|------------------------|---|
| ATIS NIL | APP BAURU 121.30 | AFIS AREALVA 126.60 | GNDC NIL |
| NDB ARE 340 KHz | FINAL CRS 344° | N/A | NDB MDA / (OCH): 2460' / (500') |

APCH Perdida: 1) Subir para **4000'**. Manter proa **344** até cruzar **3000'**. Após, curvar à DIREITA direto NDB ARE para espera. 2) IAS MAX 230 KT.

Missed APCH: 1) Climb to **4000'**. Maintain heading **344** until passing **3000'**. After, turn RIGHT direct ARE NDB for holding. 2) IAS MAX 230 KT.

DEPARTAMENTO DE CONTROLE DO ESPAÇO AÉREO



| | | | | | | | | |
|-------|-----|-------------------|-----|-----|-----|-----|-----|-----|
| RWY35 | NIL | Ground Speed (KT) | 090 | 110 | 130 | 150 | 170 | 190 |
| ALT | NIL | FPM | 650 | | | | | |
| (HGT) | NIL | FAF-MAPT | NA | | | | | |

| STRAIGHT-IN | CAT | A | B | C | D | E |
|-------------|-------------------------|------------------|---|------------------|---|---|
| NDB | MDA / (OCH) | 2460' / (500') | | | | |
| | ALS/NO ALS/ RVR ALS (m) | NIL / 1600 / NIL | | NIL / 2300 / NIL | | |
| CIRCLING | MDA / (OCH) | NA | | | | |
| | VIS (m) | | | | | |

CHANGES: FREQ LAYOUT