

**INSTRUMENT APPROACH
CHART (IAC)**

SALVADOR / Deputado Luís Eduardo Magalhães, INTL (SBSV)

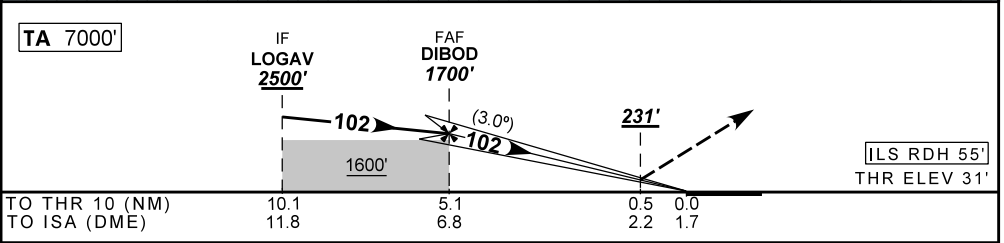
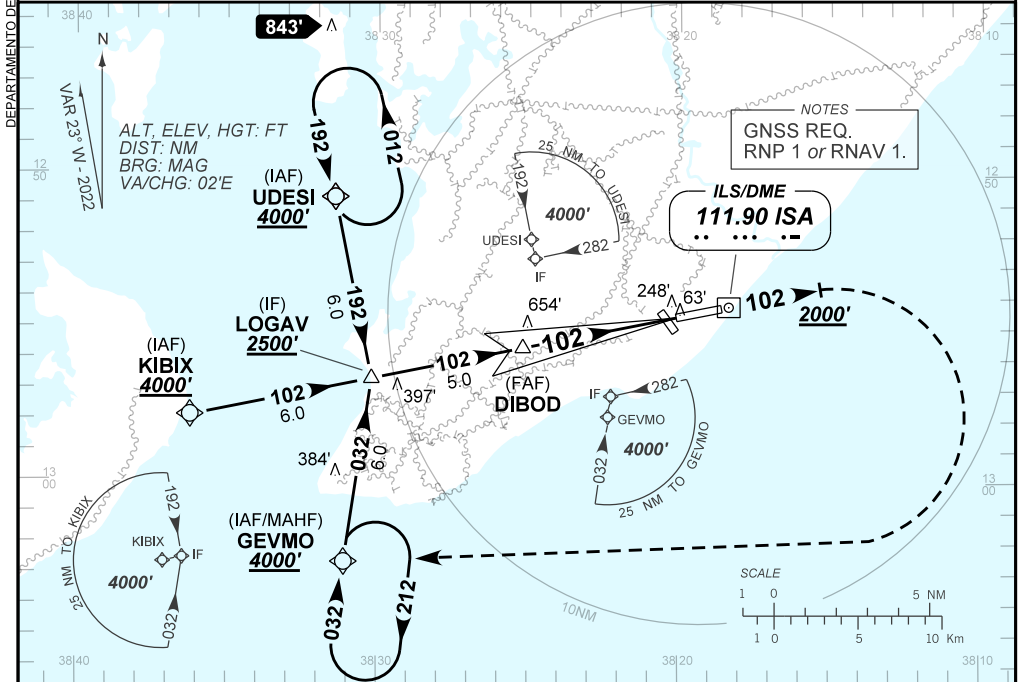
AD ELEV: 66'

ILS Z RWY 10

D-ATIS 127.75	APP SALVADOR 119.35 119.80 120.80 129.45	TWR SALVADOR 118.30 118.60 118.95 121.10	GNDC SALVADOR 121.90
LOC ISA 111.90 MHz	FINAL CRS 102°	FAF: 1700'	CAT / DA / (OCH): 231' / (200')

APCH Perdida: Subir para **4000'**. Manter proa **102** até cruzar **2000'**. Então, curvar à DIREITA direto GEVMO para espera.

Missed APCH: Climb to **4000'**. Maintain heading **102** until passing **2000'**. Then, turn RIGHT direct to GEVMO for holding.



TO THR 10 (NM) TO ISA (DME)	NIL	RWY10	Ground Speed (KT)	090	110	130	150	170	190
	NIL	ALT	FPM	NIL					
	NIL	(HGT)	FAF-MAPT	NA					

STRAIGHT-IN	CAT	A	B	C	D	E
CAT I	DA / (OCH)	231' / (200')				NA
	ALS/NO ALS/ RVR ALS (m)	NIL / 1200 / NIL				
CIRCLING	MDA / (OCH)	NA				
	VIS (m)					

CHANGES: LAYOUT, PROC.