

STANDARD ARRIVAL CHART
INSTRUMENT (STAR)

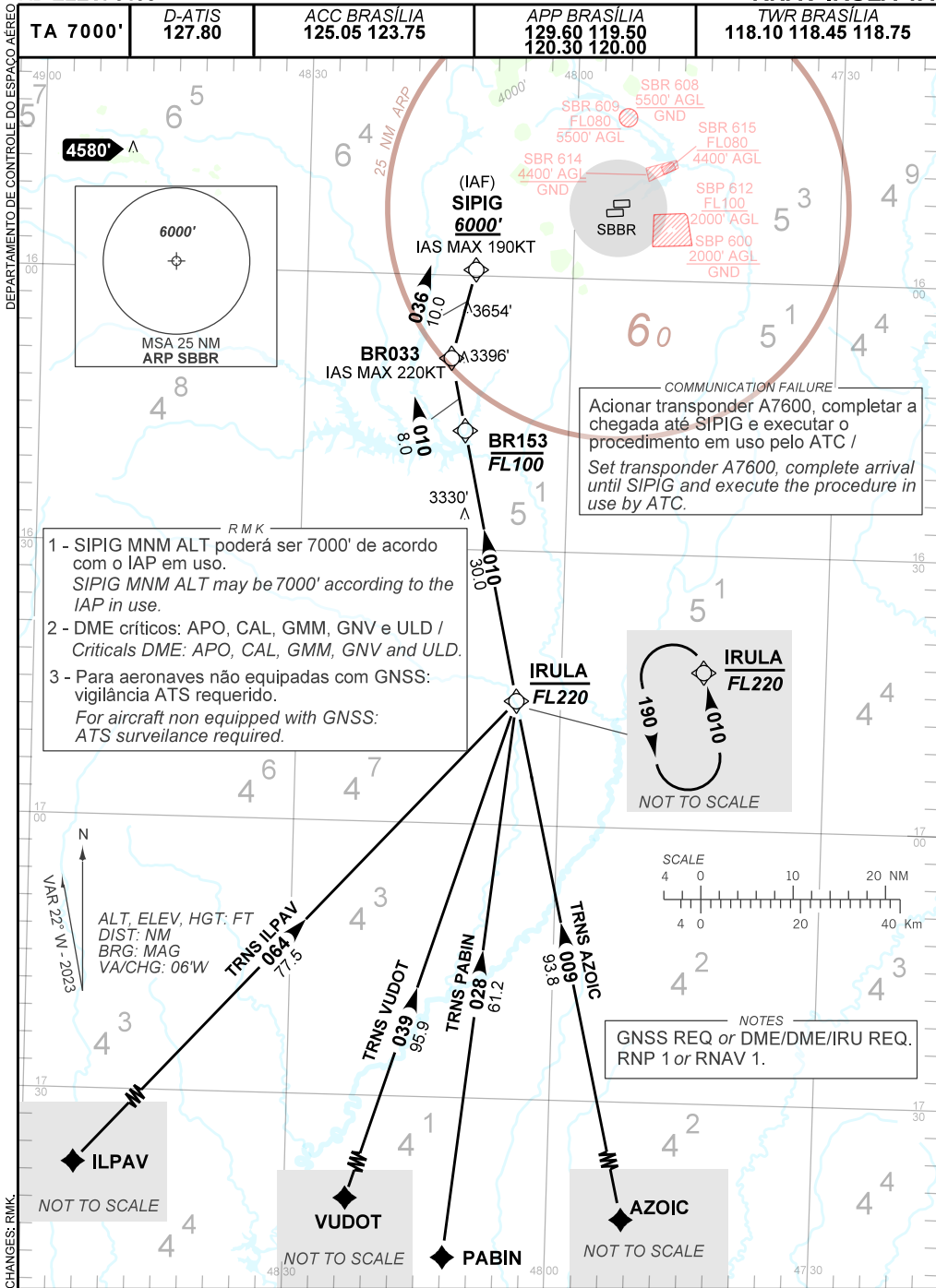
BRASÍLIA / Pres. Juscelino Kubitschek, INTL (SBBR)

RWY 11L / 11R

RNAV IRULA 1A

AD ELEV: 3498'

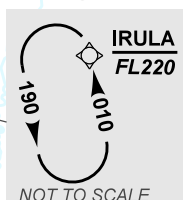
TA 7000'	D-ATIS 127.80	ACC BRASÍLIA 125.05 123.75	APP BRASÍLIA 129.60 119.50 120.30 120.00	TWR BRASÍLIA 118.10 118.45 118.75
----------	---------------	----------------------------	--	-----------------------------------



- RMK*
- 1 - SIPIG MNM ALT poderá ser 7000' de acordo com o IAP em uso.
SIPIG MNM ALT may be 7000' according to the IAP in use.
 - 2 - DME críticos: APO, CAL, GMM, GNV e ULD /
Criticals DME: APO, CAL, GMM, GNV and ULD.
 - 3 - Para aeronaves não equipadas com GNSS:
vigilância ATS requerido.
*For aircraft non equipped with GNSS:
ATS surveillance required.*

COMMUNICATION FAILURE

Acionar transponder A7600, completar a chegada até SIPIG e executar o procedimento em uso pelo ATC /
Set transponder A7600, complete arrival until SIPIG and execute the procedure in use by ATC.



NOTES

GNSS REQ or DME/DME/IRU REQ.
RNP 1 or RNAV 1.

CHANGES: RMK.