

**INSTRUMENT APPROACH
CHART (IAC)
AD ELEV: 13'**

GUARUJÁ / Santos, MIL (SBST)

**RNP 076
PINS - (CAT H)**

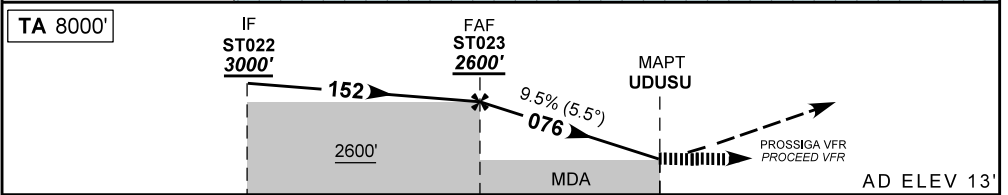
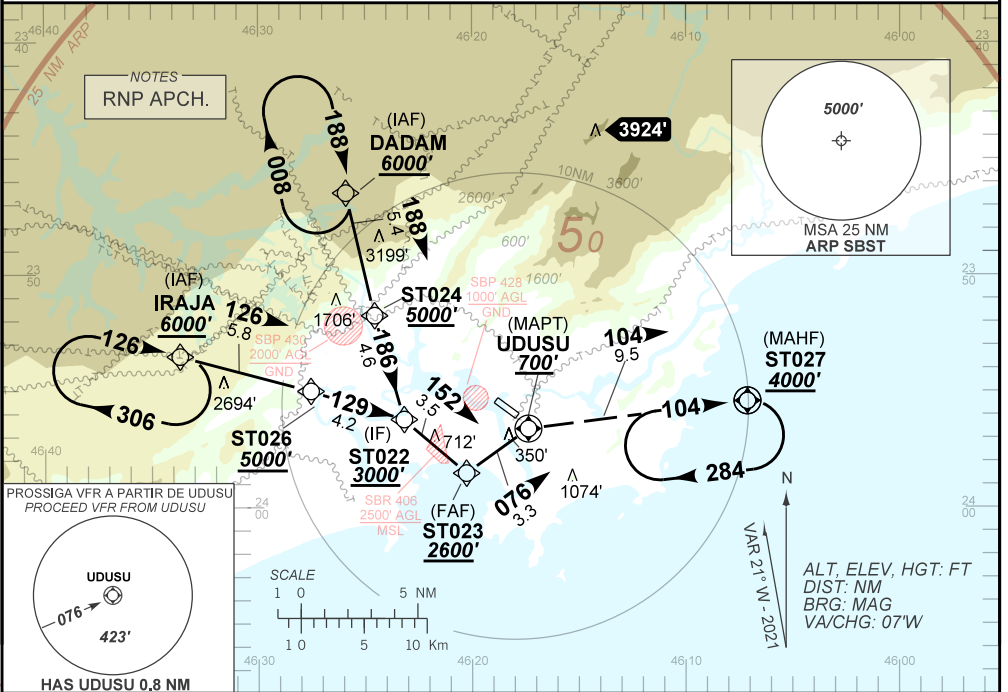
DEPARTAMENTO DE CONTROLE DO ESPAÇO AÉREO

ATIS NIL	APP SÃO PAULO 119.60 122.75 129.00 133.85 135.75	AFIS SANTOS 118.65 132.225	GNDC NIL
-------------	--------------------------------------------------------	-------------------------------	-------------

N/A	FINAL CRS 076°	FAF: 2600'	N/A	RNAV MDA / (OCH): 700' / (690')
-----	-------------------	---------------	-----	------------------------------------

APCH Perdida: Subir para **4000'** curvando à DIREITA no rumo **105** até ST027 para espera.
Missed APCH: Climbing RIGHT turn to **4000'**. Maintain course **105** up to ST027 for holding.

RMK: 1) Requerido FPL "Y" com mudança de regras de voo em UDUSU.
1) FPL "Y" required with flight rules change at UDUSU.



TO UDUSU (NM) 6.8 3.3 0.0

			ST023	2.0	1.0	UDUSU	KT	060	070	080	090
			2600	1813	1206	ALT	FPM	600	700	800	900
			2587	1800	1193	(HGT)	FAF-MAPT	NA			

STRAIGHT-IN	CAT	H
	MDA / (OCH)	700' / (690')
LNAV	MDA / (OCH)	700' / (690')
	VIS (m)	1500
CIRCLING	MDA / (OCH)	NA
	VIS (m)	NA

CHANGES: NIL