

INSTRUMENT APPROACH  
CHART (IAC)

BAURU / Bauru (SBBU)

AD ELEV: 2025'

NDB RWY 14

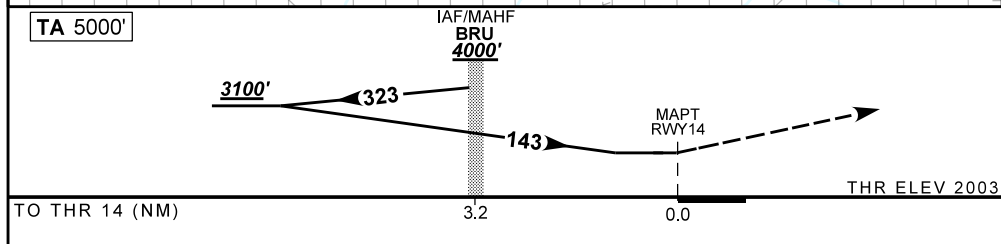
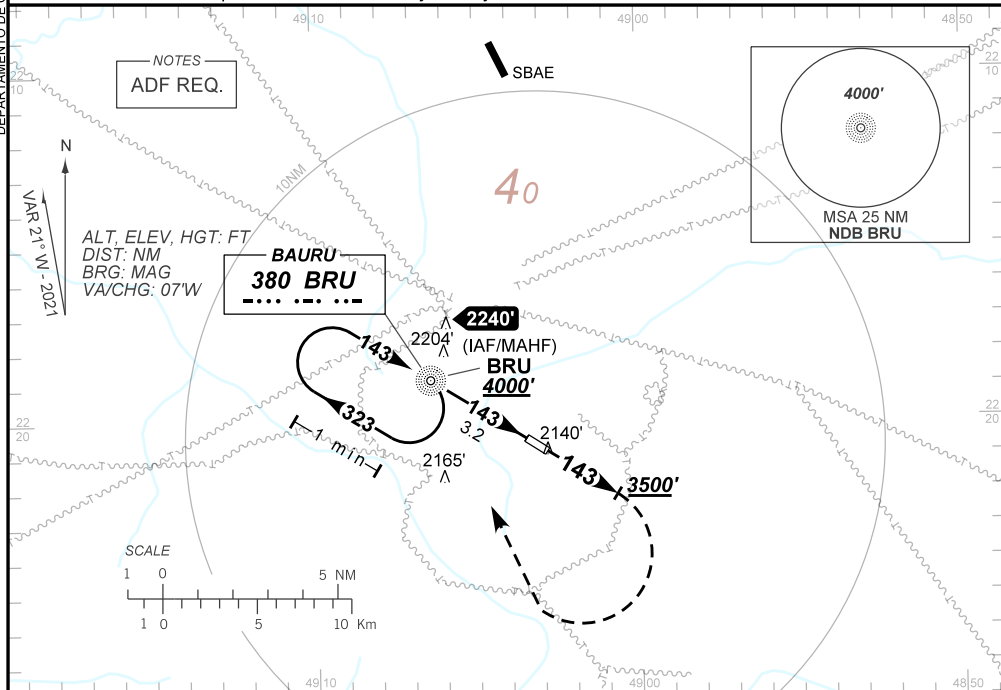
ATIS 127.875	TWR NIL	AFIS BAURU 121.30	GNDC NIL
NDB BRU 380 KHz	FINAL CRS 143°	FAF: N/A	NDB MDA / (OCH): 2430' / (430')

APCH Perdida: Subir para 4000'. Manter QDR 143 do NDB BRU até cruzar 3500'. Após, curvar à DIREITA direto BRU para espera.

Missed APCH: Climb to 4000'. Maintain 143 QDR NDB BRU until 3500'. After, turn RIGHT direct BRU for holding.

RMK: Circular somente pelo Setor S/SW. / Only overfly S/SW Sectors of the AD.

DEPARTAMENTO DE CONTROLE DO ESPAÇO AEREO



NIL	RWY 14	Ground Speed (KT)	090	110	130	150	170	190
NIL	ALT	FPM	650					
NIL	(HGT)	BRU-MAPT	1 MIN					

STRAIGHT-IN	CAT	A	B	C	D	E
NDB	MDA / (OCH)	2430' / (430')		NA		
	ALS/NO ALS/ RVR ALS (m)	NIL / 1600 / NIL				
CIRCLING	MDA / (OCH)	2440' / (440')	2520' / (520')	NA		
	VIS (m)	NIL / 1600 / NIL	NIL / 1600 / NIL			

CHANGES: LAYOUT, PROC. VAR.