

**INSTRUMENT APPROACH  
CHART (IAC)**

**CAMPINAS / Viracopos, INTL (SBKP)**

**AD ELEV: 2170'**

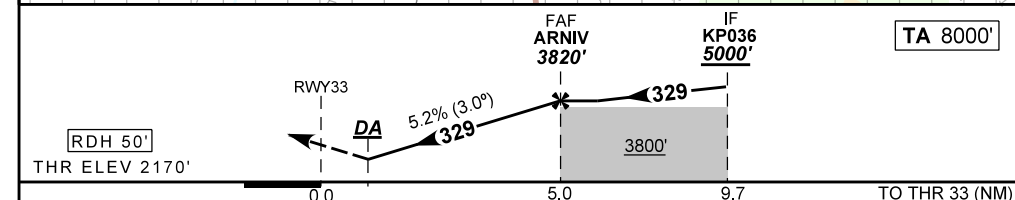
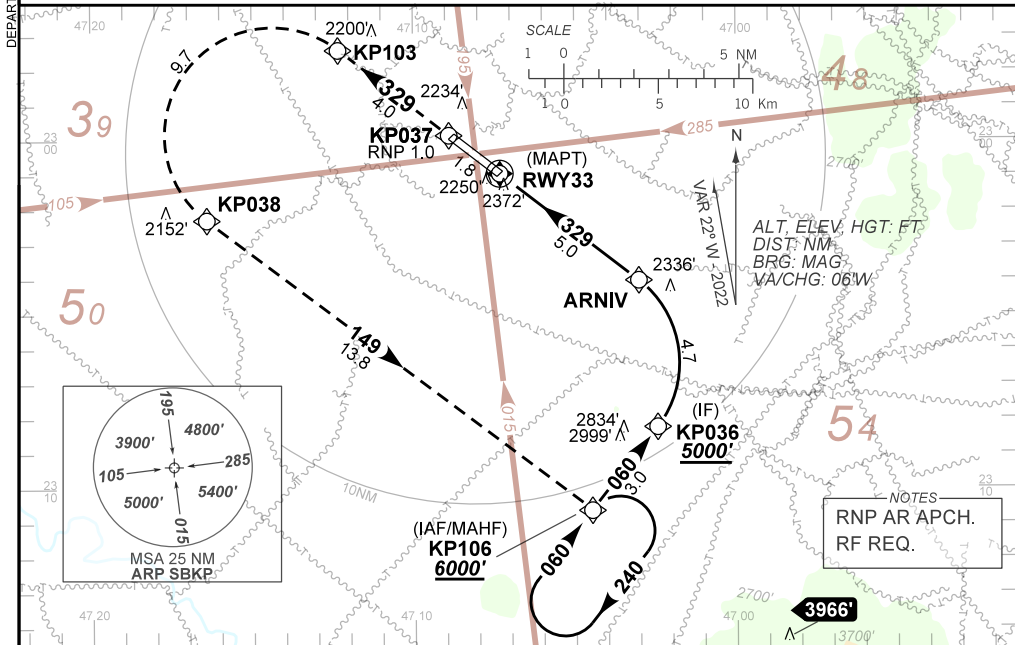
**RNP W RWY 33 (AR)**

D-ATIS <b>127.825</b>	APP SÃO PAULO <b>119.05 119.15 119.25 119.60 119.80 120.05 120.25 120.85 121.40 122.75 123.25 124.15</b>	TWR CAMPINAS <b>118.25</b>	GNDC CAMPINAS <b>121.90</b>
--------------------------	---	-------------------------------	--------------------------------

TEMP LNAV/VNAV <b>MIN -10° C / MAX 45° C</b>	FINAL CRS <b>329°</b>	FAF: <b>3820'</b>	RNP 0.3 DA / (OCH): <b>2533' / (363')</b>	RNP 0.15 DA / (OCH): <b>2420' / (250')</b>
---	--------------------------	----------------------	--	---

APCH Perdida: 1) Subir para **6000'**. Manter rumo **329** até KP103. Após, curvar à ESQUERDA até KP038. Após, rumo **149** até KP106 para espera. 2) IAS MAX 190KT até KP038.  
Missed APCH: 1) Climb to **6000'**. Maintain course **329** until KP103. After, turn LEFT until KP038. After, course **149** until KP106 for holding. 2) IAS MAX 190KT until KP038.

RMK: Não efetuar transição para RNP da aproximação perdida antes de 0.63 NM da RWY33.  
Do not perform RNP transition of Missed APCH before 0.63 from RWY33.



RWY33	1.0	2.0	3.0	4.0	ARNIV	Ground Speed (KT)	090	110	130	150	170	190
ALT	2533	2857	3175	3494	3820	FPM	500	600	700	800	900	NA
(HGT)	363	687	1005	1324	1650	FAF-MAPT	NA					

STRAIGHT-IN	CAT	A	B	C	D	E
	DA / (OCH)			2420' / (250')		
RNP 0.15	ALS/NO ALS/ RVR ALS (m)			NIL / 1300 / NIL		NA
RNP 0.3	DA / (OCH)			2533' / (363')		
	ALS/NO ALS/ RVR ALS (m)			NIL / 1700 / NIL		

**AUTORIZAÇÃO ESPECIAL PARA AERONAVE E TRIPULAÇÃO REQUERIDA  
SPECIAL AUTHORIZATION FOR AIRCRAFT AND CREW REQUIRED**

CHANGES: LAYOUT.

DEPARTAMENTO DE CONTROLE DO ESPAÇO AÉREO