

STANDARD ARRIVAL CHART
INSTRUMENT (STAR)

SALVADOR / Deputado Luis Eduardo Magalhães, INTL (SBSV)
RWY 10

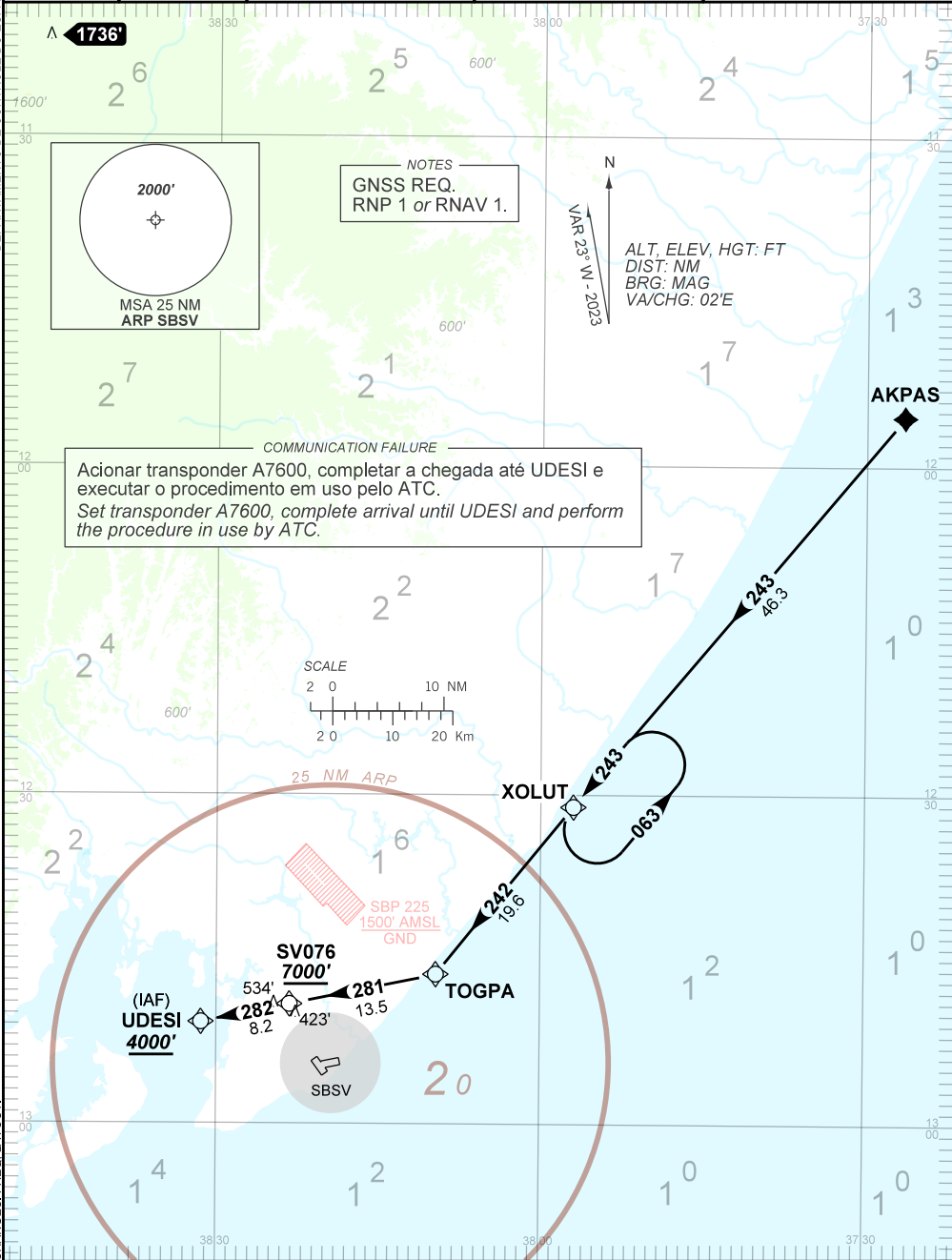
RNAV AKPAS 1A

AD ELEV: 66'

TA 7000'	D-ATIS 127.775	ACC RECIFE 125.45 126.85	APP SALVADOR 119.35 119.80 120.80 129.45	TWR SALVADOR 118.60 118.95 121.10
----------	-------------------	-----------------------------	--	--------------------------------------

DEPARTAMENTO DE CONTROLE DO ESPAÇO AÉREO

CHANGES: FREQ. LAYOUT.



COMMUNICATION FAILURE

Acionar transponder A7600, completar a chegada até UDESI e executar o procedimento em uso pelo ATC.
Set transponder A7600, complete arrival until UDESI and perform the procedure in use by ATC.

NOTES
GNSSE REQ.
RNP 1 or RNAV 1.

ALT, ELEV, HGT: FT
DIST: NM
BRG: MAG
VA/CHG: 02'E

