

**INSTRUMENT APPROACH  
CHART (IAC)**

**BARBACENA / Major Brigadeiro Doorgal Borges, MIL (SBBQ)**

**AD ELEV: 3658'**

**RNP RWY 18**

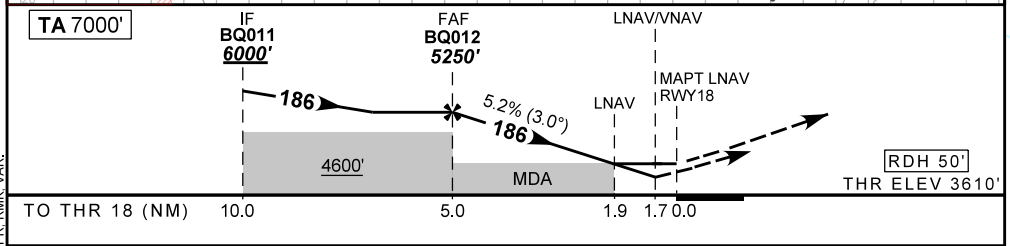
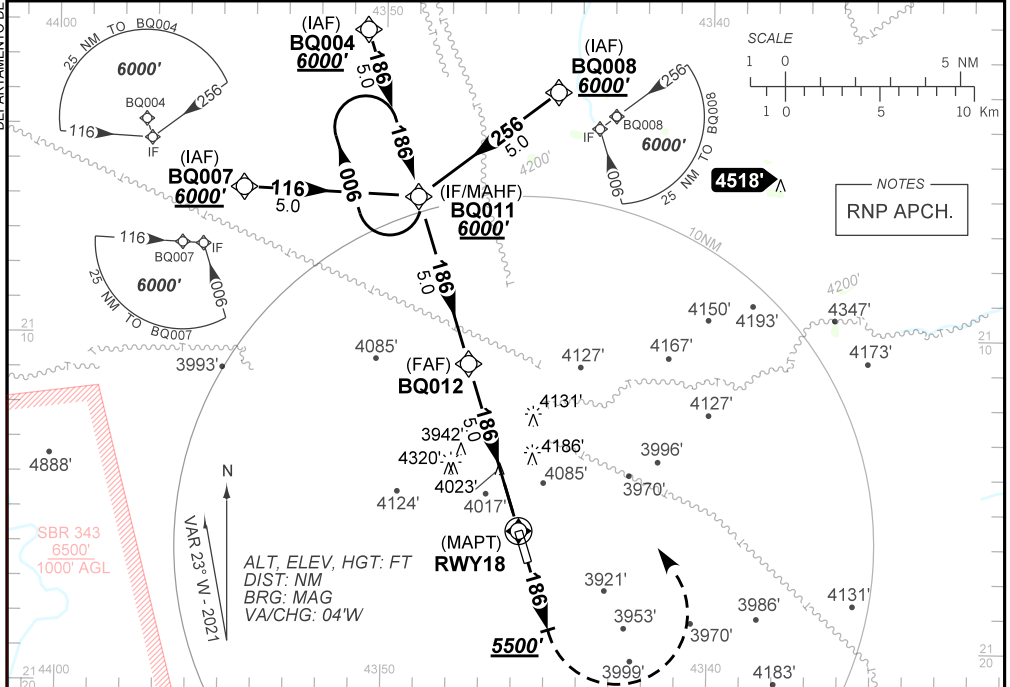
ATIS NIL	APP NIL	AFIS BARBACENA 125.90	TWR NIL	GNDC NIL
-------------	------------	--------------------------	------------	-------------

TEMP LNAV/VNAV <b>MIN -10°C / MAX 50°C</b>	FINAL CRS <b>186°</b>	FAF: <b>5250'</b>	LNAV/VNAV DA / (OCH): <b>4191' / (590')</b>	LNAV MDA / (OCH): <b>4270' / (660')</b>
---	--------------------------	----------------------	--	--

APCH Perdida: Subir para **6000'**. Manter o rumo **186** até **5500'**. Após, curvar à ESQUERDA direto BQ011 para espera.

Missed APCH: Climb to **6000'**. Maintain course **186** until **5500'**. After, turn LEFT direct BQ011 for holding.

RMK: NIL.



<b>BQ012</b>	<b>4.0</b>	<b>3.0</b>	<b>2.0</b>	<b>1.9</b>	<b>1.7</b>	<b>RWY18</b>	Ground Speed (KT)	090	110	130	150	170	190
<b>5250</b>	<b>4934</b>	<b>4615</b>	<b>4297</b>	<b>4270</b>	<b>4191</b>	ALT	FPM	500	600	700	800	900	NA
<b>1640</b>	<b>1324</b>	<b>1005</b>	<b>687</b>	<b>660</b>	<b>590</b>	(HGT)	FAF-MAPT	NIL					

STRAIGHT-IN	CAT	A	B	C	D	E	
	DA / (OCH)	4191' / (590')					NA
LNAV/VNAV	ALS/NO ALS/ RVR ALS (m)	NIL / 2700 / NIL					
	MDA / (OCH)	4270' / (660')					
LNAV	ALS/NO ALS/ RVR ALS (m)	NIL / 2700 / NIL			NIL / 3000 / NIL		
	CIRCLING	MDA / (OCH)	NA				
		VIS (m)					

AIRAC AMDT 2107A1 15 JUL 21

SBBQ\_IAC\_00G 1/1  
IAC RNP RWY 18

CHANGES: HDG, IDENT, LAYOUT, MINM, OPR, RMK, VAR.