

**INSTRUMENT APPROACH
CHART (IAC)**

CAMPO GRANDE / Campo Grande, INTL (SBCG)

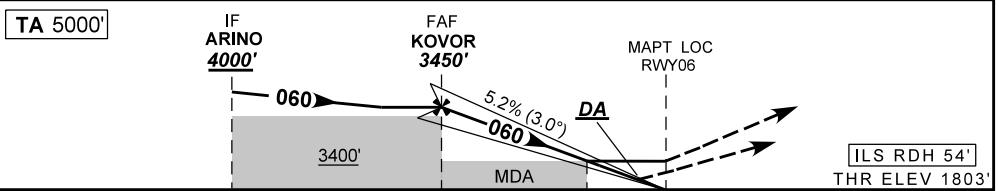
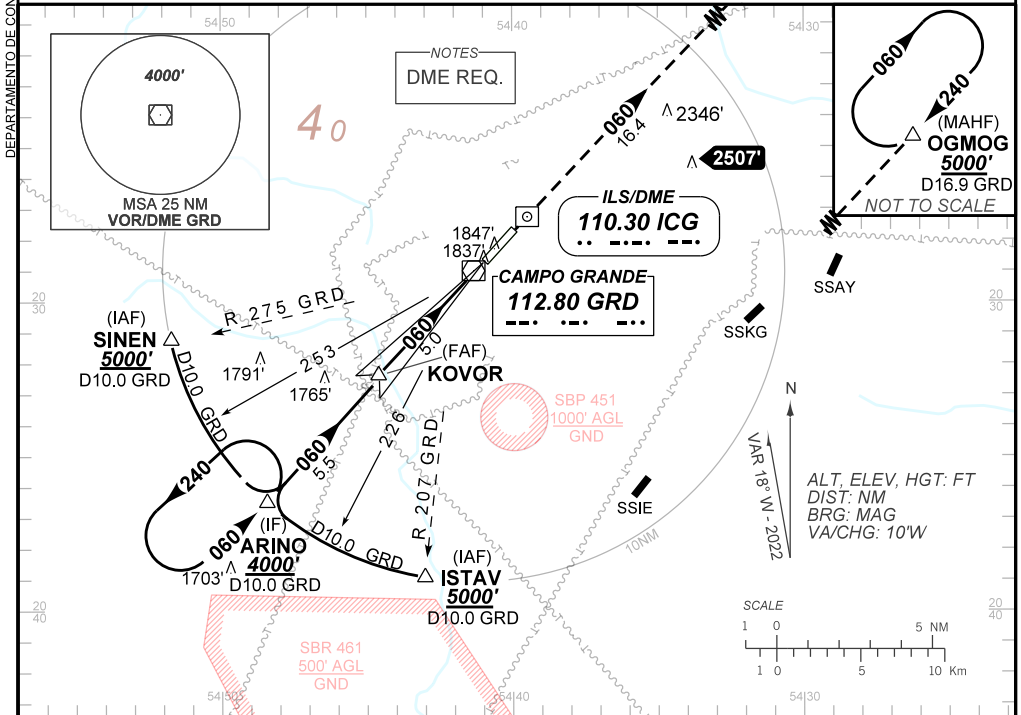
AD ELEV: 1834'

**USO EXCLUSIVO ACFT MILITARES
MILITARY ACFT ONLY**

ILS For LOC F RWY 06

D-ATIS 127.60	APP CAMPO GRANDE 119.35 119.65 120.20 121.00			TWR CAMPO GRANDE 118.10	GNDCL CAMPO GRANDE 121.90
LOC ICG 110.30 MHz	FINAL CRS 060°	FAF: 3450'	CAT I DA / (OCH): REFER TO MNM		LOC ONLY MDA / (OCH): 2180' / (380')

APCH Perdida: Subir para **5000'**. Manter rumo **060** até OGMOG para espera.
Missed APCH: Climb to **5000'**. Maintain course **060** until OGMOG for holding.



TO THR 06 (NM)	10.5	5.0	1.0	0.0
TO ICG (DME)	12.1	6.6	2.6	1.6

	KOVOR	4.0	3.0	2.0	1.0	RWY06	Ground Speed (KT)	090	110	130	150	170	190
	3450	3131	2812	2494	2180	ALT	FPM	500	600	700	800	900	1000
	1647	1328	1009	691	380	(HGT)	FAF-MAPT	NA					

STRAIGHT-IN	CAT	A	B	C	D	E
	DA / (OCH)	2003' / (200')				2115' / (312')
LOC ONLY	ALS/NO ALS/ RVR ALS (m)	1200 / 1200 / 1100				1200 / 1400 / 1100
	MDA / (OCH)	2180' / (380')				
CIRCLING	ALS/NO ALS/ RVR ALS (m)	1200 / 1600 / 1100		1300 / 1700 / 1100		
	MDA / (OCH)	NA				
	VIS (m)					

CHANGES: NEW CHART.

AMDT 2202C 24 FEB 22

USO EXCLUSIVO ACFT MILITARES / MILITARY ACFT ONLY

**SBCG_IAC_01E 1/1
IAC ILS F or LOC F RWY 06**