

**INSTRUMENT APPROACH
CHART (IAC)**

TEFÉ / Prefeito Orlando Marinho (SBTF)

RNP Y RWY 33

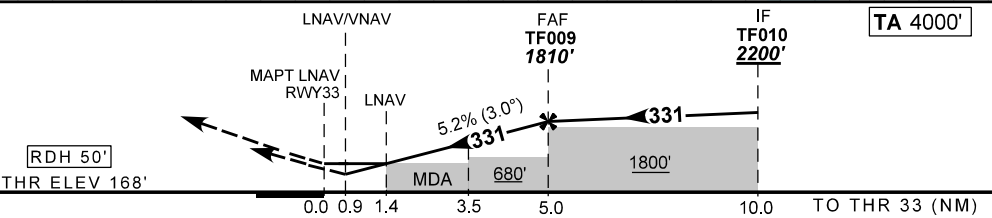
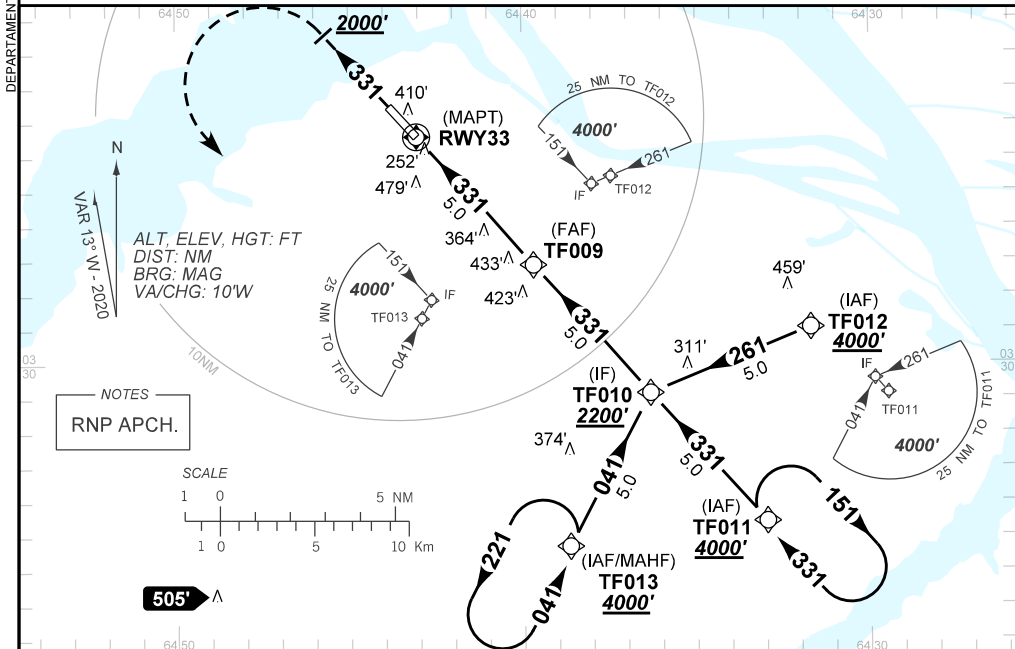
AD ELEV: 186'

CAT (A,B,C)

ATIS NIL	APP NIL	AFIS TEFÉ 125.60	GNDC NIL
TEMP LNAV/VNAV MIN 0°C / MAX 50°C	FINAL CRS 331°	FAF: 1810'	LNAV/VNAV DA / (OCH): 493' / (325')
		LNAV	LNAV MDA / (OCH): 660' / (500')

APCH Perdida: Subir para **4000'**. Manter o rumo **331** até passar **2000'**. Então, curvar à **ESQUERDA** direto TF013 para espera.

Missed APCH: Climb to **4000'**. Maintain course **331** until **2000'**. Then, turn **LEFT** direct TF013 for holding.



RWY33	1.4	2.0	3.0	3.5	4.0	TF009	Ground Speed (KT)	090	110	130	150	170	190
ALT	660	855	1173	1325	1492	1810	FPM	500	600	700	800	NA	NA
(HGT)	500	687	1005	1157	1324	1642	FAF-MAPT	NA					

STRAIGHT-IN	CAT	A	B	C	D	E
	DA / (OCH)	493' / (325')			NA	
LVAV/VNAV	ALS/NO ALS/ RVR ALS (m)	NIL / 1500 / NIL			NA	
	MDA / (OCH)	660' / (500')			NA	
LVAV	ALS/NO ALS/ RVR ALS (m)	NIL / 1600 / NIL		NIL / 2300 / NIL		NA
	MDA / (OCH)	NA				
CIRCLING	MDA / (OCH)	NA				
	VIS (m)	NA				