

**INSTRUMENT APPROACH  
CHART (IAC)**

**GUAJARÁ-MIRIM / Guajará-Mirim (SBGM)**

**RNP RWY 17**

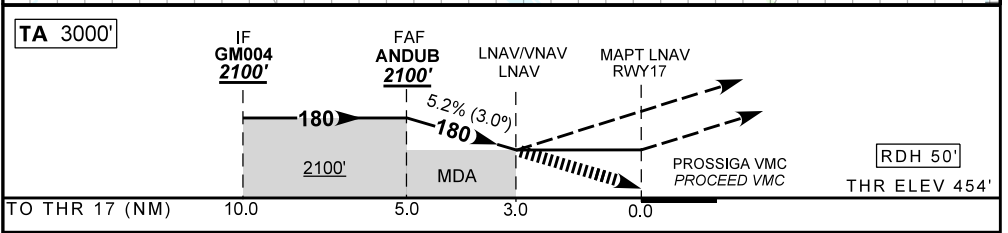
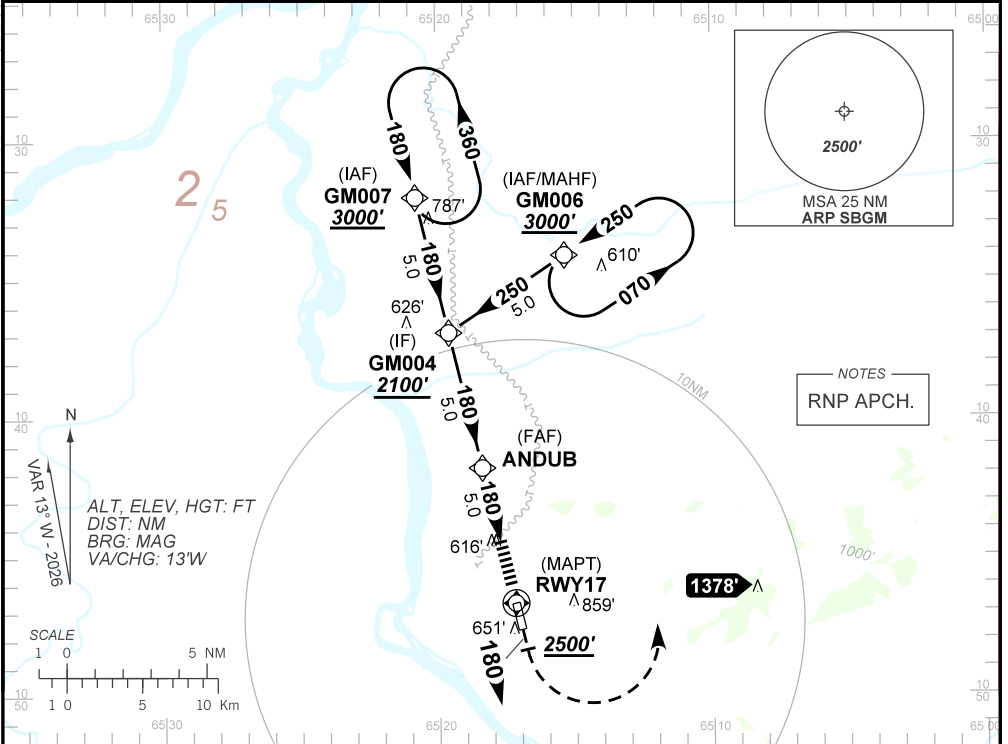
**AD ELEV: 479'**

ATIS NIL		APP NIL		AFIS GUAJARÁ-MIRIM 125.90		GNDC NIL	
TEMP LNAV/VNAV MIN 0°C / MAX 50°C		FINAL CRS 180°		FAF: 2100'		LNAV/VNAV DA / (OCH): 1454' / (1000')	
						LNAV DA / (OCH): 1460' / (1010')	

APCH Perdida: Subir para **3000'**. Manter rumo **180°** até **2500'**. Após, curvar à ESQUERDA direto GM006 para espera.

Missed APCH: Climb to **3000'**. Maintain course **180°** until **2500'**. After, turn LEFT direct GM006 for holding.

DEPARTAMENTO DE CONTROLE DO ESPAÇO AÉREO



TO THR 17 (NM)	10.0	5.0	3.0	0.0								
		ANDUB	4.0	3.0	RWY17	Ground Speed (KT)	090	110	130	150	170	190
		2100	1778	1460	ALT	FPM	500	600	700	800	170	NA
		1646	1324	1010	(HGT)	FAF-MAPT						NA

STRAIGHT-IN	CAT	A	B	C	D	E
	DA / (OCH)	1454' / (1000')				
LNAV/VNAV	ALS/NO ALS/ RVR ALS (m)	NIL / 5000 / NIL				
	MDA / (OCH)	1460' / (1010')				
LNAV	ALS/NO ALS/RVR ALS (m)	NIL / 5000 / NIL				
	MDA / (OCH)	NA				
CIRCLING	VIS (m)	NA				

CHANGES: NEW CHART.