

INSTRUMENT APPROACH **GUARANTÁ DO NORTE / Campo de Provas Brig. Veloso (CPBV), MIL (SBCC)**
CHART (IAC)

**USO EXCLUSIVO ACFT MILITARES
 MILITARY ACFT ONLY**

PAR RWY 12
 (CAT A, B, C)

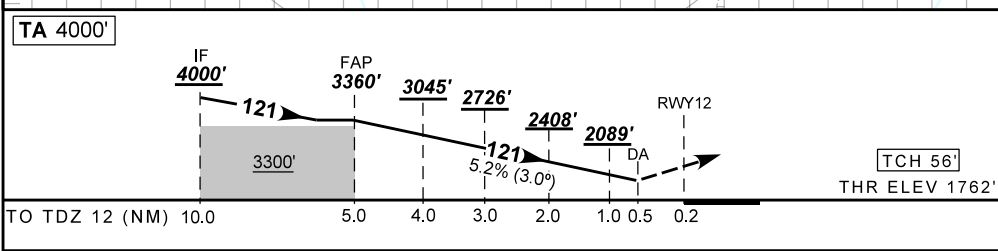
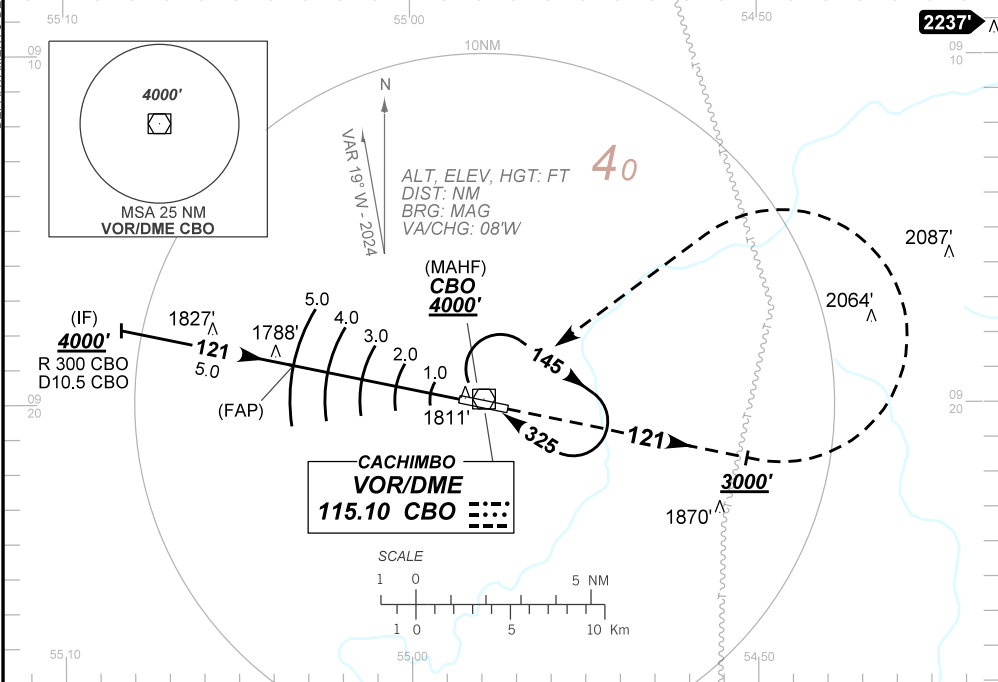
AD ELEV: 1777'

| | | | | |
|--------------|-------------------|---|-----------------------------------|-------------|
| AT/IS NIL | APP NIL | PAR VHF G34 G35 G37 UHF G130 G131 G132 G133 | AFIS CACHIMBO 125.90 | GNDC NIL |
| NIL | FINAL CRS 121° | FAP: 3360' | PAR DA / (OCH): 1962' / (200') | N/A |

APCH Perdida: Subir para **4000'**. Manter o rumo **121** até **3000'**. Após, curva à ESQUERDA direto VOR CBO para espera.

Missed APCH: Climb to **4000'**. Maintain course **121** until **3000'**. After, turn LEFT direct CBO VOR for holding.

DEPARTAMENTO DE CONTROLE DO ESPAÇO AÉREO



| | | | | | | | | |
|-----|-------|-------------------|-----|-----|-----|-----|-----|-----|
| NIL | TDZ12 | Ground Speed (KT) | 090 | 110 | 130 | 150 | 170 | 190 |
| NIL | ALT | FPM | 500 | 600 | 700 | 800 | NA | |
| NIL | (HGT) | FAF-MAPT | NA | | | | | |

| | | | | | | |
|-------------|-------------------------|------------------|---|---|----|---|
| STRAIGHT-IN | CAT | A | B | C | D | E |
| PAR | DA / (OCH) | 1962' / (200') | | | NA | |
| | ALS/NO ALS/ RVR ALS (m) | NIL / 1200 / NIL | | | NA | |
| CIRCLING | MDA / (OCH) | NA | | | | |
| | VIS (m) | NA | | | | |

CHANGES: HDG.

AIRAC AMDT 2412A1 28 NOV 24

USO EXCLUSIVO ACFT MILITARES / MILITARY ACFT ONLY

**SBCC_IAC_00L 1/1
 IAC PAR RWY 12**