

**INSTRUMENT APPROACH  
CHART (IAC)**

**SANTA MARIA / Santa Maria (SBSM)**

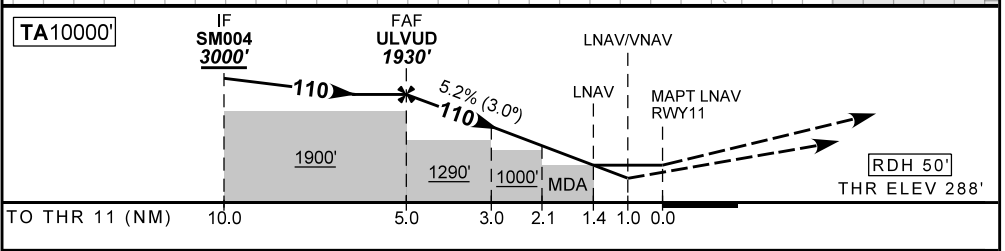
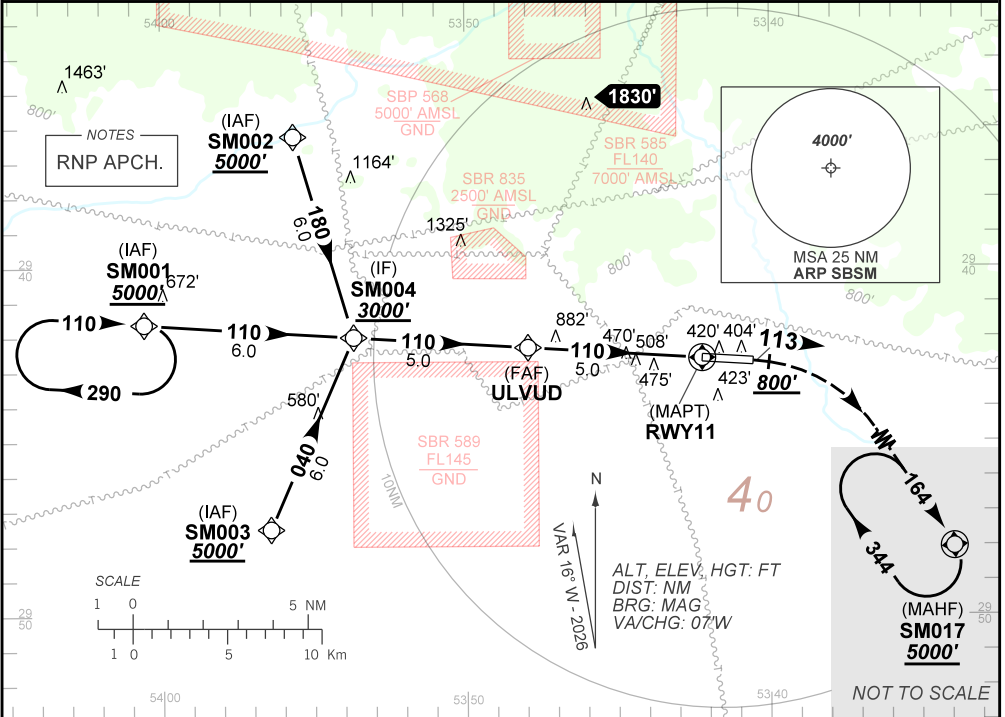
**RNP RWY 11**

**AD ELEV: 289'**

<b>ATIS</b> 127.75	<b>APP SANTA MARIA</b> 118.30 119.35 121.35	<b>TWR SANTA MARIA</b> 118.30 118.85	<b>GNDC</b> NIL
<b>TEMP LNAV/VNAV</b> MIN -20°C / MAX 50°C	<b>FINAL CRS</b> 110°	<b>FAF:</b> 1930'	<b>LNAV / VNAV</b> DA / (OCH): 655' / (367')
		<b>LNAV</b>	<b>LNAV</b> MDA / (OCH): 760' / (480')

APCH Perdida: Subir para **5000'**. Manter proa **113** até **800'**. Após, curvar à DIREITA direto SM017 para espera.  
Missed APCH: Climb to **5000'**. Maintain heading **113** until **800'**. After, turn RIGHT direct SM017 for holding.

DEPARTAMENTO DE CONTROLE DO ESPAÇO AEREO



ULVUD	4.0	3.0	2.1	1.4	RWY11	Ground Speed (KT)	090	110	130	150	170	190
	1930	1612	1293	1007	760		ALT	FPM	500	600	700	800
	1642	1324	1005	719	480	(HGT)	FAF-MAPT	NA				

STRAIGHT-IN	CAT	A	B	C	D	E
	LNAV/VNAV	DA / (OCH) 655' / (367')				NA
LNAV	ALS/NO ALS/RVR ALS (m)	1000 / 1700 / 1000				
	MDA / (OCH)	760' / (480')				
CIRCLING	ALS/NO ALS/RVR ALS (m)	1000 / 1700 / 1000		1500 / 2200 / 1400		
	MDA / (OCH)	NA				
	VIS (m)					

CHANGES: EREQ. OBST. PROC. TA. VAR