

**INSTRUMENT APPROACH
CHART (IAC)**

**CURITIBA / Bacacheri (SBBJ)
NDB B RWY 18/36
CAT(A,B)**

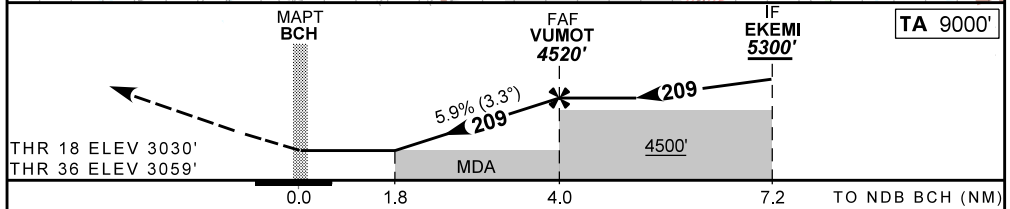
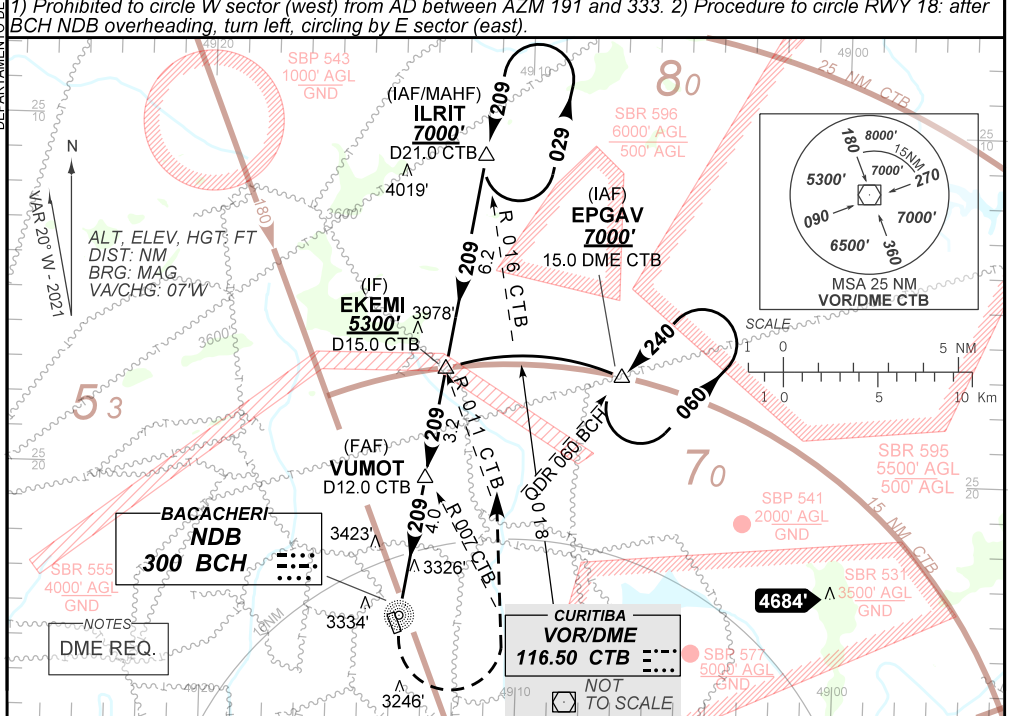
AD ELEV: 3059'

ATIS 132.325	APP CURITIBA 119.95 120.65 120.95 129.55 133.15	TWR BACACHERI 118.90	AFIS BACACHERI 118.90 119.95	GNDC BACACHERI 121.80
NDB BCH 300 KHz	FINAL CRS 209°	FAF 4520'	N/A	N/A

APCH Perdida: Subir para **7000'** curvando à ESQUERDA para interceptar a RDL **016** VOR CTB até ILRIT para espera.
Missed APCH: Climb to **7000'**, turn **LEFT** to intercept **016** RDL CTB VOR until ILRIT for holding.

RMK: 1) Proibido circular setor W (oeste) do AD entre os AZM 191 e 333. 2) Procedimento para circular RWY 18: após bloqueio do NDB BCH, curvar à esquerda, circular pelo setor E (leste).
1) Prohibited to circle W sector (west) from AD between AZM 191 and 333. 2) Procedure to circle RWY 18: after BCH NDB overheading, turn left, circling by E sector (east).

DEPARTAMENTO DE CONTROLE DO ESPAÇO AÉREO



MAPT	1.8	2.0	3.0	VUMOT					
ALT	3720	3810	4160	4520					
(HGT)	670	751	1101	1461					
Ground Speed (KT)	090	110	130	150	170	190			
FPM	550	650	800	900					
FAF-MAPT	NA								

STRAIGHT-IN	CAT	A	B	C	D	E
NDB	MDA / (OCH)					
	ALS/NO ALS/ RVR ALS (m)					
CIRCLING	MDA / (OCH)	3650' / (600')	3720' / (670')			
	VIS (m)	1600	1600			

CHANGES: EAC.