

**INSTRUMENT APPROACH CHART (IAC)**

**CURITIBA / Afonso Pena, INTL (SBCT)**

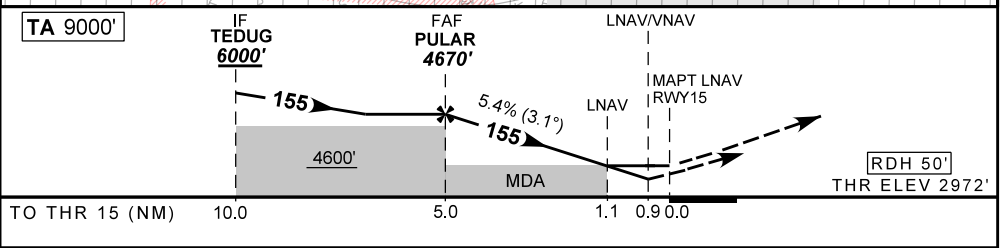
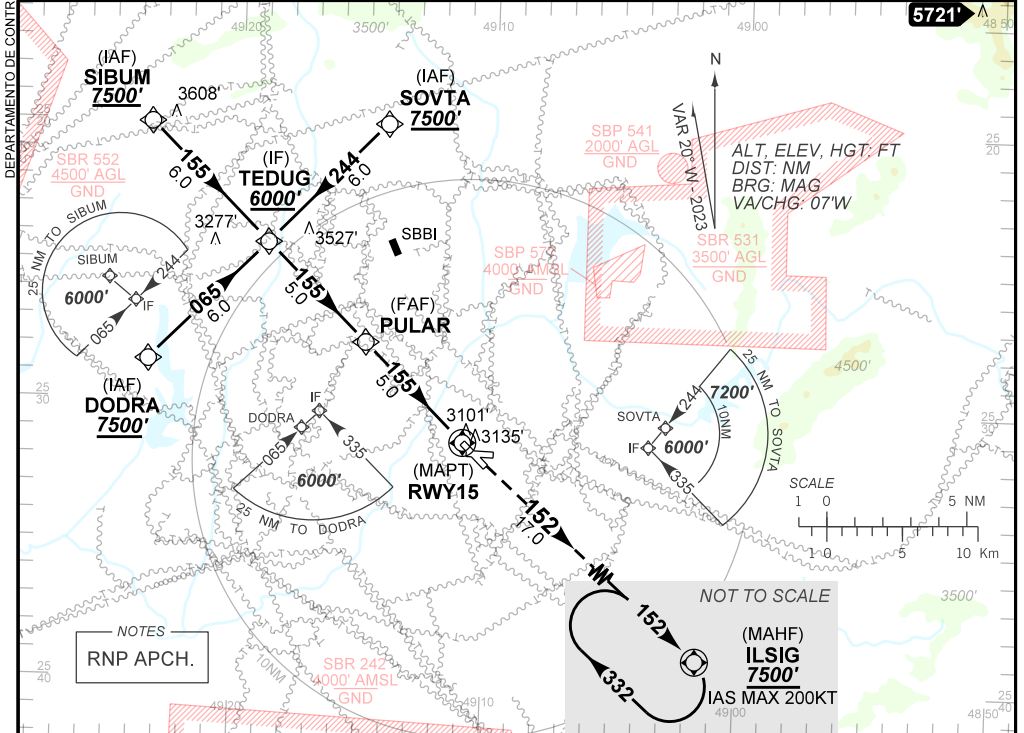
**AD ELEV: 2989'**

**RNP Z RWY 15**

D-ATIS <b>127.80</b>	APP CURITIBA <b>119.95 119.70 120.65 120.95 129.55 133.15</b>	TWR CURITIBA <b>118.15</b>	GND C CURITIBA <b>121.90</b>
TEMP LNAV/VNAV <b>MIN -10°C / MAX 45°C</b>	FINAL CRS <b>155°</b>	FAF: <b>4670'</b>	LNAV/VNAV <b>DA / (OCH): 3303' / (331')</b>
		MDA / (OCH): <b>3390' / (420')</b>	

APCH Perdida: 1) Subir para **7500'** Manter rumo **152°** até ILSIG para espera.

Missed Approach: 1) Climb to **7500'**. Maintain course **152°** until ILSIG for holding.



	PULAR	4.0	3.0	2.0	1.1	RWY15	Ground Speed (KT)	090	110	130	150	170	190
	4670	4338	4009	3680	3390	ALT	FPM	500	600	700	800	900	NA
	1698	1366	1037	708	420	(HGT)	FAF-MAPT	NA					

STRAIGHT-IN	CAT	A	B	C	D	E
LNAV/VNAV	DA / (OCH)	3303' / (331')				NA
	ALS/NO ALS/ RVR ALS (m)	800 / 1500 / 750				
LNAV	MDA / (OCH)	3390' / (420')				
	ALS/NO ALS/ RVR ALS (m)	800 / 1600 / 750		1200 / 1900 / 1100		
CIRCLING	MDA / (OCH)	NA				
	VIS (m)	NA				