

**INSTRUMENT APPROACH
CHART (IAC)**

JAGUARUNA / Regional Sul (SBJA)

AD ELEV: 115'

RNP RWY 23

ATIS NIL	AFIS JAGUARUNA 130.70	TWR NIL	GNDC NIL
-------------	--------------------------	------------	-------------

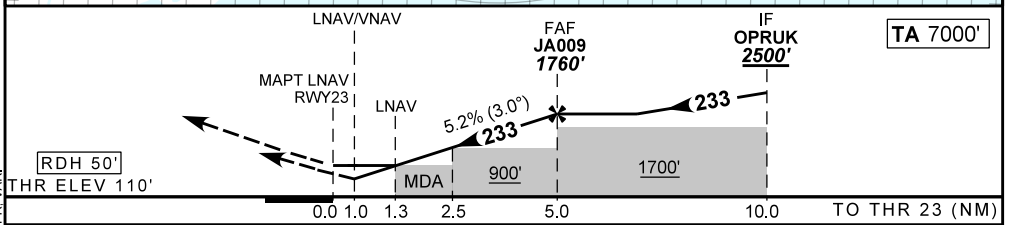
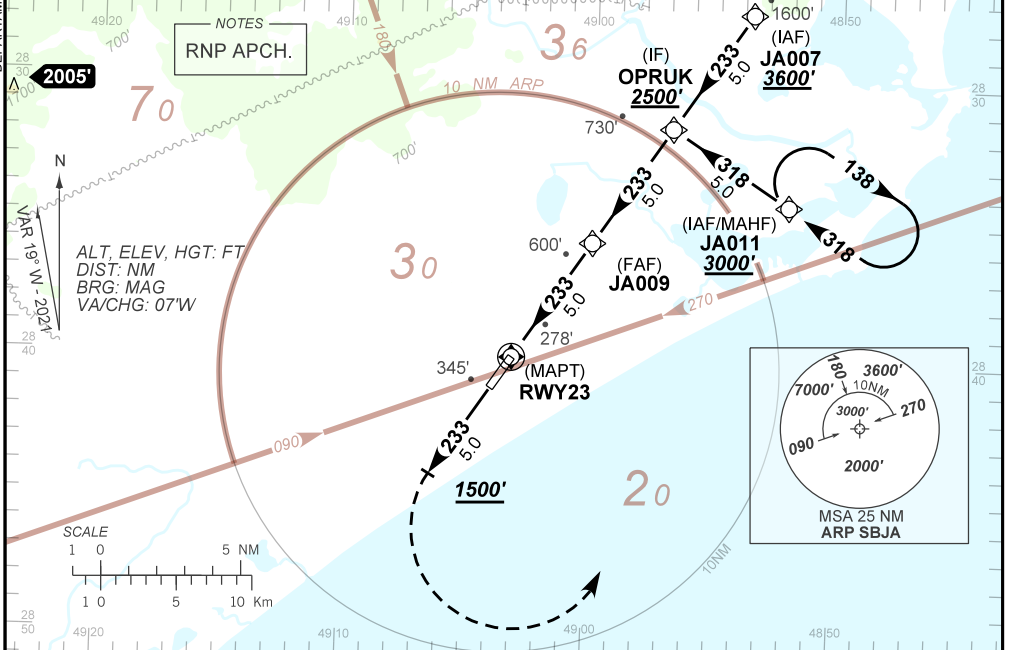
TEMP LNAV/VNAV MIN -10°C / MAX 50°C	FINAL CRS 233°	FAF: 1760'	LNAV/VNAV DA / (OCH): REFER TO MNM	LNAV MDA / (OCH): 580' / (470')
---	-------------------	---------------	--	---

APCH Perdida: Subir para **3000'**. Manter rumo **233** até **1500'**. Após, curvar à ESQUERDA para espera em JA011.

Missed APCH: Climb to **3000'**. Maintain course **233** until **1500'**. After, turn LEFT to JA011 for holding.

RMK: 1) IAS MAX 230 KT entre JA011 e OPRUK. 2) Proibido para circular pelo setor W. 3) ACFT procedente do setor W coordenar com Rádio Criciúma em 131.95.

1) IAS MAX 230 KT BTN JA011 and OPRUK. 2) Prohibited circling through W sector. 3) ACFT from W sector coordinate with Criciúma Radio on frequency 131.95.



RWY23	1.0	1.3	2.5	3.0	4.0	JA009	Ground Speed (KT)	090	110	130	150	170	190
ALT	482	580	955	1116	1434	1760	FPM	500	600	700	800	900	NA
(HGT)	380		845	1006	1324	1650	FAF-MAPT	NA					

STRAIGHT-IN	CAT	A	B	C	D	E
	DA / (OCH)	482' / (380')		501' / (400')		
LNAV/VNAV	ALS/NO ALS/ RVR ALS (m)	NIL / 1700 / NIL		NIL / 1800 / NIL		
	MDA / (OCH)	580' / (470')				
LNAV	ALS/NO ALS/ RVR ALS (m)	NIL / 1700 / NIL		NIL / 2200 / NIL		
	MDA / (OCH)	NA				
CIRCLING	MDA / (OCH)	NA				
	VIS (m)	NA				

DEPARTAMENTO DE CONTROLE DO ESPAÇO AÉREO

CHANGES: IDENT, HDG, LAYOUT, MNM, OPR, VAR.