

**INSTRUMENT APPROACH
CHART (IAC)**

PONTA GROSSA / Comandante Antônio Amilton Beraldo (SBPG)

AD ELEV: 2589'

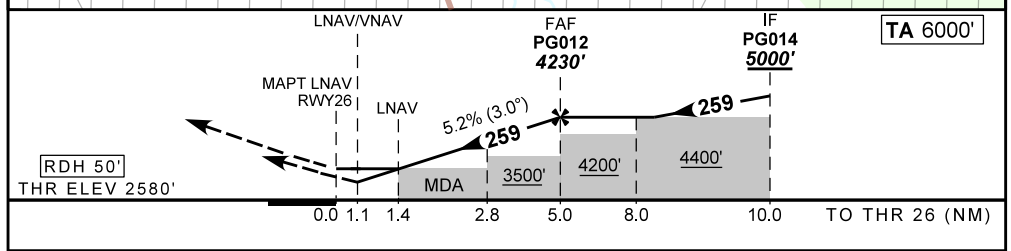
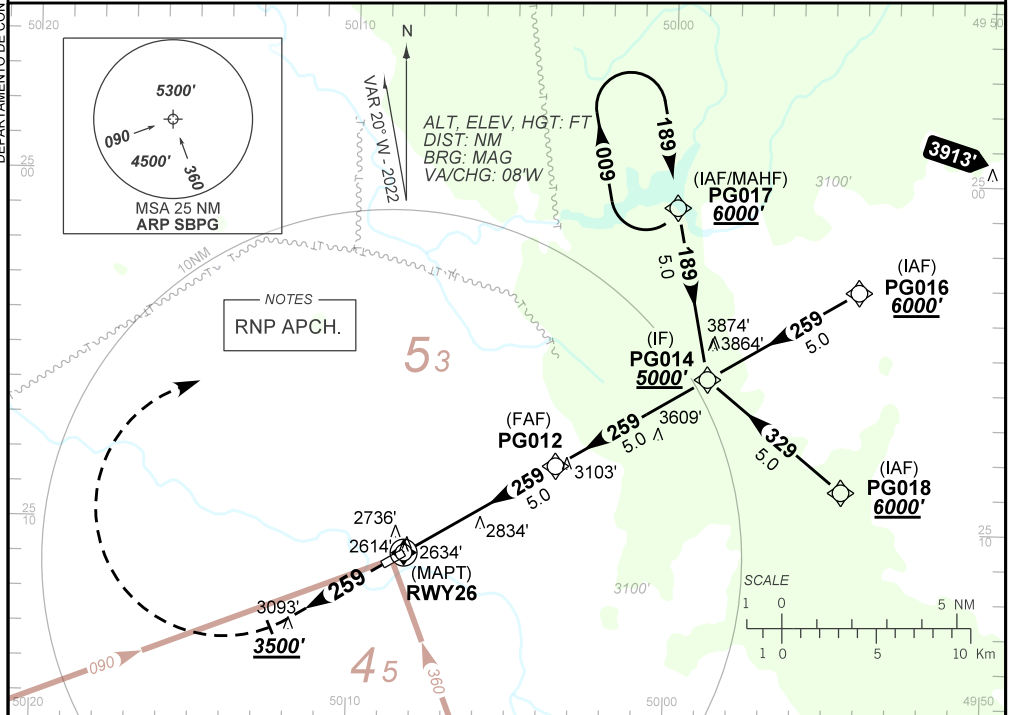
RNP RWY 26

ATIS NIL	ACC CURITIBA 125.80 127.20 132.45	AFIS 128.10	TWR NIL	GNDC NIL
--------------------	---	-----------------------	-------------------	--------------------

TEMP LNAV/VNAV MIN -10°C / MAX 55°C	FINAL CRS 259°	FAF: 4230'	LNAV/VNAV DA / (OCH): 2966' / (386')	LNAV MDA / (OCH): 3090' / (510')
---	--------------------------	----------------------	--	--

APCH Perdida: Subir para **6000'**. Manter rumo **259** até **3500'**. Após, curvar à DIREITA, direto PG017 para espera.
Missed APCH: Climb to **6000'**. Maintain course **259** until **3500'**. After, turn RIGHT direct PG017 for holding.

DEPARTAMENTO DE CONTROLE DO ESPAÇO AÉREO



RWY26	1.4	2.8	3.0	4.0	PG012		Ground Speed (KT)	090	110	130	150	170	190
ALT	3090	3522	3585	3904	4230		FPM	500	600	700	800		N/A
(HGT)	510	942	1005	1324	1650		FAF-MAPT	NIL					

STRAIGHT-IN	CAT	A	B	C	D	E	
	DA / (OCH)	2966' / (386')					NA
LNAV/VNAV	ALS/NO ALS/ RVR ALS (m)	NIL / 1600 / NIL					
	MDA / (OCH)	3090' / (510')					
LNAV	ALS/NO ALS/ RVR ALS (m)	NIL / 1600 / NIL			NIL / 2400 / NIL		
	CIRCLING	MDA / (OCH)	NA				
		VIS (m)					