

**INSTRUMENT APPROACH
CHART (IAC)**

BRASÍLIA / Pres. Juscelino Kubitschek, INTL (SBBR)

AD ELEV: 3498'

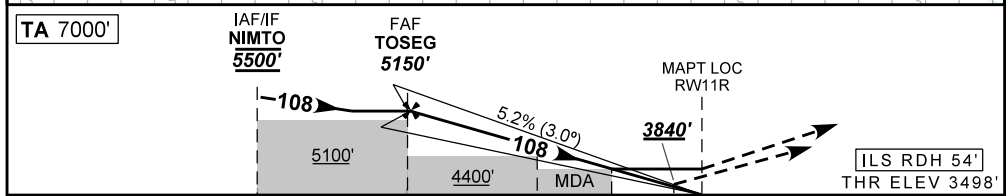
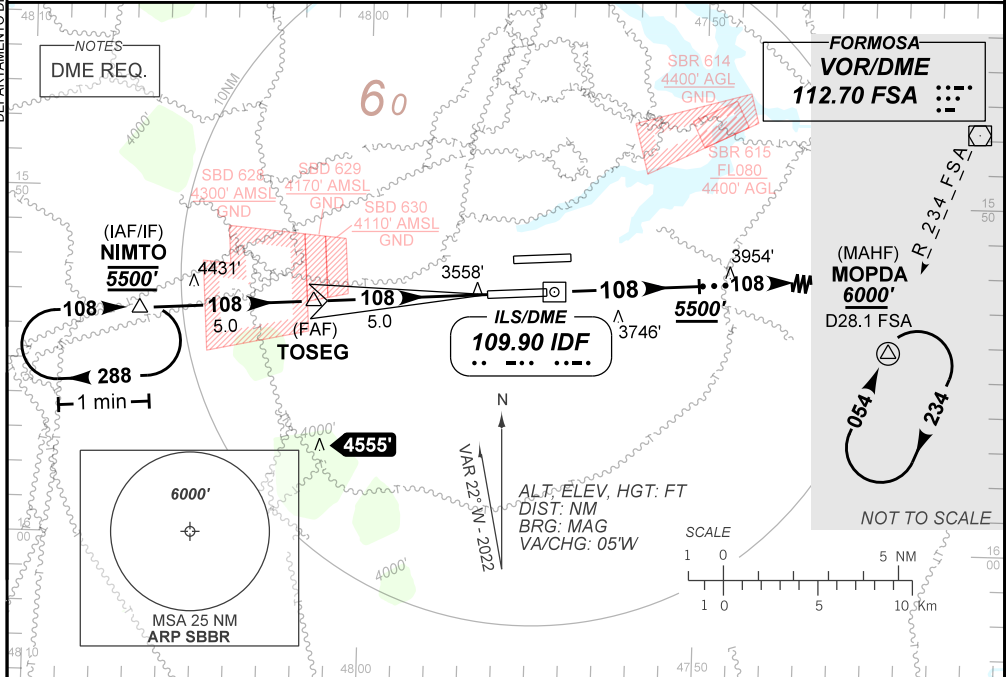
ILS T or LOC T RWY 11R

D-ATIS 127.80		APP BRASÍLIA 120.65 129.15 129.60 119.50			TWR BRASÍLIA 118.10 118.45 118.75		GNDC BRASÍLIA 121.80 121.95		
ILS/DME IDF 109.90 MHz		FINAL CRS 108°		FAF: 5150'		CAT I		LOC	
				DA / (OCH): 3840' / (342')		MDA / (OCH): 3880' / (390')			

APCH Perdida: Subir para **6000'**. Manter proa **108** até **5500'**, gradiente 5%. Aguardar vetorização radar para interceptar RDL **234** do VOR FSA para espera em MOPDA.

Missed APCH: Climb to **6000'**. Maintain heading **108** up to **5500'**, gradient 5%. Wait for radar vectoring to intercept **234** RDL FSA VOR for holding on MOPDA.

DEPARTAMENTO DE CONTROLE DO ESPAÇO AÉREO



TO THR 11R (NM)	10.0	5.0	2.7	1.1	0.9	0.0
TO IDF (DME)	11.9	6.9	4.6	3.0	2.8	1.9

TOSEG	4.0	3.0	2.7	2.0	1.1	RWY11R	Ground Speed (KT)	090	110	130	150	170	190
5150	4826	4507	4411	4189	3880	ALT	FPM	500	600	700	800	900	1000
1652	1328	1009	913	691	390	(HGT)	FAF-MAPT	NA					

STRAIGHT-IN	CAT	A	B	C	D	E
	DA / (OCH)	3840' / (342')				
CAT I	ALS/NO ALS/ RVR ALS (m)	900 / 1600 / 850				
	MDA / (OCH)	3880' / (390')				
LOC	ALS/NO ALS/ RVR ALS (m)	900 / 1600 / 850		1100 / 1800 / 1000		
	MDA / (OCH)	NA				
CIRCLING	VIS (m)	NA				

CHANGES: EAC, FAF, LAYOUT, MINM OFR.