

**INSTRUMENT APPROACH  
CHART (IAC)**

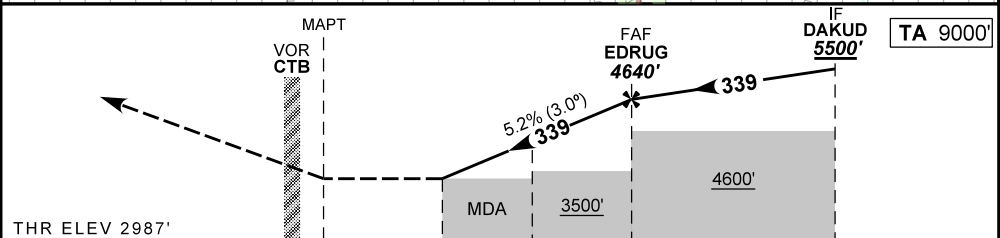
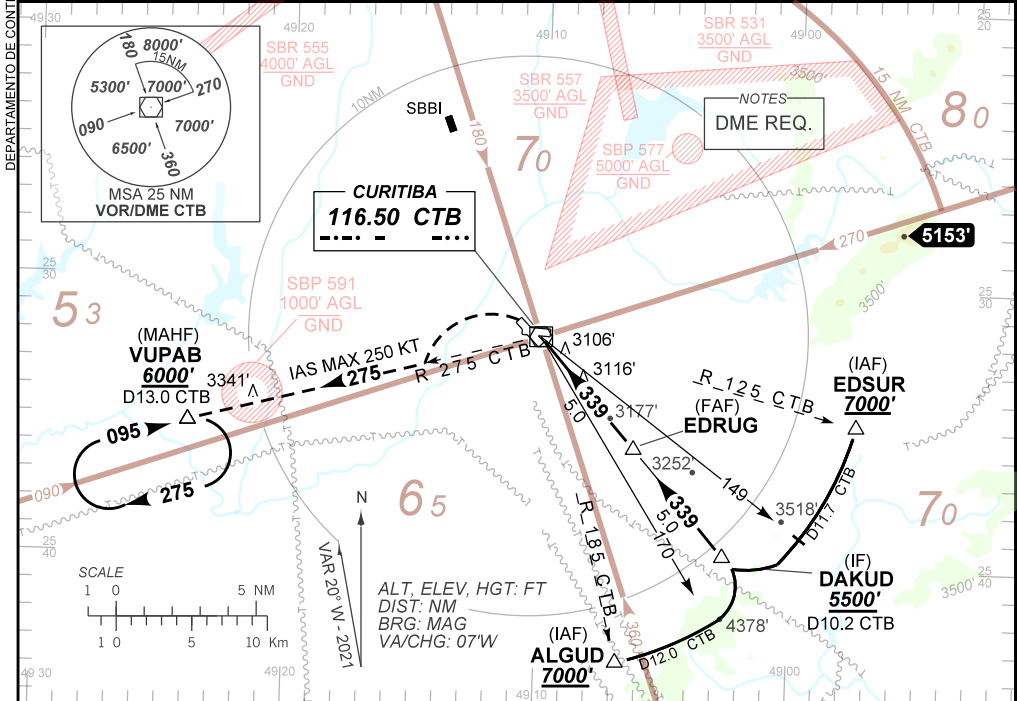
**CURITIBA / Afonso Pena, INTL (SBCT)**

**AD ELEV: 2989'**

**VOR Y RWY 33**

D-ATIS <b>127.80</b>	APP CURITIBA <b>119.70 119.95 120.65 120.95 129.55 133.15</b>					TWR CURITIBA <b>118.15</b>	GNDC CURITIBA <b>121.90</b>
VOR CTB <b>116.50 MHz</b>	FINAL CRS <b>339°</b>	FAF: <b>4640'</b>	N/A		VOR MDA / (OCH): <b>3400' / (420')</b>		

APCH Perdida: Subir para **6000'**, em curva à ESQUERDA RDL **275°** CTB para espera em VUPAB.  
Missed APCH: Climbing LEFT turn to **6000'** to intercept **275°** CTB RDL for holding at VUPAB.



THR ELEV 2987'													
TO THR 33 (NM)	0.0	1.2	2.6	5.0	10.0								
TO CTB (DME)	0.2	1.4	2.8	5.2	10.2								
RWY33	1.2	2.0	2.6	3.0	4.0	EDRUG	Ground Speed (KT)						
ALT	3400	3674	3873	3992	4311	4640	090	110	130	150	170	190	
(HGT)	420	687	886	1005	1324	1653	FPM	500	600	700	800	900	NA
							FAF-MAPT	NA					

STRAIGHT-IN	CAT	A	B	C	D	E
VOR	MDA / (OCH)	3400' / (420')				NA
	ALS / NO ALS / RVR ALS (m)	NIL / 1600 / NIL		NIL / 1900 / NIL		
CIRCLING	MDA / (OCH)	NA				NA
	VIS (m)					

CHANGES: ALT. LAYOUT.