

**INSTRUMENT APPROACH GUARANTÁ DO NORTE / Campo de Provas Brig. Veloso (CPBV), MIL (SBCC)
CHART (IAC)**

**USO EXCLUSIVO ACFT MILITARES
MILITARY ACFT ONLY**

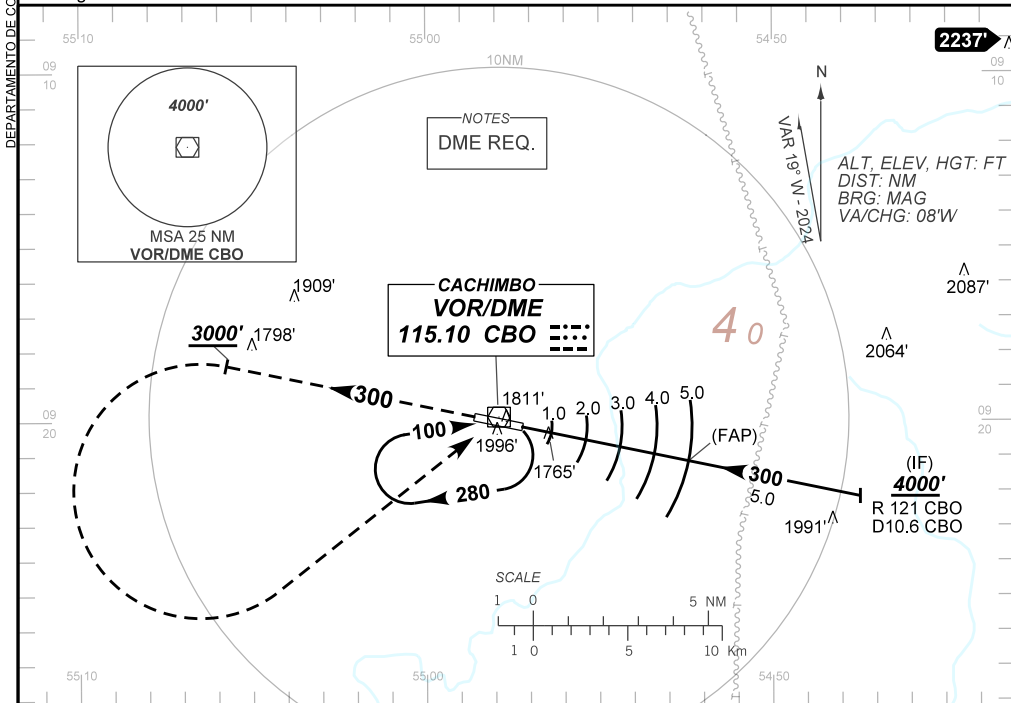
PAR RWY 30
(CAT A, B, C)

AD ELEV: 1777'

ATIS NIL	APP NIL	PAR VHF G34 G35 G37 UHF G130 G131 G132 G133		AFIS CACHIMBO 125.90	GNDC NIL
N/A	FINAL CRS 300°	FAP: 3370'	PAR DA / (OCH): 1970' / (200')	N/A	

APCH Perdida: Subir para **4000'**. Manter o rumo **300** até **3000'**. Após, curva à ESQUERDA direto VOR CBO para espera.

Missed APCH: Climb to **4000'**. Maintain course **300** until **3000'**. Then, turn LEFT direct CBO VOR for holding.



TA 4000'

RWY30 **2088'** **2407'** **2725'** **3044'** FAP **3370'** IF **4000'**

THR ELEV 1770'

TCH 51'

300°

5.2% (3.0°)

3300'

0.2 0.6 1.0 2.0 3.0 4.0 5.0 10.0 TO TDZ 30 (NM)

NIL	TDZ30	Ground Speed (KT)	090	110	130	150	170	190
NIL	ALT	FPM	500	600	700	800	NA	
NIL	(HGT)	FAF-MAPT	NA					

STRAIGHT-IN	CAT	A	B	C	D	E
PAR	DA / (OCH)	1970' / (200')				NA
	ALS/NO ALS/ RVR ALS (m)	NIL / 1200 / NIL				
CIRCLING	MDA / (OCH)	NA				
	VIS (m)	NA				

CHANGES: LAYOUT, MINM OPR, OBST, VAR.

AIRAC AMDT 2410A1 03 OCT 24

USO EXCLUSIVO ACFT MILITARES / MILITARY ACFT ONLY

**SBCC_IAC_00M 1/1
IAC PAR RWY 30**