

INSTRUMENT APPROACH
CHART (IAC)

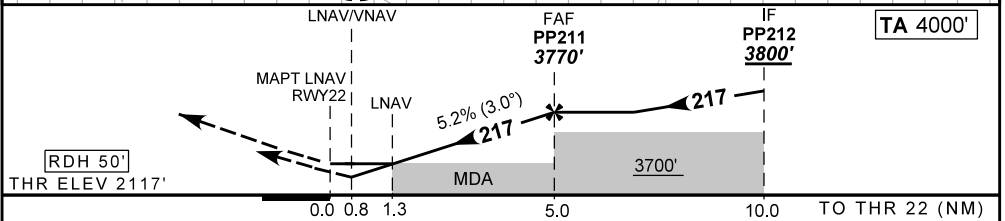
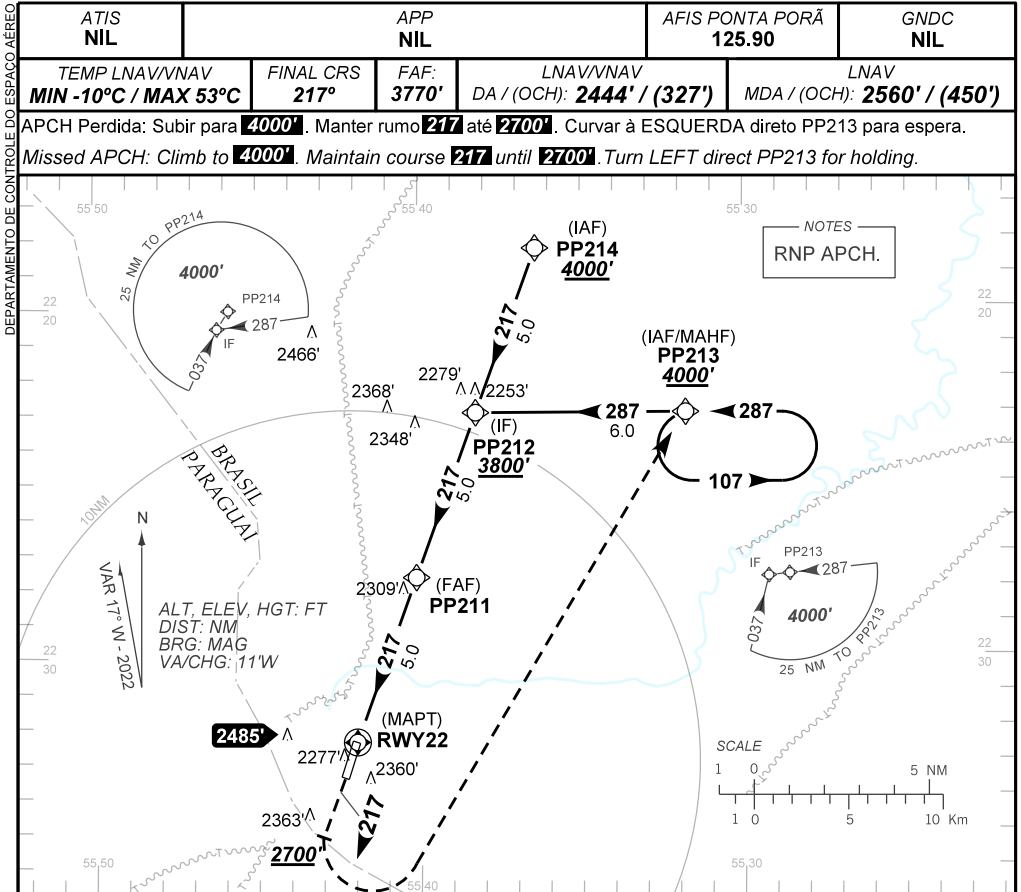
PONTA PORÃ / Ponta Porã, INTL (SBPP)

AD ELEV: 2156'

RNP RWY 22

ATIS NIL	APP NIL	AFIS PONTA PORÃ 125.90	GND C NIL
TEMP LNAV/VNAV MIN -10°C / MAX 53°C	FINAL CRS 217°	FAF: 3770'	LNAV MDA / (OCH): 2560' / (450')
LNAV/VNAV DA / (OCH): 2444' / (327')			

APCH Perdida: Subir para **4000'**. Manter rumo **217** até **2700'**. Curvar à ESQUERDA direto PP213 para espera.
Missed APCH: Climb to **4000'**. Maintain course **217** until **2700'**. Turn LEFT direct PP213 for holding.



RWY22	1.3	2.0	3.0	4.0	PP211		Ground Speed (KT)	090	110	130	150	170	190
ALT	2560	2804	3122	3441	3770		FPM	500	600	700	800	900	NA
(HGT)	450	687	1005	1324	1653		FAF-MAPT	NIL					

STRAIGHT-IN	CAT	A	B	C	D	E	
	DA / (OCH)	2444' / (327')					NA
LNAV/VNAV	ALS/NO ALS/ RVR ALS (m)	NIL / 1500 / NIL					
	MDA / (OCH)	2560' / (450')					
LNAV	ALS/NO ALS/ RVR ALS (m)	NIL / 1600 / NIL			NIL / 2100 / NIL		
	MDA / (OCH)	NA					
CIRCLING	MDA / (OCH)	NA					
	VIS (m)	NA					

CHANGES: LAYOUT, MINM OPR.