

**INSTRUMENT APPROACH
CHART (IAC)**

SÃO PAULO / Guarulhos - Gov. André Franco Montoro, INTL (SBGR)

AD ELEV: 2461'

ILS W RWY 28L

D-ATIS 127.75	APP SÃO PAULO 119.15 120.85 122.75 123.25 129.00 129.75	TWR GUARULHOS 118.40 132.75 135.20	GNDC GUARULHOS 121.70 126.90
-------------------------	---	--	--

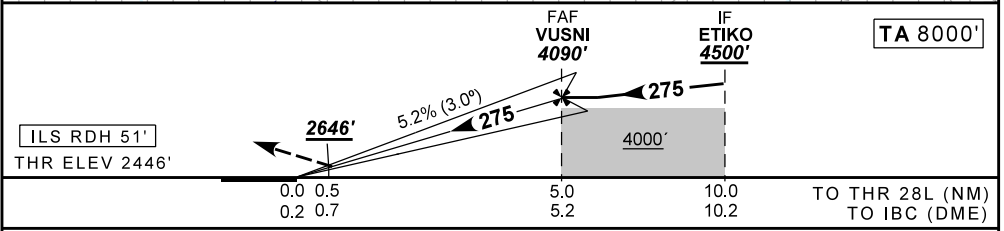
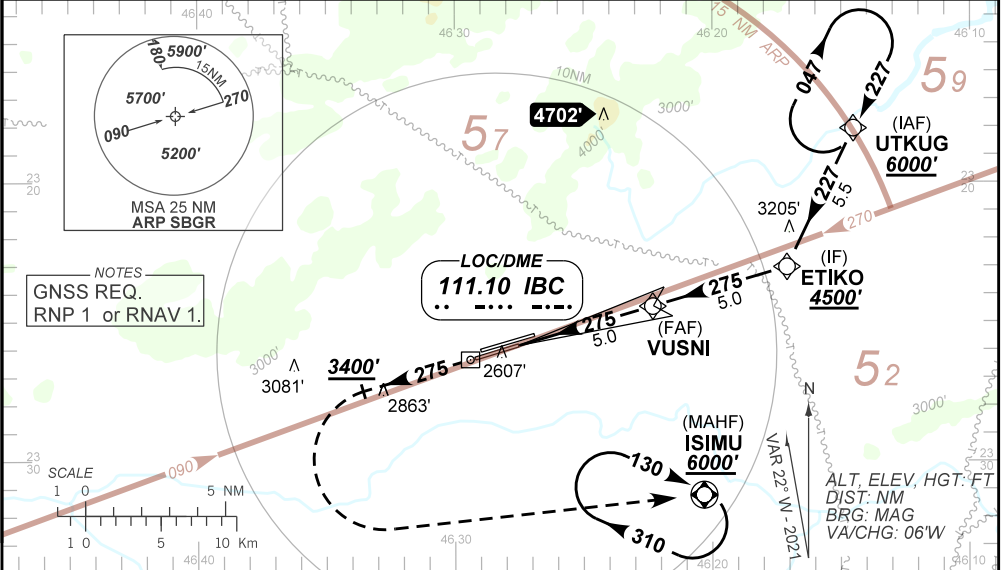
LOC IBC 111.10 MHz	FINAL CRS 275°	FAF: 4090'	CAT I DA / (OCH): 2646' / (200')	N/A
------------------------------	--------------------------	----------------------	--	------------

APCH Perdida: Subir para **6000'**. Manter rumo **275°** até **3400'**. Após, curvar à ESQUERDA direto ISIMU para espera. IAS MAX 230KT.
Missed APCH: Climb to **6000'**. Maintain course **275°** until **3400'**. Then, turn LEFT direct to ISIMU for holding. IAS MAX 230KT.

RMK: (*)VIS RVR ALS 550m para APCH utilizando Diretor de Voo, Piloto Automático ou HUD;
(*) VIS RVR ALS 550m for APCH using a Flight Director, Autopilot or HUD.

ARREMETIDA VISUAL RWY 28R: Subir para **6000'**. Manter proa **275°** até atingir **6000'**. Após, curvar à DIREITA para **085°** e aguardar instruções ATC.
VISUAL GO AROUND RWY 28R: Climb to **6000'**. Maintain heading **275°** until reaching **6000'**. Then, turn RIGHT heading **085°** and expect ATC instructions.

DEPARTAMENTO DE CONTROLE DO ESPAÇO AÉREO



RWY28L	0.5	2.0	3.0	4.0	VUSNI	Ground Speed (KT)	090	110	130	150	170	190
ALT	2646	3133	3452	3770	4090	FPM	500	600	700	800	900	NA
(HGT)	200	687	1006	1324	1644	FAF-MAPT	NA					

STRAIGHT-IN	CAT	A	B	C	D	E
	DA / (OCH)	2646' / (200')				
CAT I	ALS/NO ALS/ RVR ALS (m)	800 / 1200 / 700*				
		NA				
CIRCLING	MDA / (OCH)	NA				
	VIS (m)	NA				

CHANGES: LAYOUT, THR.