

**INSTRUMENT APPROACH  
CHART (IAC)**

**BRASÍLIA / Pres. Juscelino Kubitschek, INTL (SBBR)**

**AD ELEV: 3498'**

**RNP X RWY 11L (AR)**

D-ATIS <b>127.80</b>	APP BRASÍLIA <b>119.70 129.60 119.20 120.00</b>	TWR BRASÍLIA <b>118.10 118.45 118.75</b>	GNDC BRASÍLIA <b>121.80 121.95</b>
-------------------------	--	---	---------------------------------------

TEMP LNAV/VNAV <b>MIN 0°C / MAX 50°C</b>	FINAL CRS <b>108°</b>	FAF: <b>6200'</b>	RNP 0.24 DA / (OCH): <b>3779' / (331')</b>	<b>N/A</b>
---	--------------------------	----------------------	---	------------

APCH Perdida: 1) Subir para **6000'**. Manter rumo **108** até KOTVU subindo para **5300'**. Após, curvar à ESQUERDA no rumo **067** até EDVIV para espera. 2) RNP menor que 1.0 de RWY11L até BR087.

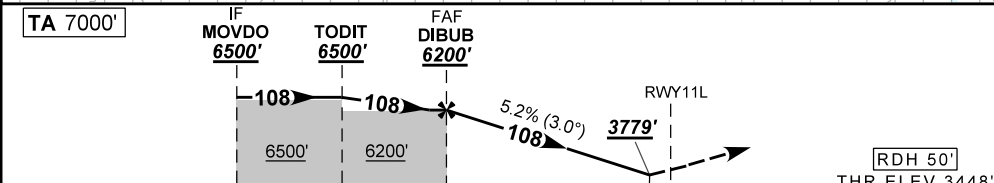
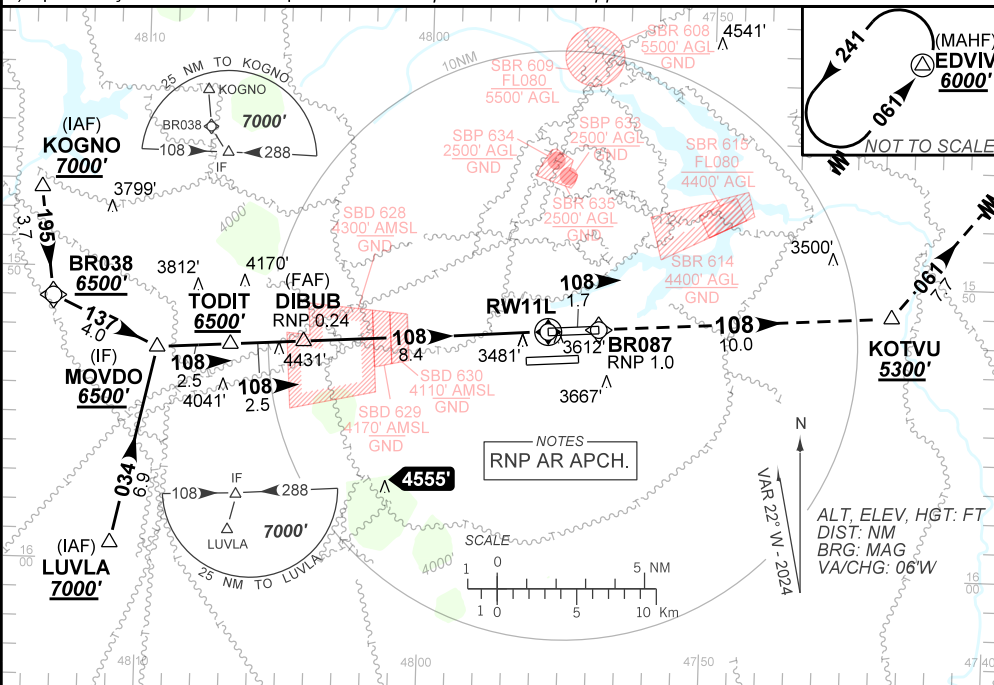
Missed APCH: 1) Climb to **6000'**. Maintain course **108** until KOTVU climbing to **5300'**. After, turn LEFT course **067** until EDVIV for holding. 2) RNP below 1.0 from RWY11L until BR087.

RMK: 1) Não efetuar transição para RNP da aproximação perdida antes de 0.9 NM de RWY 11L.

Do not perform RNP transition of Missed APCH before 0.9 NM from RWY 11L.

2) Aproximações Paralelas Independentes / Independent Parallel Approaches.

DEPARTAMENTO DE CONTROLE DO ESPAÇO AÉREO



TO THR 11L (NM)	13.4	10.9	8.4	0.9	0.0	THR ELEV 3448'
-----------------	------	------	-----	-----	-----	----------------

DIBUB	5.0	4.0	3.0	2.0	0.9	RWY11L	Ground Speed (KT)	090	110	130	150	170	190
6200	5090	4772	4453	4135	3779	(ALT)	FPM	500	600	700	800	900	NA
2752	1642	1324	1005	687	331	(HGT)	FAF-MAPT	NA					

STRAIGHT-IN	CAT	A	B	C	D	E
RNP 0.24	DA / (OCH)	3779' / (331')				NA
	ALS / NO ALS / RVR ALS (m)	800 / 1500 / 750				

**AUTORIZAÇÃO ESPECIAL PARA AERONAVE E TRIPULAÇÃO REQUERIDA  
SPECIAL AUTHORIZATION FOR AIRCRAFT AND CREW REQUIRED**

CHANGES: LAYOUT, PROC. VAR.