

BELO HORIZONTE / Tancredo Neves, INTL (SBCF)
RWY 34

STANDARD DEPARTURE CHART
INSTRUMENT (SID)

RNAV UBSAP 1B

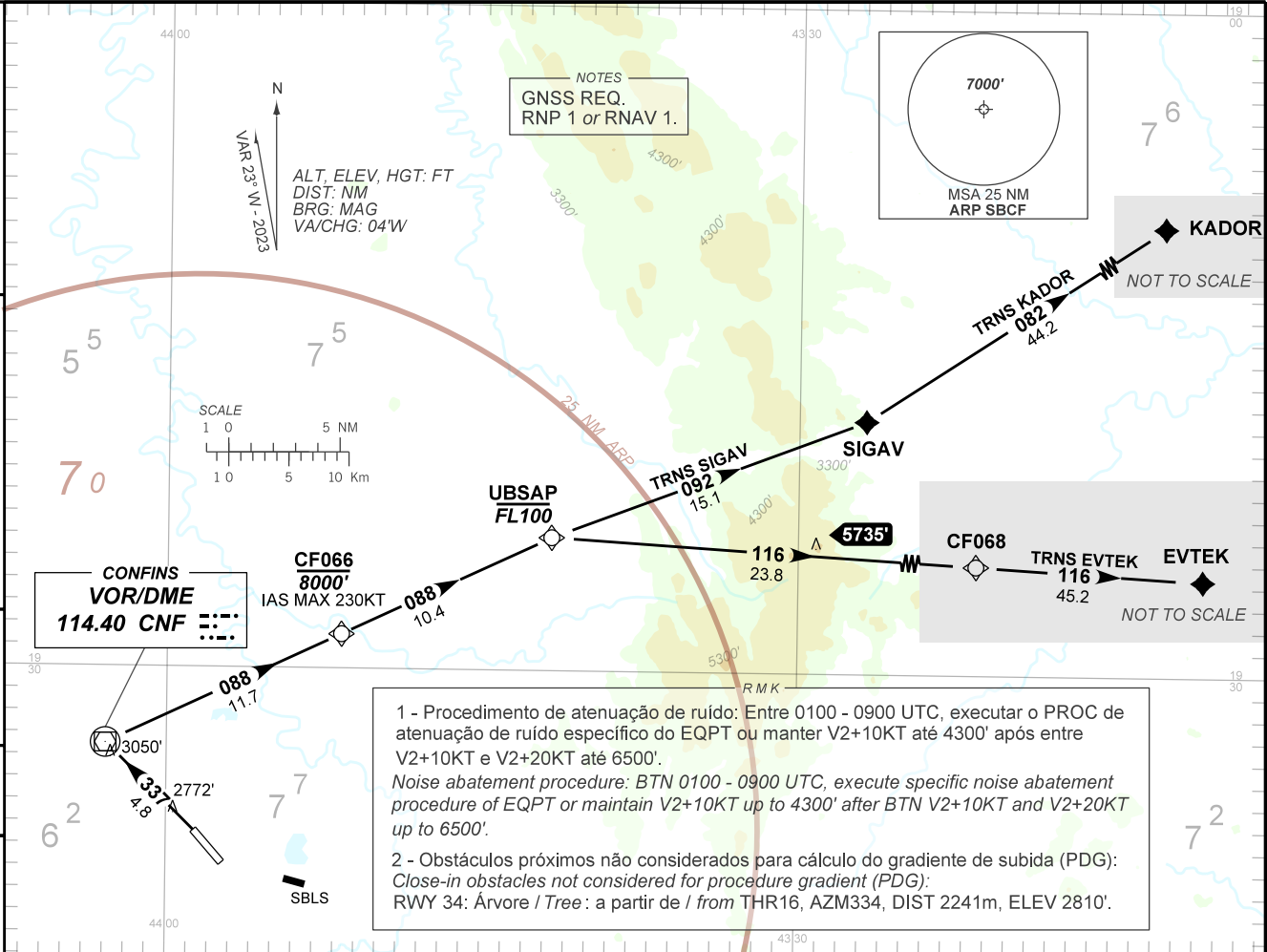
ACC BRASÍLIA
126.75 127.30

APP BELO HORIZONTE
119.10 119.30 119.65 120.20
128.55 129.10 129.40

TWR CONFINES
118.20

D-ATIS
127.85

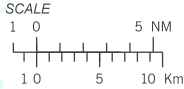
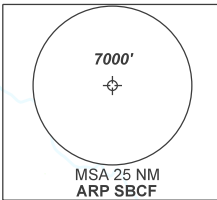
AD ELEV: 2721'
TA 8000'



CONFINES
VOR/DME
114.40 CNF

ALT, ELEV, HGT: FT
DIST: NM
BRG: MAG
VA/CHG: 04W

NOTES
GNSS REQ.
RNP 1 or RNAV 1.



1 - Procedimento de atenuação de ruído: Entre 0100 - 0900 UTC, executar o PROC de atenuação de ruído específico do EQPT ou manter V2+10KT até 4300' após entre V2+10KT e V2+20KT até 6500'.
Noise abatement procedure: BTN 0100 - 0900 UTC, execute specific noise abatement procedure of EQPT or maintain V2+10KT up to 4300' after BTN V2+10KT and V2+20KT up to 6500'.

2 - Obstáculos próximos não considerados para cálculo do gradiente de subida (PDG):
Close-in obstacles not considered for procedure gradient (PDG):
RWY 34: Árvore / Tree : a partir de / from THR16, AZM334, DIST 2241m, ELEV 2810'.