

**INSTRUMENT APPROACH  
CHART (IAC)**

**SÃO GONÇALO DO AMARANTE / Gov. Aluizio Alves, INTL (SBSG)**

**AD ELEV: 273'**

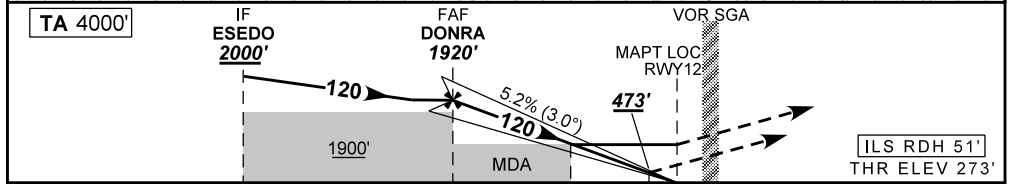
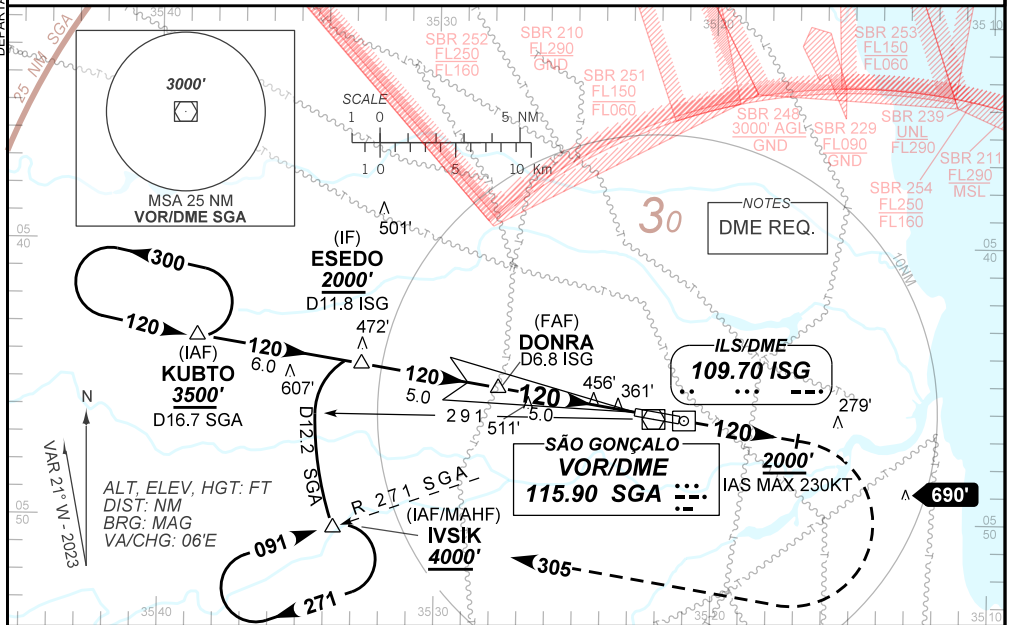
**ILS Z or LOC Z RWY 12**

ATIS <b>127.60</b>	APP NATAL <b>119.30 119.65 120.65 129.80</b>		TWR SÃO GONÇALO <b>118.20 118.85</b>	GNDC SÃO GONÇALO <b>121.70</b>
ILS/DME ISG <b>109.70 MHz</b>	FINAL CRS <b>120°</b>	FAF: <b>1920'</b>	CAT I <b>DA / (OCH): 473' / (200')</b>	LOC <b>MDA / (OCH): 760' / (490')</b>

APCH Perdida: 1) Subir para **4000'**. Manter proa **120** do VOR SGA até **2000'**. Após, curvar à DIREITA proa **305** para interceptar RDL **271** do VOR SGA até IVSIK para espera. 2) Proibido rebloqueio do VOR SGA.  
Missed APCH: 1) Climb to **4000'**. Maintain heading **120** SGA VOR until **2000'**. After, turn **RIGHT** heading **305** to intercept **271** RDL SGA VOR to IVSIK for holding. 2) Flying overhead SGA VOR is prohibited.

RMK: (\*) VIS RVR ALS 550m para APCH utilizando Diretor de Voo, Piloto Automático ou Head-up Display (HUD)  
(\*) VIS RVR ALS 550m for APCH using a Flight Diretor, Autopilot or Head-up Display (HUD).

DEPARTAMENTO DE CONTROLE DO ESPAÇO AÉREO



TO THR 12 (NM)	10.0	5.0	1.4	0.5	0.0
TO ISG (DME)	11.8	6.8	3.2	2.3	1.8

	DONRA	4.0	3.0	2.0	1.4	RWY 12
	1920	1598	1279	961	760	ALT
	1647	1325	1006	688	490	(HGT)

Ground Speed (KT)	090	110	130	150	170	190
FPM	500	600	700	800	900	NA
FAF-MAPT	NA					

STRAIGHT-IN	CAT	A	B	C	D	E
	DA / (OCH)	473' / (200')				
CAT I	ALS/NO ALS/ RVR ALS (m)	800 / 1200 / 700 (*)				
	MDA / (OCH)	760' / (490')				
LOC	ALS/NO ALS/ RVR ALS (m)	900 / 1600 / 850			1500 / 2300 / 1400	
	MDA / (OCH)	NA				
CIRCLING	MDA / (OCH)	NA				
	VIS (m)	NA				

CHANGES: AD ELEV. AD THR. LAYOUT. PROC.