

**INSTRUMENT APPROACH  
CHART (IAC)**

**BRASÍLIA / Pres. Juscelino Kubitschek, INTL (SBBR)**

**AD ELEV: 3498'**

**RNP V RWY 11R**

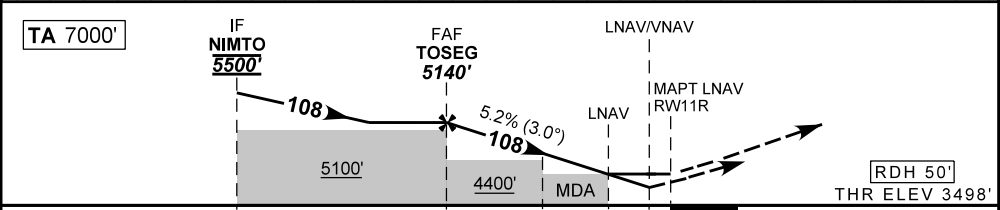
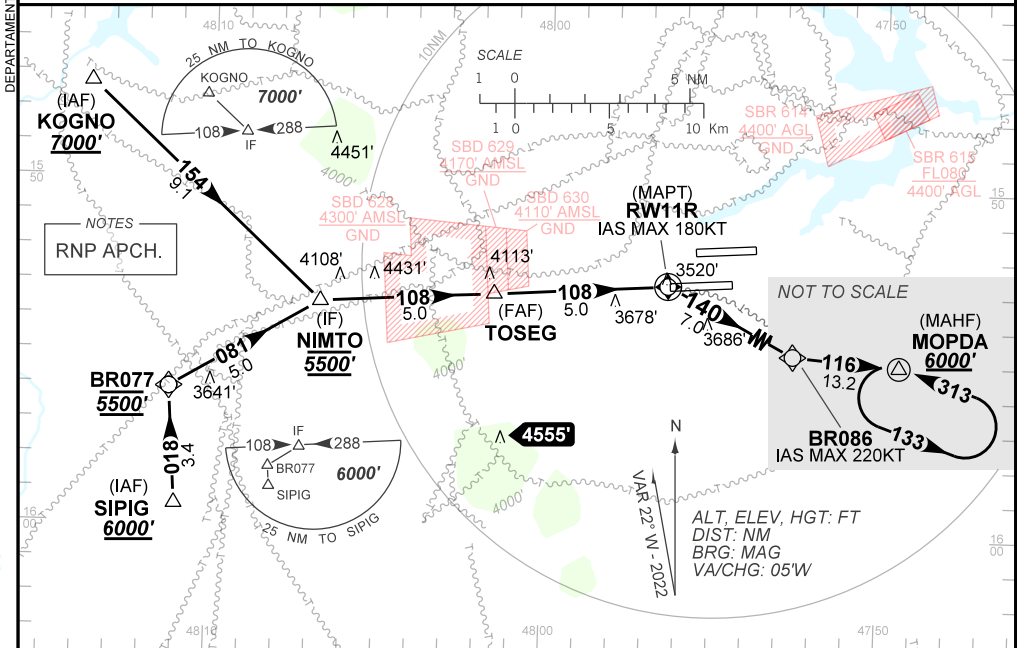
D-ATIS <b>127.80</b>	APP BRASÍLIA <b>119.70 129.60 119.20 120.00</b>	TWR BRASÍLIA <b>118.10 118.45 118.75</b>	GNDC BRASÍLIA <b>121.80 121.95</b>
-------------------------	--	---	---------------------------------------

TEMP LNAV/VNAV <b>MIN 0°C / MAX 50°C</b>	FINAL CRS <b>108°</b>	FAF: <b>5140'</b>	LNAV/VNAV DA / (OCH): <b>3872' / (374')</b>	LNAV MDA / (OCH): <b>3920' / (430')</b>
---	--------------------------	----------------------	--	--

APCH Perdida: Subir para **6000'** curvando à DIREITA para interceptar rumo **140** até BR086. Após, curvar à ESQUERDA no rumo **116** até MOPDA para espera.

Missed APCH: Climbing **RIGHT** turn to **6000'** to intercept course **140** until BR086. After, turn **LEFT** course **116** until MOPDA for holding.

**RMK: Aproximações Paralelas Independentes / Independent Parallel Approaches.**



TO THR 11R (NM) 10.0 5.0 2.7 1.2 1.0 0.0 THR ELEV 3498'

	TOSEG	4.0	2.7	2.0	1.2	RWY11R	Ground Speed (KT)	090	110	130	150	170	190
		5140	4822	4408	4185	3920	FPM	500	600	700	800	900	1000
		1642	1324	910	687	430	FAF-MAPT	NA					

STRAIGHT-IN	CAT	A	B	C	D	E	
	DA / (OCH)	3872' / (374')					NA
LNAV/VNAV	ALS/NO ALS/ RVR ALS (m)	1000 / 1700 / 1000					NA
	MDA / (OCH)	3920' / (430')					NA
LNAV	ALS/NO ALS/ RVR ALS (m)	1000 / 1700 / 1000			1300 / 2000 / 1100		
	MDA / (OCH)	NA					NA

CHANGES: EAC. LAYOUT: WPT.