

**INSTRUMENT APPROACH  
CHART (IAC)**

**SÃO PAULO / Guarulhos - Gov. André Franco Montoro, INTL (SBGR)**

**AD ELEV: 2461'**

**RNP X RWY 10R**

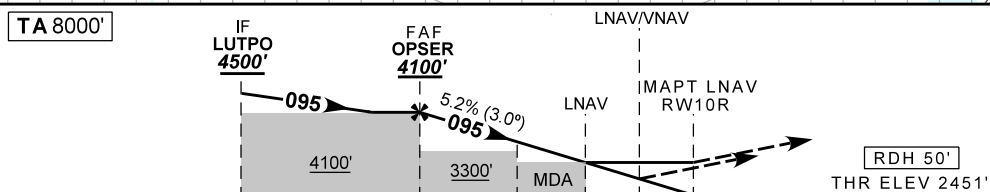
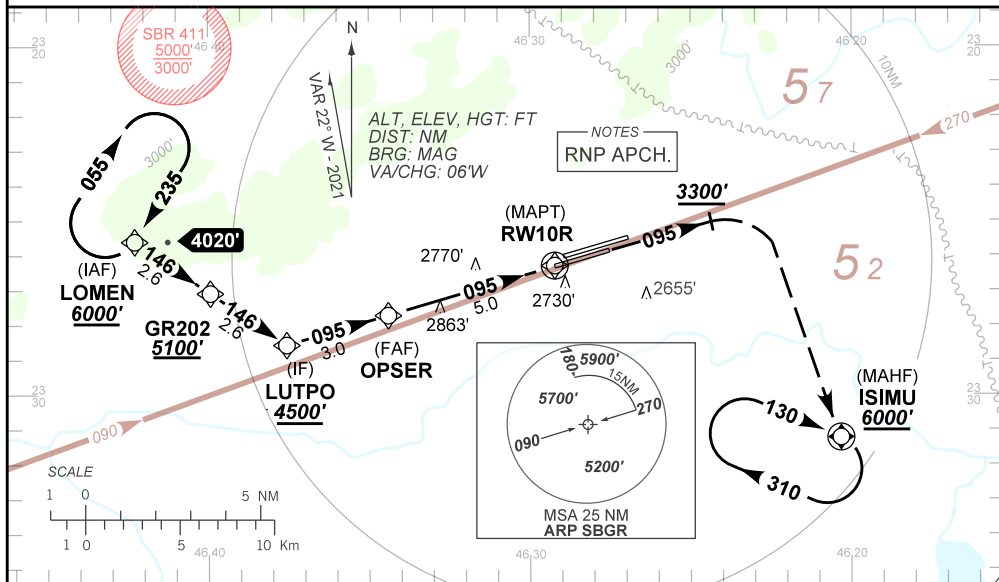
D-ATIS <b>127.75</b>	APP SÃO PAULO <b>129.75 119.15 120.45 120.85 133.85</b>	TWR GUARULHOS <b>118.40 132.75 135.20</b>	GNDX GUARULHOS <b>121.70 126.90</b>
TEMP LNAV/VNAV <b>MIN -10°C / MAX 50°C</b>	FINAL CRS <b>095°</b>	FAF <b>4100'</b>	LNAV/VNAV DA / (OCH): <b>2891' / (440')</b>
		MDA / (OCH): <b>2980' / (530')</b>	

APCH Perdida: 1) Subir para **6000'**. Manter rumo **095** até cruzar **3300'**. Após, curvar à DIREITA direto ISIMU para espera; 2) IAS MAX 230KT.

Missed APCH: 1) Climb to **6000'**. Maintain course **095** until passing **3300'**. Then, turn RIGHT direct to ISIMU for holding; 2) IAS MAX 230KT.

ARREMETIDA VISUAL RWY 10L: Subir para **6000'**. Manter proa **095** e aguardar instruções ATC.

VISUAL GO AROUND RWY 10L: Climb to **6000'**. Maintain heading **095** and expect ATC instructions.



TO THR 10R (NM)	8.0	5.0	2.5	1.5	1.2	0.0															
	OPSEK	4100	3775	3457	3138	2891	RWY10R														
		1649	1324	1006	687	442	(HGT)														

STRAIGHT-IN	CAT	A	B	C	D	E
LNAV/VNAV	DA / (OCH)	2891' / (440')				NA
	ALS/NO ALS/ RVR ALS (m)	1300 / 2000 / NIL				
LNAV	MDA / (OCH)	2980' / (530')				
	ALS/NO ALS/ RVR ALS (m)	1300 / 2000 / NIL		1700 / 2400 / NIL		
CIRCLING	MDA / (OCH)	NA				
	VIS (m)	NA				

CHANGES: LAYOUT, THR.

DEPARTAMENTO DE CONTROLE DO ESPAÇO AÉREO