

**INSTRUMENT APPROACH
CHART (IAC)**

AD ELEV: 10'

ANGRA DOS REIS / Angra dos Reis (SDAG)

**RNP 124
PINS - (CAT H)**

DEPARTAMENTO DE CONTROLE DO ESPAÇO AÉREO

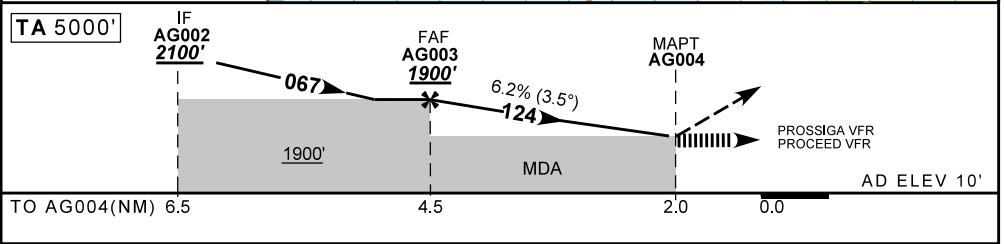
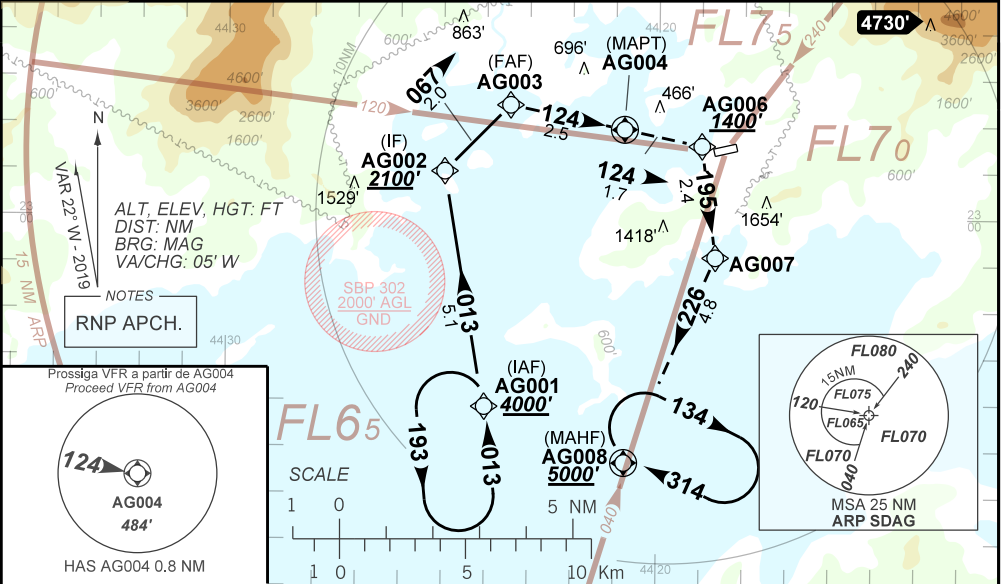
ATIS NIL	ERAA 132.35	APP RIO 119.00 119.35 120.55 126.20 128.90 129.20 129.80 133.30					FCA 125.275	GND C NIL
-------------	----------------	--	--	--	--	--	----------------	--------------

N/A	FINAL CRS 124°	FAF: 1900'	N/A	LNAV MDA / (OCH): 950' / (940')
-----	-------------------	---------------	-----	------------------------------------

APCH Perdida: 1) Subir para **5000'**. Gradiente MNM de 7.5% até **3000'**. Manter o rumo **124** até AG006. Após, curvar à DIREITA direto AG007. Curvar à DIREITA direto AG008 para espera. 2) IAS MAX 70KT até AG007.
Missed APCH: 1) Climb to **5000'**, MNM gradient 7.5% until **3000'**. Maintain course **124** until AG006. After, turn RIGHT direct AG007. After, turn RIGHT to AG008 for holding. 2) IAS MAX 70KT until AG007.

RMK: 1) Contato obrigatório na FCA. Proibido iniciar aproximação enquanto houver outro tráfego executando procedimento de decolagem 2) Requerido FPL "Y" com mudança de regras em AG004.

1) Aircraft must contact FCA. Prohibited start approaching while there is another traffic executing departure procedure 2) FPL "Y" required with flight rules change at AG004.



AG003	4.0	3.0	2.0	RWY10	Ground Speed (KT)	060	070	080	090
1900	1710	1320	950	ALT	FPM	390	460	520	590
	NIL			(HGT)	FAF-MAPT			NA	

STRAIGHT-IN	CAT	H
LNAV	MDA / (OCH)	950' / (940')
	VIS (m)	1500
CIRCLING	MDA / (OCH)	NA
	VIS (m)	

CHANGES: FREQ, IDENT, EAC, LAYOUT.