

STANDARD DEPARTURE CHART
INSTRUMENT (SID)

BRASÍLIA / Pres. Juscelino Kubitschek, INTL (SBBR)

RWY 11L

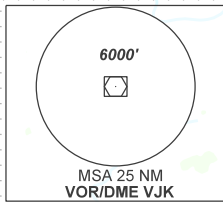
NIRDI 1A

AD ELEV: 3498'

TA 7000'	D-ATIS 127.80	TWR BRASÍLIA 118.10 118.45 118.75 121.50	APP BRASÍLIA 129.15 129.60 119.50 121.50	ACC BRASÍLIA 124.50 135.00 121.50
----------	------------------	---	---	--------------------------------------

DEPARTAMENTO DE CONTROLE DO ESPAÇO AÉREO

CHANGES: D-ATIS, EAC, LAYOUT, WPT.



KOGLI
54.7 DME VJK

1 - Procedimento de atenuação de ruído:
Entre 0100 - 0900 UTC, executar o PROC de atenuação de ruído específico do EQPT ou manter V2+10KT até 4300FT após entre V2+10KT e V2+20KT até 6500FT.
*Noise abatement procedure:
BTN 0100 - 0900 UTC, execute specific noise abatement procedure of EQPT or maintain V2+10KT up to 4300FT after BTN V2+10KT and V2+20KT up to 6500FT.*

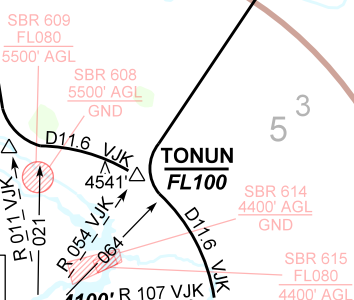
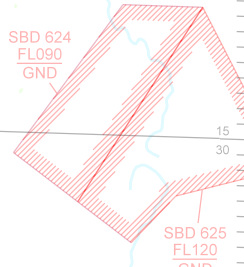


ALT, ELEV, HGT: FT
DIST: NM
BRG: MAG
VA/CHG: 06°W

NOTES
DME REQ.

TRANS KOGLI
011

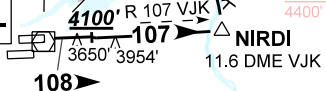
TRANS UTMAN
054



LIXEM

TONUN
FL100

KUBITSCHKE
VOR/DME
117.50 VJK



4555' Δ

