

**INSTRUMENT APPROACH
CHART (IAC)**

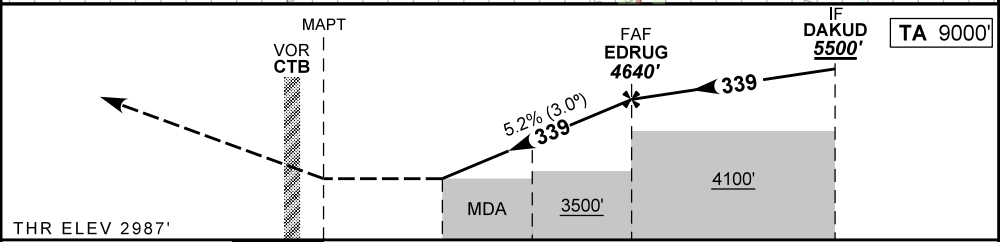
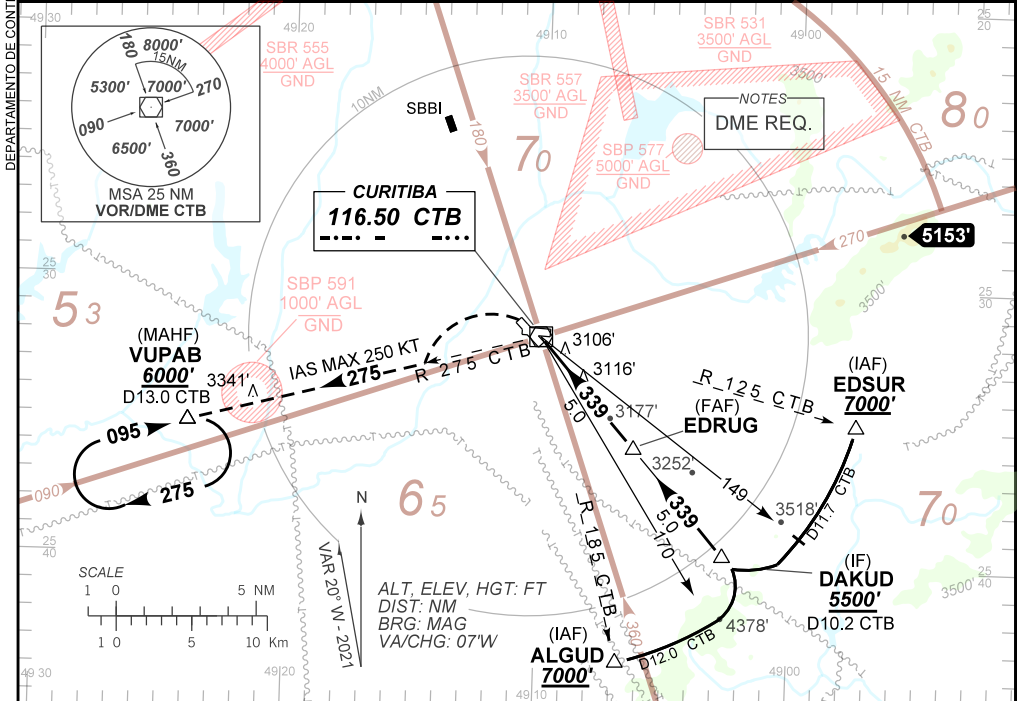
CURITIBA / Afonso Pena, INTL (SBCT)

VOR Y RWY 33

AD ELEV: 2989'

D-ATIS 127.80	APP CURITIBA 119.95 119.70 120.65 129.55 120.95 133.15	TWR CURITIBA 118.15	GNDC CURITIBA 121.90
VOR CTB 116.50 MHz	FINAL CRS 339°	FAF: 4640'	N/A
VOR		MDA / (OCH): 3400' / (420')	

APCH Perdida: Subir para **6000'**, em curva à ESQUERDA RDL **275°** CTB para espera em VUPAB.
Missed APCH: Climbing **LEFT** turn to **6000'** to intercept **275°** CTB RDL for holding at VUPAB.



THR ELEV 2987'						
TO THR 33 (NM)	0.0	1.2	2.6	5.0	10.0	
TO CTB (DME)	0.2	1.4	2.8	5.2	10.2	
RWY33	1.2	2.0	2.6	3.0	4.0	EDRUG
ALT	3400	3674	3873	3992	4311	4640
(HGT)	420	687	886	1005	1324	1653
Ground Speed (KT)	090	110	130	150	170	190
FPM	500	600	700	800	900	NA
FAF-MAPT	NA					

STRAIGHT-IN	CAT	A	B	C	D	E
	MDA / (OCH)	3400' / (420')				
VOR	ALS / NO ALS / RVR ALS (m)	NIL / 1600 / NIL		NIL / 1900 / NIL		NA
	MDA / (OCH)	NA				
CIRCLING	MDA / (OCH)	NA				
	VIS (m)	NA				

AIRAC AMDT 2113A1 30 DEC 21

SBCT_IAC_01B 1/1
IAC VOR Y RWY 33

CHANGES: ALT, LAYOUT, MINN, OPR, VAR.

DEPARTAMENTO DE CONTROLE DO ESPAÇO AÉREO