

**INSTRUMENT APPROACH
CHART (IAC)**

SOROCABA / Sorocaba (SDCO)

RNP Y RWY 19

(CAT A,B,C)

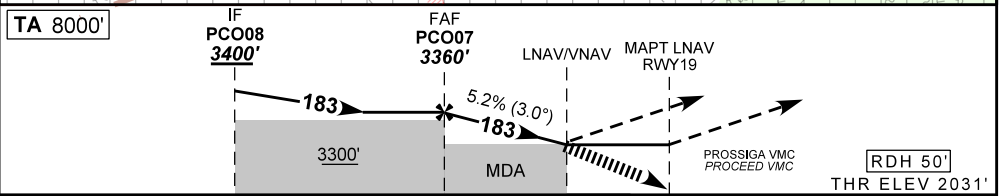
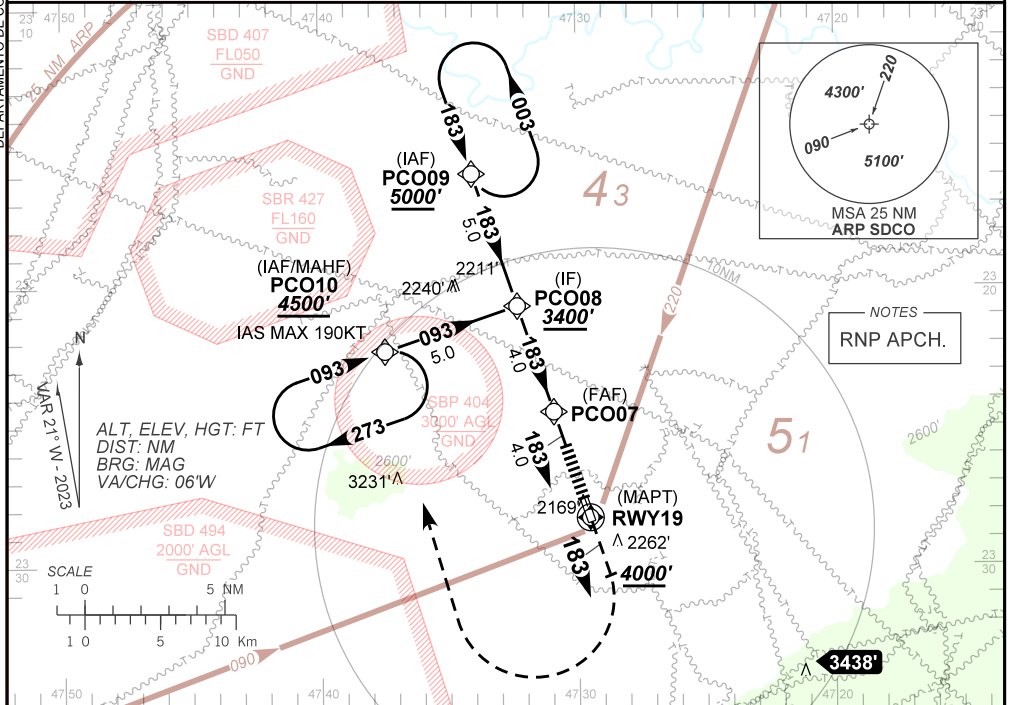
AD ELEV: 2083'

ATIS 127.775	APP SÃO PAULO 129.50 119.25 119.80	AFIS SOROCABA 118.80	TWR SOROCABA 118.80	GND C SOROCABA 121.80
TEMP LNAV/VNAV MIN -10°C / MAX 50°C	FINAL CRS 183°	FAF: 3360'	LNAV/VNAV DA / (OCH): 3031' / (1000')	LNAV MDA / (OCH): 3040' / (1000')

APCH Perdida: Subir para **4500'**. Manter rumo **183** até **4000'**. Após, curvar à DIREITA direto PCO10 para espera.

Missed APCH: Climb to **4500'**. Maintain course **183** until **4000'**. After, turn RIGHT direct PCO10 for holding.

DEPARTAMENTO DE CONTROLE DO ESPAÇO AÉREO



TO THR 19 (NM) 8.0 4.0 3.0 0.0

		PCO07	3.0	RWY 19	Ground Speed (KT)	090	110	130	150	170	190
		3360	3040	ALT	FPM	500	600	700	800	NA	
		1329	1000	(HGT)	FAF-MAPT	NIL					

STRAIGHT-IN	CAT	A	B	C	D	E
	LNAV/VNAV	DA / (OCH) 3031' / (1000')			NA	
LNAV	ALS/NO ALS/ RVR ALS (m)	NIL / 5000 / NIL			NA	
	MDA / (OCH)	3040' / (1000')			NA	
CIRCLING	ALS/NO ALS/ RVR ALS (m)	NIL / 5000 / NIL			NA	
	MDA / (OCH)	NIL / 5000 / NIL			NA	
	VIS (m)	NA				

CHANGES: NEW CHART.