

**INSTRUMENT APPROACH  
CHART (IAC)**

**RECIFE / Guararapes - Gilberto Freyre, INTL (SBRF)**

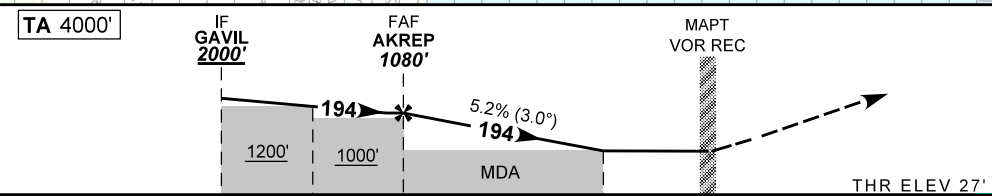
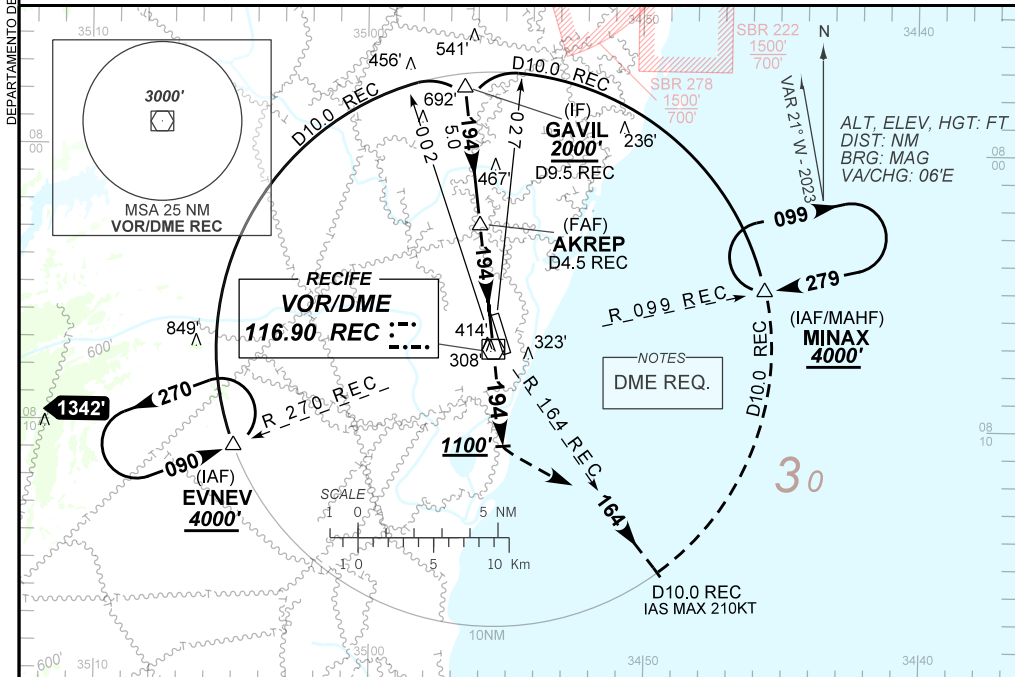
**AD ELEV: 33'**

**VOR RWY 18**

D-ATIS <b>127.65</b>	APP RECIFE <b>119.50 119.95 120.40 129.20 129.60 126.60</b>			TWR RECIFE <b>125.25 118.35</b>	GNDC RECIFE <b>121.85</b>
VOR REC <b>116.90 MHz</b>	FINAL CRS <b>194°</b>	FAF: <b>1080'</b>	<b>N/A</b>	VOR MDA / (OCH): <b>660' / (630')</b>	

APCH Perdida: Subir para **4000'**. Manter RDL **194** do VOR REC até **1100'**. Após, curvar a ESQUERDA para interceptar RDL **164** do VOR REC e ingressar no arco DME 10.0NM REC até MINAX para espera.

Missed APCH: Climb to **4000'**. Maintain **194** RDL REC VOR until **1100'**. After turn LEFT to intercept **164** RDL REC VOR and intercept 10.0NM DME arc REC VOR until MINAX for holding.



TO THR 18 (NM)	8.2	5.7	3.2	1.8	0.0
TO REC (DME)	9.5	7.0	4.5	3.1	1.3

	AKREP	3.0	2.0	1.8	RWY 18	Ground Speed (KT)	090	110	130	150	170	190
	1080	1032	714	660	ALT	FPM	500	600	700	800	900	NA
	1053	1005	687	630	(HGT)	FAF-MAPT	NA					

STRAIGHT-IN	CAT	A	B	C	D	E
VOR	MDA / (OCH)	660' / (630')				
	ALS/NO ALS/ RVR ALS (m)	NIL / 1600 / NIL		NIL / 2900 / NIL		
CIRCLING	MDA / (OCH)	NA				
	VIS (m)	NA				

CHANGES: EAC, FREQ, IDENT, LAYOUT, PROC, VAR.