

INSTRUMENT APPROACH  
CHART (IAC)

SÃO PAULO / Congonhas (SBSP)

AD ELEV: 2631'

RNP T RWY 17L

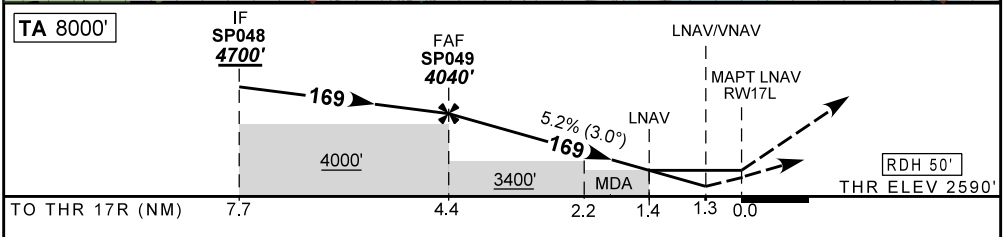
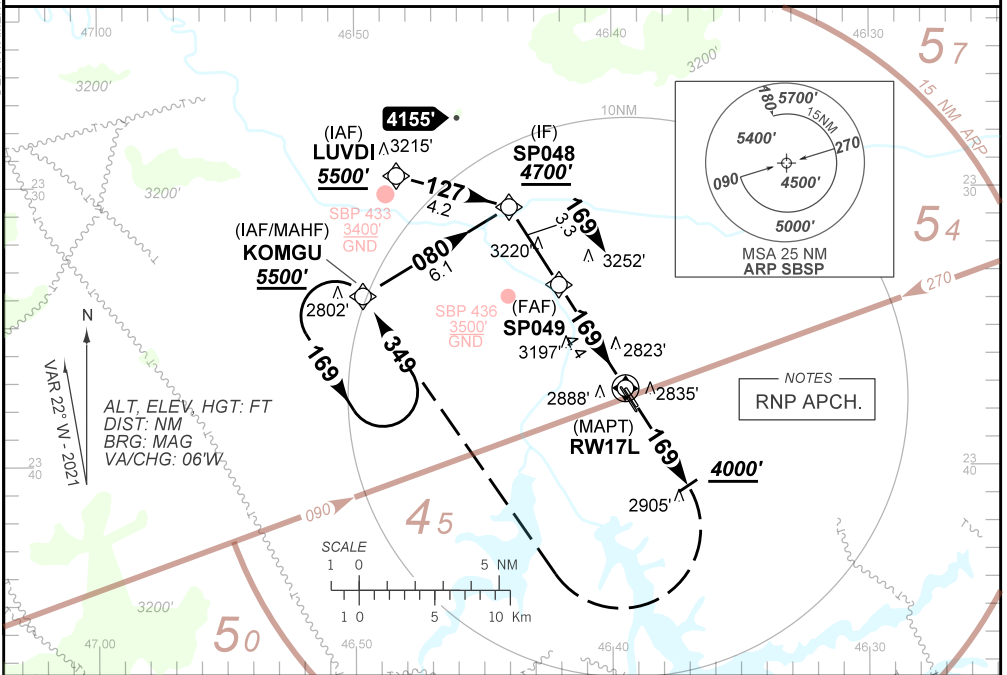
D-ATIS 127.65	APP SÃO PAULO 129.75 119.15 120.45 120.85 133.85	TWR SÃO PAULO 118.05 127.15	GNDC SÃO PAULO 121.90
------------------	--	--------------------------------	--------------------------

TEMP LNAV/VNAV MIN 0°C / MAX 50°C	FINAL CRS 169°	FAF 4040'	LNAV/VNAV DA / (OCH): 3040' / (450')	LNAV MDA / (OCH): 3090' / (510')
--------------------------------------	-------------------	--------------	---	-------------------------------------

APCH Perdida: 1) Subir para **5500'**. Manter rumo **169** até cruzar **4000'**. Após, Curvar à DIREITA direto KOMGU para espera. 2) IAS MAX 200KT.

Missed APCH: 1) Climb to **5500'**. Maintain course **169** until passing **4000'**. Then, Turn RIGHT direct to KOMGU for holding. 2) IAS MAX 200KT.

RMK: NIL.



	SP049	4.0	3.0	2.0	1.3	RW17L	Ground Speed (KT)	090	110	130	150	170	190
	4040	3913	3595	3276	3040	ALT	FPM	500	600	700	800	NA	NA
	1451	1324	1006	687	450	(HGT)	FAF-MAPT	NA					

STRAIGHT-IN	CAT	A	B	C	D	E
LNAV/VNAV	DA / (OCH)	3040' / (450')				NA
	ALSF/NO ALSF/RVR ALSF (m)	NIL / 2100 / NIL				
LNAV	MDA / (OCH)	3090' / (510')				
	ALSF/NO ALSF/RVR ALSF (m)	NIL / 2100 / NIL		NIL / 2400 / NIL		
CIRCLING	MDA / (OCH)	NA				
	VIS (m)					

AIRAC AMDT 2105A3 20 MAY 21

SBSP\_IAC\_02C 1/1  
IAC RNP T RWY 17L

DEPARTAMENTO DE CONTROLE DO ESPAÇO AÉREO