

INSTRUMENT APPROACH
CHART (IAC)

FERNANDO DE NORONHA / Fernando de Noronha (SBFN)

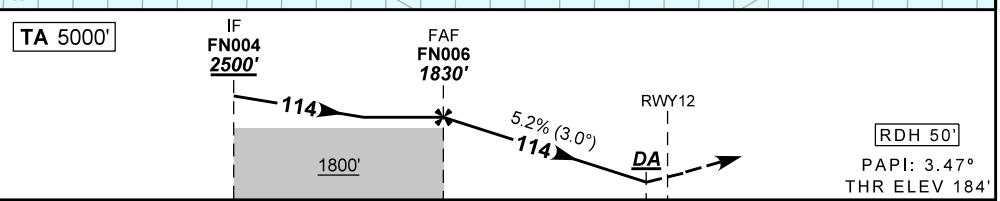
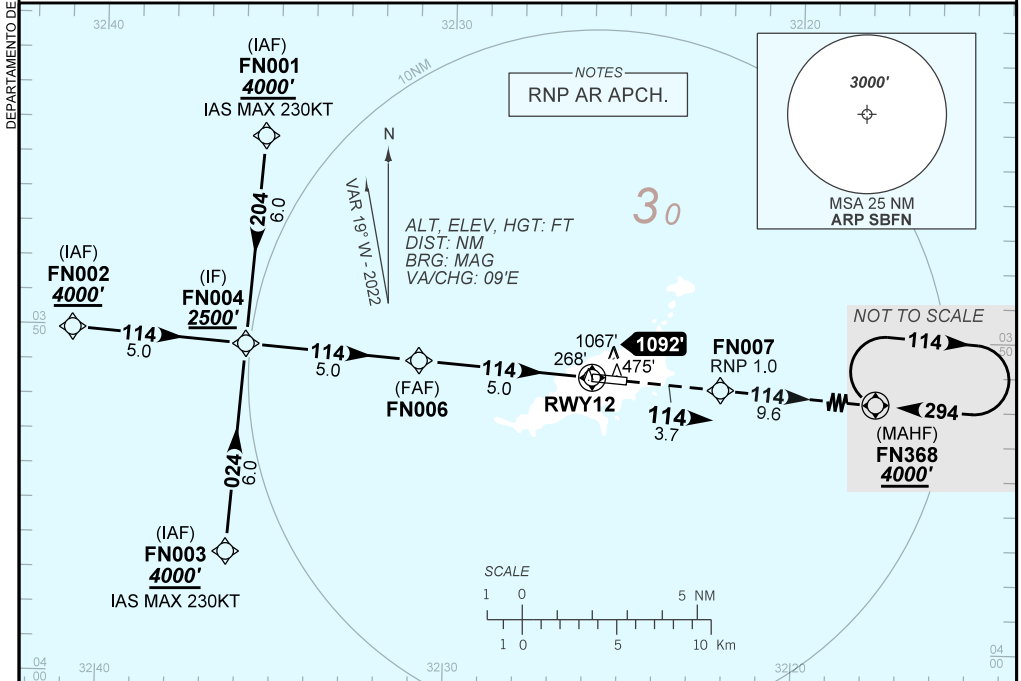
AD ELEV: 184'

RNP Y RWY 12 (AR)

| | | | |
|---------------------------------------|-------------------|------------------------|--|
| ATIS NIL | APP NIL | AFIS NORONHA 125.90 | GNDC NIL |
| TEMP LNAV/VNAV MIN 12°C / MAX 50°C | FINAL CRS 114° | FAF: 1830' | RNP 0.1 DA / (OCH): 637' / (453') |
| | | | RNP 0.3 DA / (OCH): 1228' / (1044') |

APCH Perdida: 1) Subir para **4000'**. Manter rumo **114** até FN368 para espera. 2) RNP menor que 1.0 entre RWY12 e FN007.

Missed APCH: 1) Climb to **4000'**. Maintain course **114** until FN368 for holding. 2) RNP below 1.0 between RWY12 and FN007.



TO THR 12 (NM) 10.0 5.0 0.0

| | | | | | | | | | | | | | |
|--|-------|------|------|-----|-----|-------|-------------------|-----|-----|-----|-----|-----|-----|
| | FN006 | 4.0 | 3.1 | 2.0 | 1.3 | RWY12 | Ground Speed (KT) | 090 | 110 | 130 | 150 | 170 | 190 |
| | 1830 | 1508 | 1228 | 871 | 637 | ALT | FPM | 500 | 600 | 700 | 800 | 900 | NA |
| | 1646 | 1324 | 1044 | 687 | 453 | (HGT) | FAF-MAPT | NIL | | | | | |

| | | | | | | |
|-------------|-------------------------|------------------|---|---|---|----|
| STRAIGHT-IN | CAT | A | B | C | D | E |
| RNP 0.1 | DA / (OCH) | 637' / (453') | | | | NA |
| | ALS/NO ALS/ RVR ALS (m) | NIL / 2100 / NIL | | | | |
| RNP 0.3 | DA / (OCH) | 1228' / (1044') | | | | |
| | ALS/NO ALS/ RVR ALS (m) | NIL / 4900 / NIL | | | | |

AUTORIZAÇÃO ESPECIAL PARA AERONAVE E TRIPULAÇÃO REQUERIDA
SPECIAL AUTHORIZATION FOR AIRCRAFT AND CREW REQUIRED

CHANGES: ATIS: