

**INSTRUMENT APPROACH  
CHART (IAC)**

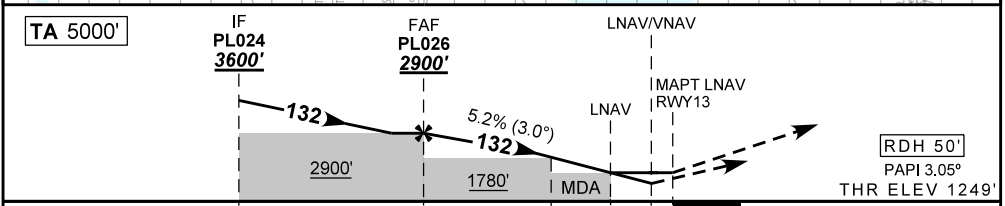
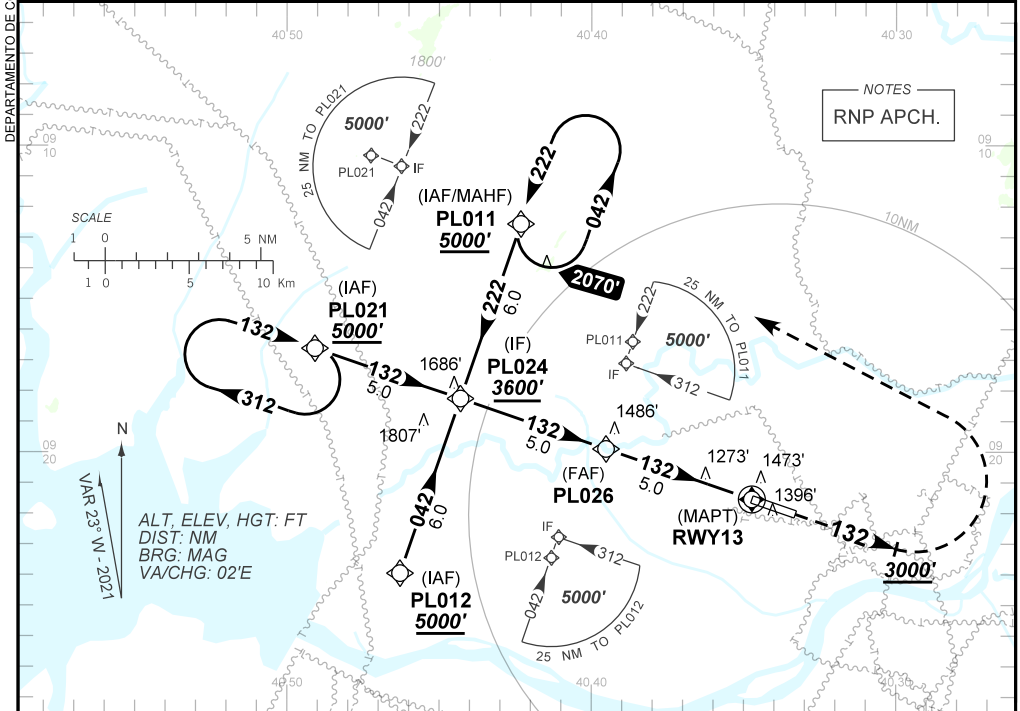
**PETROLINA / Senador Nilo Coelho, INTL (SBPL)**

**AD ELEV: 1263'**

**RNP RWY 13**

ATIS NIL	APP NIL	AFIS PETROLINA 125.70	GNDC NIL
TEMP LNAV/VNAV <b>MIN 10°C / MAX 50°C</b>	FINAL CRS <b>132°</b>	FAF: <b>2900'</b>	LNAV/VNAV DA / (OCH): <b>1505' / (256')</b>
LNAV MDA / (OCH): <b>1570' / (330')</b>			

APCH Perdida: Subir para **5000'**. Manter rumo **132** até passar **3000'**. Após, curvar à ESQUERDA direto PL011 para espera.  
 Missed APCH: Climb to **5000'**. Maintain course **132** until passing **3000'**. After, turn LEFT direct to PL011 for holding.



TO THR 13 (NM)	10.0	5.0	1.5	0.9	0.6	0.0
PL026	4.0	3.0	1.5	0.9	RWY 13	
2900	2573	2254	1782	1570	ALT	
1651	1324	1005	533	330	(HGT)	
Ground Speed (KT)	090	110	130	150	170	190
FPM	500	600	700	800	900	NA
FAF-MAPT	NIL					

STRAIGHT-IN	CAT	A	B	C	D	E	
	DA / (OCH)	1505' / (256')					NA
LNAV/VNAV	ALS/NO ALS/ RVR ALS (m)	NIL / 1300 / NIL					
	MDA / (OCH)	1570' / (330')					
LNAV	ALS/NO ALS/ RVR ALS (m)	NIL / 1600 / NIL					
	MDA / (OCH)	NA					
CIRCLING	MDA / (OCH)	NA					
	VIS (m)	NA					

CHANGES: IDENT, PAPI