

**INSTRUMENT APPROACH
CHART (IAC)**

GAVIÃO PEIXOTO / EMBRAER - Unidade Gavião Peixoto (SBGP)

**USO EXCLUSIVO ACFT MILITARES
MILITARY ACFT ONLY**

ILS Y RWY 20L

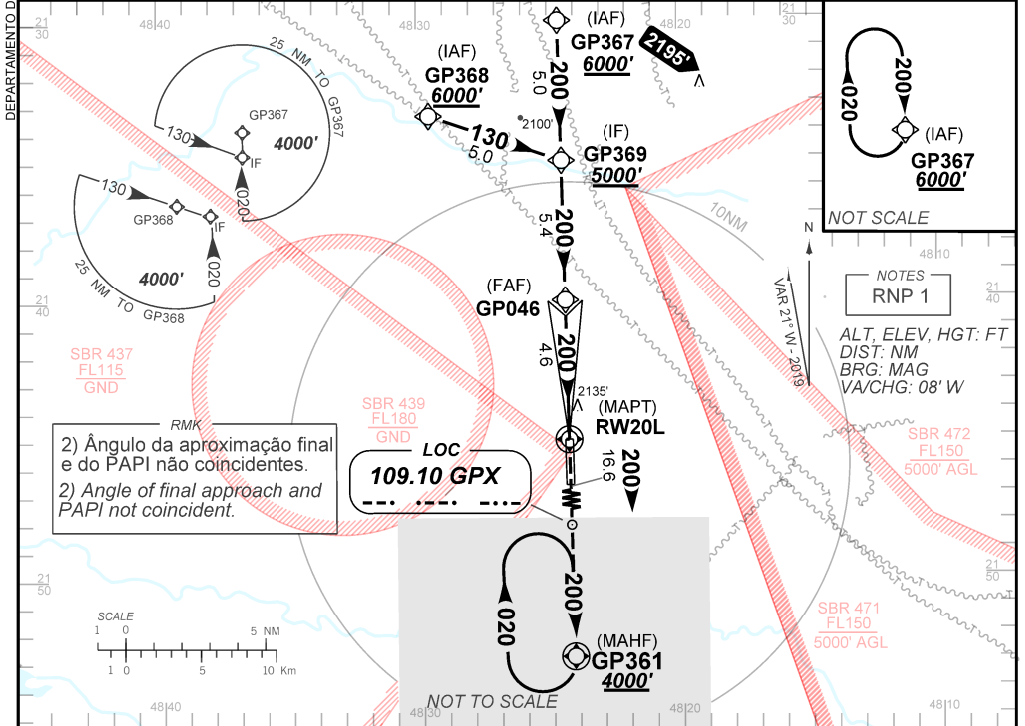
AD ELEV: 1998'

ATIS NIL	APP ACADEMIA 122.10 122.40	AFIS GAVIÃO 118.95	LOC GPX 109.10 MHz
FINAL CRS 200°	FAF: 5000'	CAT I DA / (OCH): 2321' (324')	N/A

APCH Perdida: Subir para **4000'**. Manter rumo **200** até GP361 para espera.

Missed APCH: Climb to **4000'**. Maintain course **200** up to GP361 for holding.

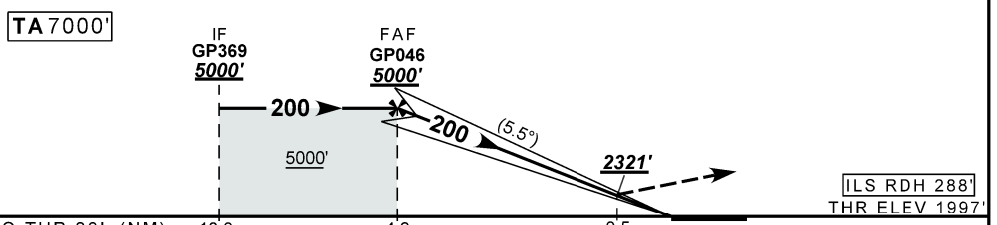
RMK: 1) Procedimento de uso exclusivo da EMBRAER para ensaio em voo. Compulsório voo diurno sob VFR.
1) Procedure of exclusive use by EMBRAER for flight test. Compulsory daylight flight under VFR.



RMK
2) Ângulo da aproximação final do PAPI não coincidentes.
2) Angle of final approach and PAPI not coincident.

LOC
109.10 GPX

NOTES
RNP 1
ALT, ELEV, HGT: FT
DIST: NM
BRG: MAG
VA/CHG: 08' W



TO THR 20L (NM) 10.0 4.6 0.5

NIL	RW20L	KT	NIL
NIL	ALT	FPM	NIL
NIL	(HGT)	FAF-MAPT	NIL

STRAIGHT-IN	CAT	A	B	C	D	E
CAT I	DA / (OCH)	2321' / (324')				
	ALS/NO ALS/ RVR ALS (m)	NIL / 1600 / NIL				
CIRCLING	MDA / (OCH)	NA				
	VIS (m)	NA				