

**INSTRUMENT APPROACH  
CHART (IAC)**

**NATAL / Augusto Severo, MIL (SBNT)**

**AD ELEV: 171'**

**RNP RWY 34R**

D-ATIS <b>132.65</b>	APP NATAL <b>119.30 119.65 120.65 129.80</b>	TWR NATAL <b>118.70 122.80</b>	GNDC NATAL <b>121.90</b>
-------------------------	---	-----------------------------------	-----------------------------

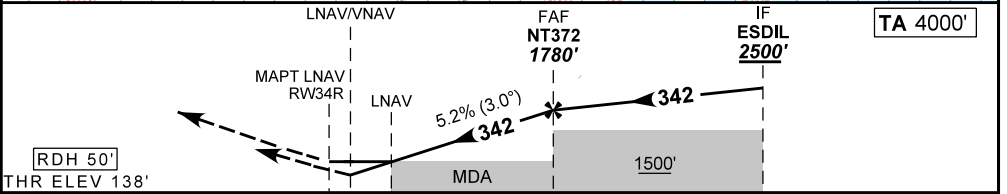
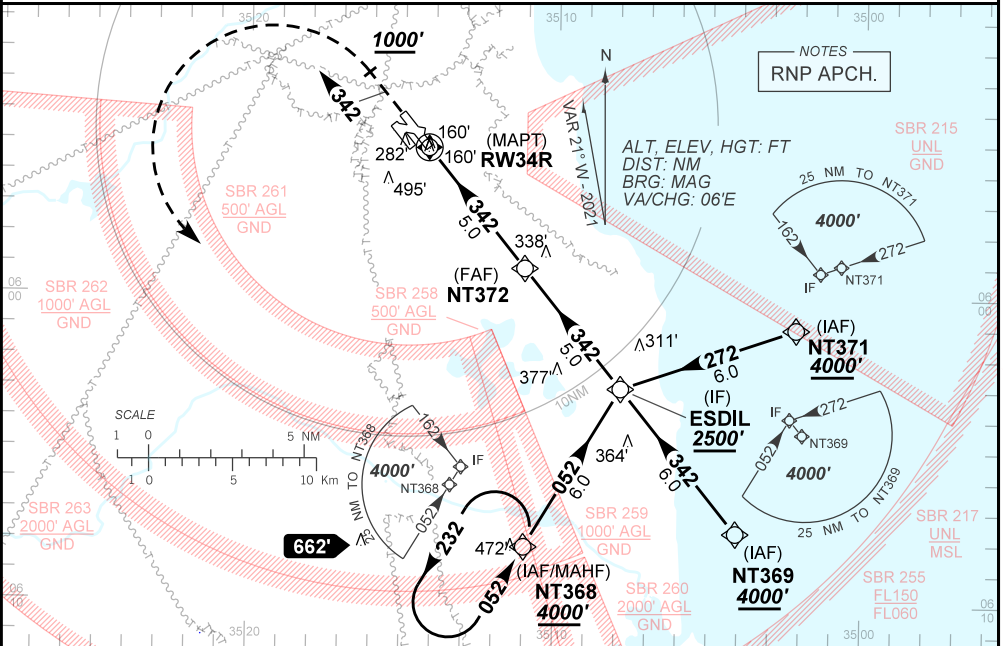
TEMP LNAV/VNAV <b>MIN 0°C / MAX 50°C</b>	FINAL CRS <b>342°</b>	FAF: <b>1780'</b>	LNAV/VNAV DA / (OCH): <b>450' / (312')</b>	LNAV MDA / (OCH): <b>590' / (450')</b>
---	--------------------------	----------------------	---	---

APCH Perdida: Subir para **4000'**, gradiente MNM 4.0% até **1000'**. Manter proa **342** até cruzar **1000'**. Após, curvar à ESQUERDA direto NT368 para espera.

Missed APCH: Climb to **4000'**, MNM gradient 4.0% until **1000'**. Maintain heading **342** until passing **1000'**. After, turn LEFT direct to NT368 for holding.

RMK: NIL.

DEPARTAMENTO DE CONTROLE DO ESPAÇO AÉREO



RW34R	0.8	1.3	2.0	3.0	4.0	NT372	Ground Speed (KT)	090	110	130	150	170	190
ALT	450	590	825	1143	1462	1780	FPM	500	600	700	800	900	1000
(HGT)	312	450	687	1005	1324	1642	FAF-MAPT	NIL					

LNAV/VNAV	STRAIGHT-IN	CAT	A	B	C	D	E	
	DA / (OCH)	450' / (312')					NA	
LNAV	ALS/NO ALS/ RVR ALS (m)	NIL / 1600 / NIL					NA	
	MDA / (OCH)	590' / (450')					NA	
CIRCLING	ALS/NO ALS/ RVR ALS (m)	NIL / 1600 / NIL			NIL / 2100 / NIL			
	MDA / (OCH)	NA						

CHANGES: ADEL, FREQ, IDENT, LAYOUT, VAR.