

**INSTRUMENT APPROACH
CHART (IAC)**

CANOAS / Campo Nossa Senhora de Fátima, MIL (SBCO)

**USO EXCLUSIVO ACFT MILITARES
MILITARY ACFT ONLY**

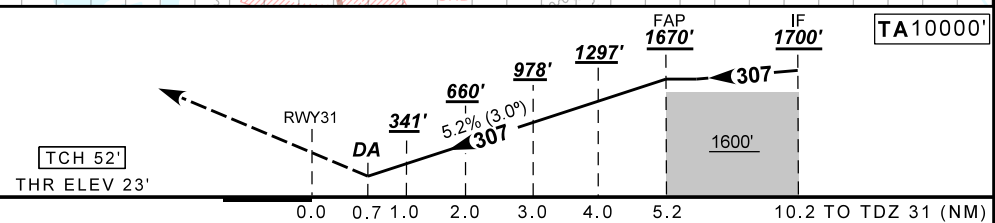
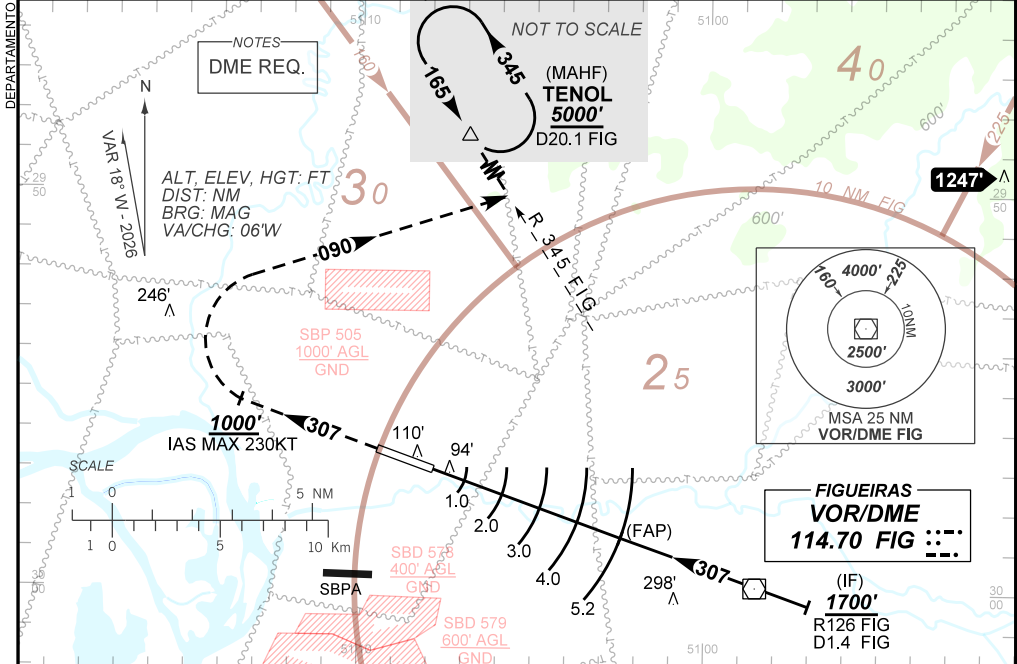
PAR Z RWY 31

AD ELEV: 26'

ATIS NIL	APP PALEGRE 119.00 120.10 120.55 128.90	PAR CANOAS 129.15 134.80	TWR CANOAS 118.50 122.80 (MIL)	GNDC CANOAS 121.70
N/A	FINAL CRS 307°	FAP 1670'	PAR DA / (OCH): 289' / (266')	N/A

APCH Perdida: Subir para **5000'**. Manter proa **307** até **1000'**. Após, curvar à DIREITA para interceptar a RDL **345** do VOR FIG até TENOL para espera.

Missed APCH: Climb to **5000'**. Maintain heading **307** until **1000'**. After, turn RIGHT to intercept **345** RDL FIG VOR until TENOL for holding.



TDZ31	0.7	1.0	2.0	3.0	4.0	FAP	Ground Speed (KT)	090	110	130	150	170	190
ALT	289	341	660	978	1297	1670	FPM	500	600	700	800	900	1000
(HGT)	266	318	637	955	1274	1647	FAF-MAPT	NA					

STRAIGHT-IN	CAT	A	B	C	D	E
PAR	DA / (OCH)	289' / (266')				
	ALS/SNO ALS/ RVR ALS (m)	NIL / 1300 / NIL				
CIRCLING	MDA / (OCH)	NA				
	VIS (m)	NA				

AIRAC AMDT 2604A1 16 APR 26

USO EXCLUSIVO ACFT MILITARES / MILITARY ACFT ONLY

**SBCO_IAC_01S 1/1
IAC PAR Z RWY 31**

DEPARTAMENTO DE CONTROLE DO ESPAÇO AEREO

CHANGES: LAYOUT, HDG, TA, VAR.