

**INSTRUMENT APPROACH
CHART (IAC)**

DIVINÓPOLIS / Brigadeiro Antônio Cabral, INTL (SNDV)

RNP RWY 35

(CAT A,B,C)

AD ELEV: 2637'

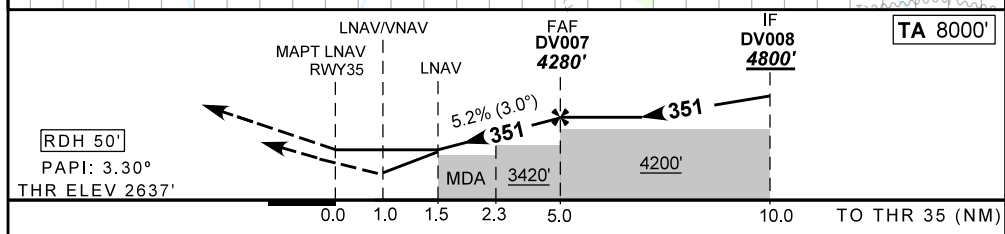
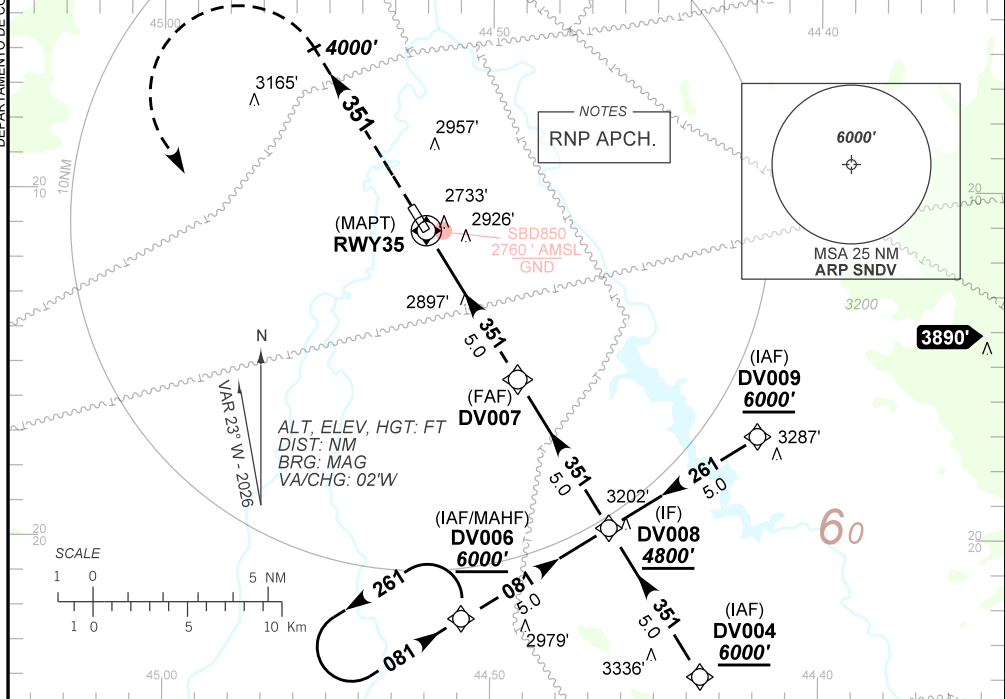
DEPARTAMENTO DE CONTROLE DO ESPAÇO AÉREO

ATIS NIL	ERAA 132.35	APP NIL	TWR NIL	GNDC NIL
-------------	----------------	------------	------------	-------------

TEMP LNAV/VNAV MIN 0°C / MAX 50°C	FINAL CRS 351°	FAF: 4280'	LNAV/VNAV DA / (OCH): 3020' / (383')	LNAV MDA / (OCH): 3150' / (520')
---	--------------------------	----------------------	--	--

APCH Perdida: Subir para **6000'**. Manter proa **351** até **4000'**, após curvar à ESQUERDA direto DV006 para espera.

Missed APCH: Climb to **6000'**. Maintain heading **351** until **4000'**, after turn LEFT direct DV006 for holding.



RWY35	1.5	2.3	3.0	4.0	DV007		Ground Speed (KT)	090	110	130	150	170	190
ALT	3150	3420	3642	3961	4280		FPM	500	600	700	800	900	NA
(HGT)	520	783	1005	1324	1643		FAF-MAPT	NIL					

STRAIGHT-IN	CAT	A	B	C	D	E
	DA / (OCH)	3020' / (383')				
LNAV/VNAV	ALS/NO ALS/ RVR ALS (m)	NIL / 1800 / NIL			NA	
	MDA / (OCH)	3150' / (520')				
LNAV	ALS/NO ALS/ RVR ALS (m)	NIL / 1800 / NIL		NIL / 2400 / NIL		
	MDA / (OCH)	NA				
CIRCLING	VIS (m)	NA				

CHANGES: PROC. VAR. PAPI.