

**INSTRUMENT APPROACH  
CHART (IAC)**

**PETROLINA / Senador Nilo Coelho (SBPL)**

**RNP RWY 31**

**AD ELEV: 1263'**

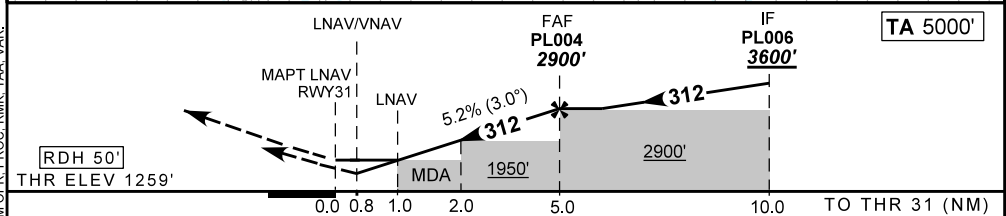
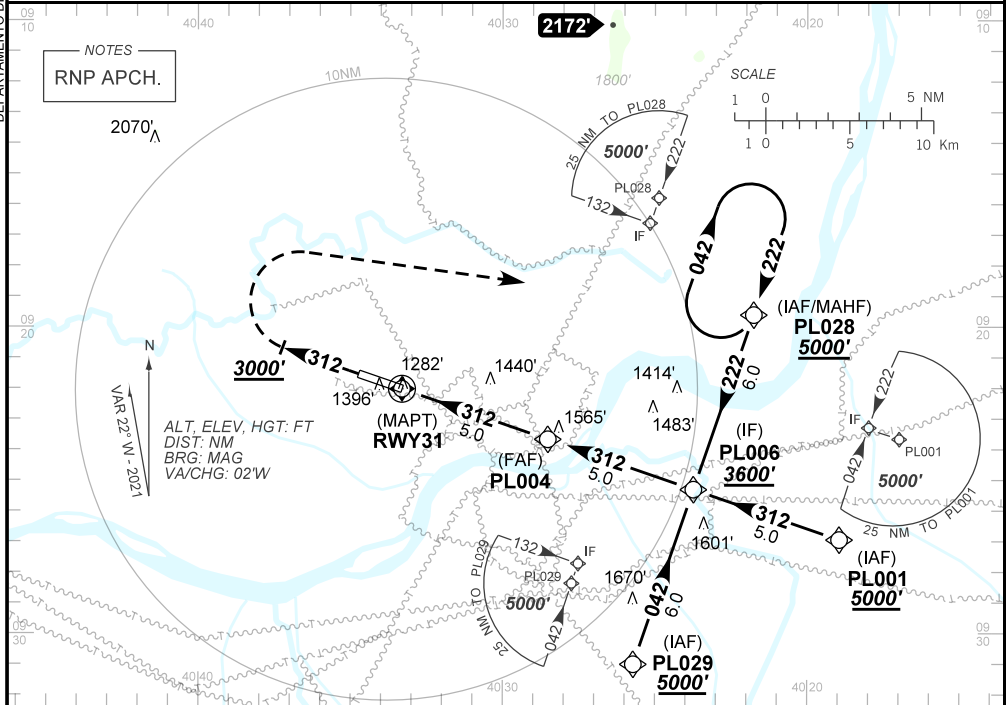
<b>ATIS</b> NIL	<b>APP</b> NIL	<b>AFIS PETROLINA</b> 125.70	<b>GNDC</b> NIL
--------------------	-------------------	---------------------------------	--------------------

<b>TEMP LNAV/VNAV</b> MIN 10°C / MAX 50°C	<b>FINAL CRS</b> 312°	<b>FAF:</b> 2900'	<b>LNAV/VNAV</b> DA / (OCH): 1551' / (292')	<b>LNAV</b> MDA / (OCH): 1640' / (380')
--	--------------------------	----------------------	--	--

APCH Perdida: Subir para **5000'**. Manter proa **312** até **3000'**. Após, curvar à DIREITA direto PL028 para espera.  
Missed APCH: Climb to **5000'**. Maintain heading **312** until **3000'**. After, turn RIGHT direct to PL028 for holding.

RMK: NIL.

DEPARTAMENTO DE CONTROLE DO ESPAÇO AÉREO



RWY31	0.8	1.0	2.0	3.0	4.0	PL004	Ground Speed (KT)	090	110	130	150	170	190
ALT	1551	1640	1950	2263	2583	2900	FPM	500	600	700	800	900	NA
(HGT)	292	380	691	1005	1324	1641	FAF-MAPT	NIL					

STRAIGHT-IN	CAT	A	B	C	D	E
	DA / (OCH)	1551' / (292')				
LNAV/VNAV	ALS/NO ALS/ RVR ALS (m)	NIL / 1400 / NIL				
	MDA / (OCH)	1640' / (380')				
LNAV	ALS/NO ALS/ RVR ALS (m)	NIL / 1600 / NIL		NIL / 1700 / NIL		
	MDA / (OCH)	NA				
CIRCLING	MDA / (OCH)	NA				
	VIS (m)	NA				

CHANGES: AD ELEV, IDENT, LAYOUT, MIN OPR, PROC, RMK, TAA, VAR.