

**INSTRUMENT APPROACH
CHART (IAC)**

PORTO VELHO / Gov. Jorge Teixeira de Oliveira, INTL (SBPV)

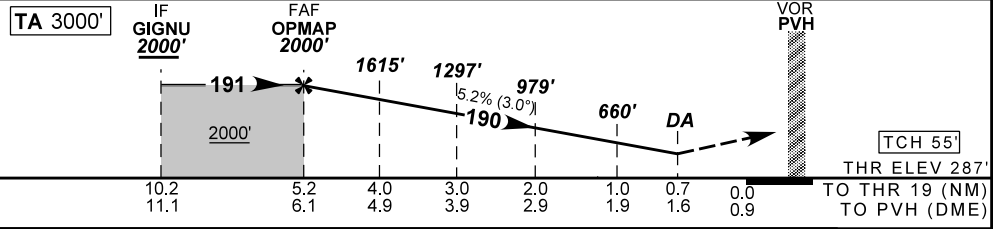
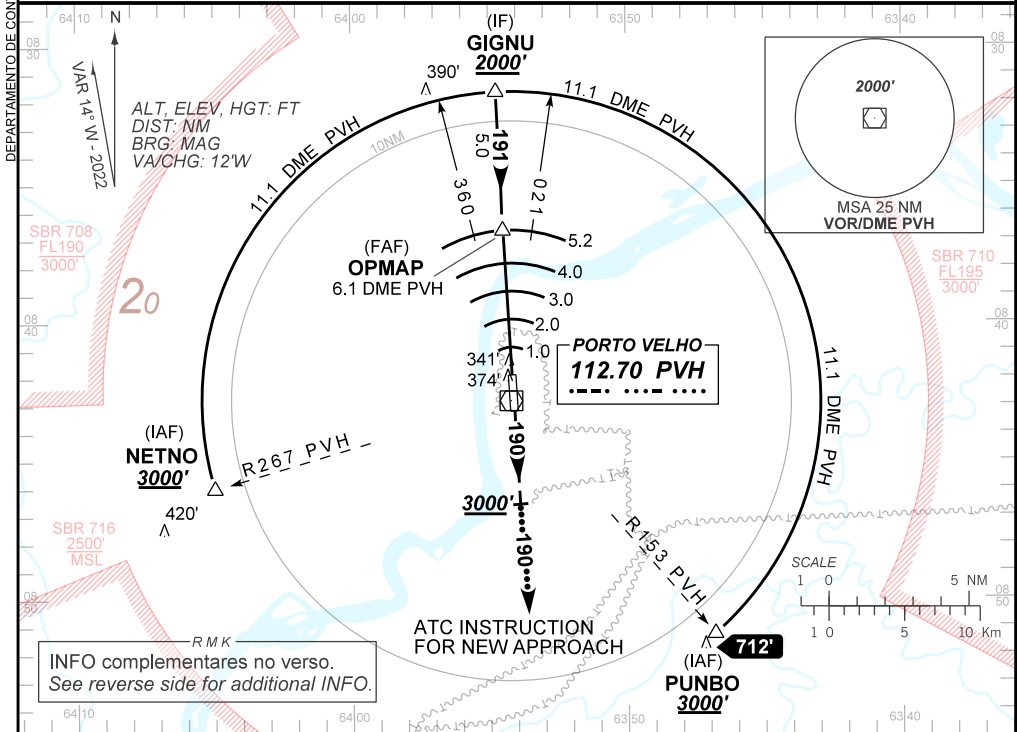
**USO EXCLUSIVO ACFT MILITARES
MILITARY ACFT ONLY**

PAR Y RWY 19

AD ELEV: 295'

| | | | | |
|-------------------------|---|--|---|--------------------|
| D-ATIS 127.45 | APP PORTO VELHO 120.25 120.80 | PAR PORTO VELHO G54 G150 122.025 345.125 | TWR PORTO VELHO 118.20 118.55 | GNDC NIL |
| N/A | FINAL CRS 190° | FAF: 2000' | PAR DA / (OCH): 553' / (266') | N/A |

APCH Perdida: Subir para **3000'** na proa **190°** e aguardar intruções ATC.
Missed APCH: Climb to **3000'** on heading **190°** and expect ATC instructions.



| | | | | | | | | | | | | | |
|-------|------|------|-----|-----|-----|-------|-------------------|-----|-----|-----|-----|-----|------|
| OPMAP | 4.0 | 3.0 | 2.0 | 1.0 | 0.7 | RWY19 | Ground Speed (KT) | 090 | 110 | 130 | 150 | 170 | 190 |
| 2000 | 1615 | 1297 | 979 | 660 | 553 | ALT | FPM | 500 | 600 | 700 | 800 | 900 | 1000 |
| 1713 | 1328 | 1010 | 692 | 373 | 266 | (HGT) | FAF-MAPT | NA | | | | | |

| | | | | | | |
|-------------|-------------------------|------------------|---|---|---|---|
| STRAIGHT-IN | CAT | A | B | C | D | E |
| | DA / (OCH) | 553' / (266') | | | | |
| PAR | ALS/NO ALS/ RVR ALS (m) | NIL / 1300 / NIL | | | | |
| | MDA / (OCH) | NA | | | | |
| CIRCLING | VIS (m) | NA | | | | |

CHANGES: EAC. VAR.

AIRAC AMDT 2203A1 24 MAR 22

USO EXCLUSIVO ACFT MILITARES / MILITARY ACFT ONLY

**SBPV_IAC_00Q 1/2
IAC PAR Y RWY 19**

DEPARTAMENTO DE CONTROLE DO ESPAÇO AÉREO

RMK

1 - Dados complementares:
Complementary data:

| IDENT | LATITUDE / LONGITUDE |
|--------------|-----------------------------|
| NETNO | S 08:46.02 / W 64:04.99 |
| PUNBO | S 08:51.29 / W 63:46.83 |
| GIGNU | S 08:31.66 / W 63:54.72 |
| OPMAP | S 08:36.68 / W 63:54.49 |
| RWY19 | S 08:41.91 / W 63:54.18 |
| PVH | S 08:42.84 / W 63:54.21 |

CHANGES: EAC, VAR.