

INSTRUMENT APPROACH  
CHART (IAC)

NATAL / Campo Augusto Severo, MIL (SBNT)

AD ELEV: 169'

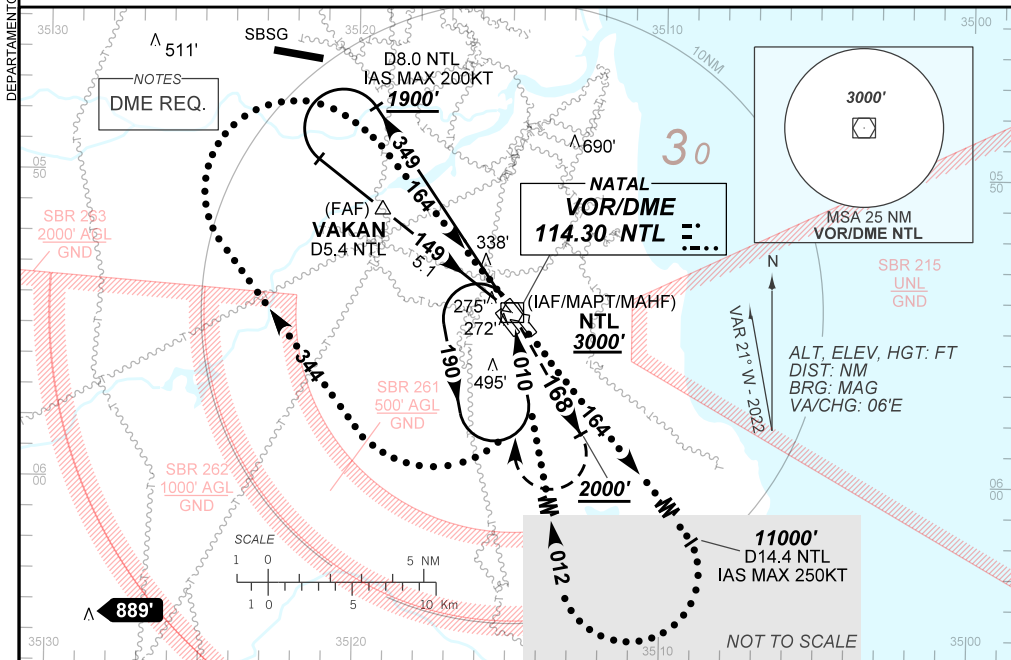
USO EXCLUSIVO ACFT MILITARES  
MILITARY ACFT ONLY

VOR X RWY 16R

D-ATIS <b>132.65</b>	APP NATAL <b>119.30 119.65 120.65 129.80</b>			TWR NATAL <b>118.70 122.80</b>	GNDC NATAL <b>121.90</b>
VOR NTL <b>114.30 MHz</b>	FINAL CRS <b>149°</b>	FAF: <b>1830'</b>	N/A	VOR MDA / (OCH): <b>650' / (490')</b>	

APCH Perdida: 1) Subir para **3000'**. Manter a RDL **168** do VOR NTL até **2000'**. Após, curvar à DIREITA direto VOR NTL para espera. 2) IAS MAX 200KT.

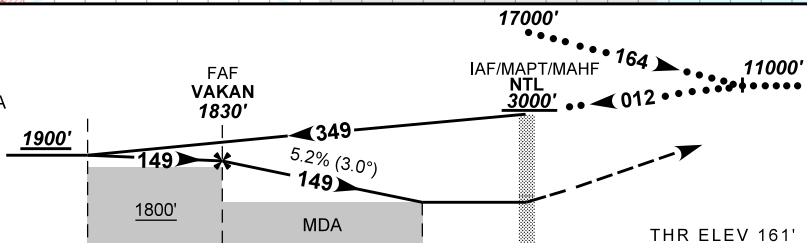
Missed APCH: 1) Climb to **3000'**. Maintain **168** RDL NTL VOR until **2000'**. After, turn RIGHT direct NTL VOR for holding. 2) IAS MAX 200KT.



TA 4000'

PENETRAÇÃO  
IAS MAX 250KT  
RAZÃO DE DESCIDA  
2400 FPM

PENETRATION  
IAS MAX 250KT  
RATE OF DESCENT  
2400 FPM



TO THR 16R(NM)	7.7	5.1	1.4	0.0
TO NTL (DME)	8.0	5.4	1.7	0.3

VAKAN	4.0	3.0	2.0	1.4	RW16R	Ground Speed (KT)	090	110	130	150	170	190	
	1830	1485	1166	848	650	ALT	FPM	500	600	700	800	900	1000
	1669	1324	1005	687	490	(HGT)	FAF-MAPT	NA					

STRAIGHT-IN	CAT	A	B	C	D	E
	MDA / (OCH)	650' / (490')				
VOR	ALS/NO ALS/ RVR ALS (m)	NIL / 1600 / NIL			NIL / 2300 / NIL	
	MDA / (OCH)	670' / (510')	910' / (750')		1190' / (1030')	
CIRCLING	VIS (m)	1600	3200		4800	

AIRAC AMDT 2504A1 17 APR 25

USO EXCLUSIVO ACFT MILITARES / MILITARY ACFT ONLY

SBNT\_IAC\_01V 1/1  
IAC VOR X RWY 16R

DEPARTAMENTO DE CONTROLE DO ESPAÇO AEREO