

**INSTRUMENT APPROACH
CHART (IAC)**

BAGÉ / Comandante Gustavo Kraemer (SBBG)

RNP RWY 24

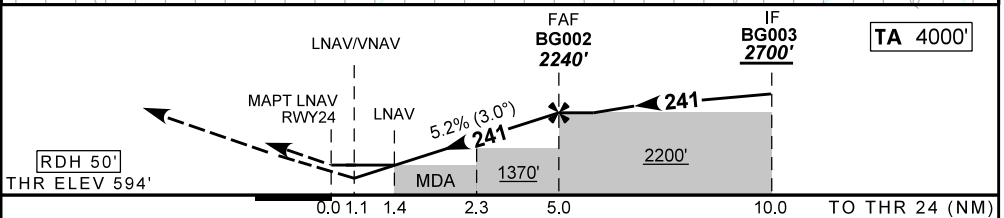
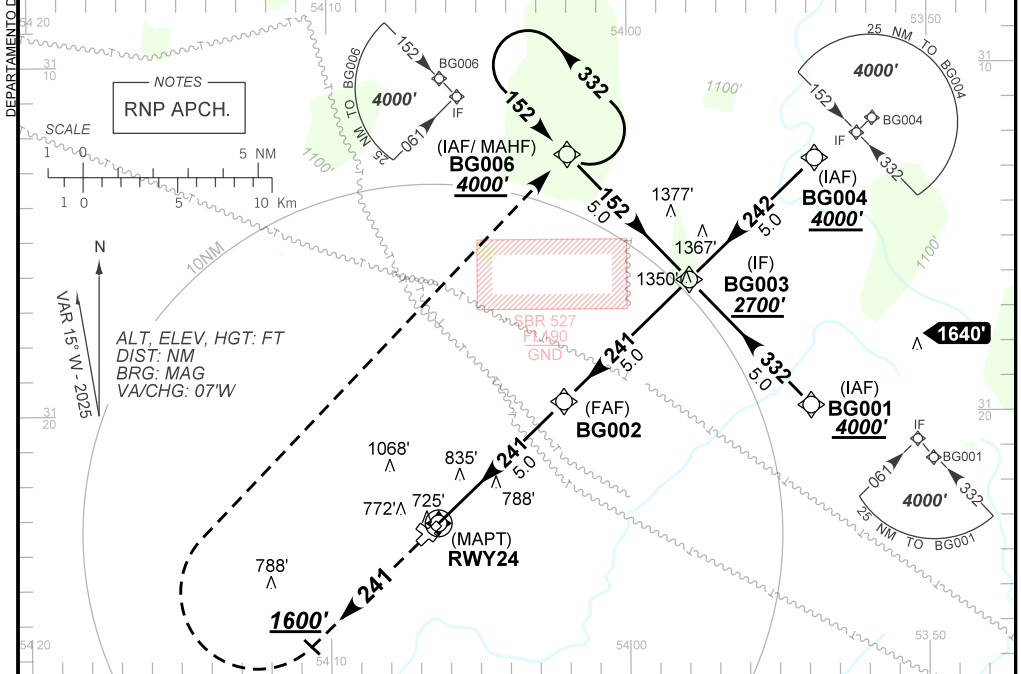
(CAT A, B, C)

AD ELEV: 597'

ATIS NIL	ERAA 132.60	APP NIL	AFIS BAGÉ 125.85	GNDC NIL
TEMP LNAV/VNAV MIN -10°C / MAX 50°C	FINAL CRS 241°	FAF: 2240'	LNAV/VNAV DA / (OCH): 990' / (396')	LNAV MDA / (OCH): 1070' / (480')

APCH Perdida: Subir para **4000'** proa **241**. Após **1600'**, curvar à DIREITA direto BG006 para espera.
Missed APCH: Climb to **4000'** heading **241**. After **1600'**, turn RIGHT direct BG006 for holding.

RMK: Procedimento não utilizável quando SBR 527 estiver ativado.
Procedure not usable when SBR 527 is activated.



RWY24	1.4	2.3	3.0	4.0	BG002	Ground Speed (KT)	090	110	130	150	170	190
ALT	1070	1376	1699	1918	2240	FPM	500	600	700	800	NA	
(HGT)	480	782	1005	1324	1646	FAF-MAPT	NIL					

STRAIGHT-IN	CAT	A	B	C	D	E
	DA / (OCH)	990' / (396')				
LNAV/VNAV	ALS/NO ALS/ RVR ALS (m)	NIL / 1800 / NIL				
	MDA / (OCH)	1070' / (480')				
LNAV	ALS/NO ALS/ RVR ALS (m)	NIL / 1800 / NIL		NIL / 2200 / NIL		
	MDA / (OCH)	NA				
CIRCLING	MDA / (OCH)	NA				
	VIS (m)	NA				

CHANGES: AD ELEV. OBST. PROC. VAR.