

**INSTRUMENT APPROACH  
CHART (IAC)**

**BRASÍLIA / Pres. Juscelino Kubitschek, INTL (SBBR)**

**AD ELEV: 3498'**

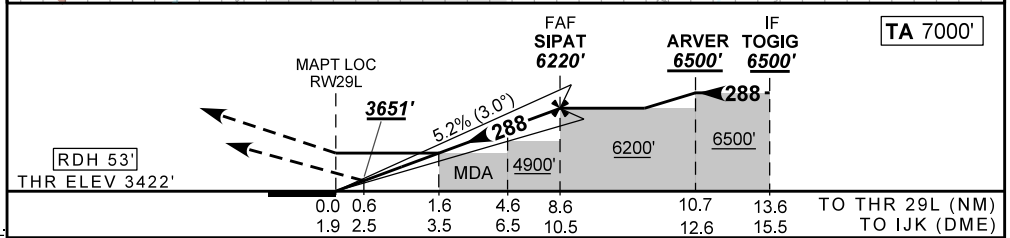
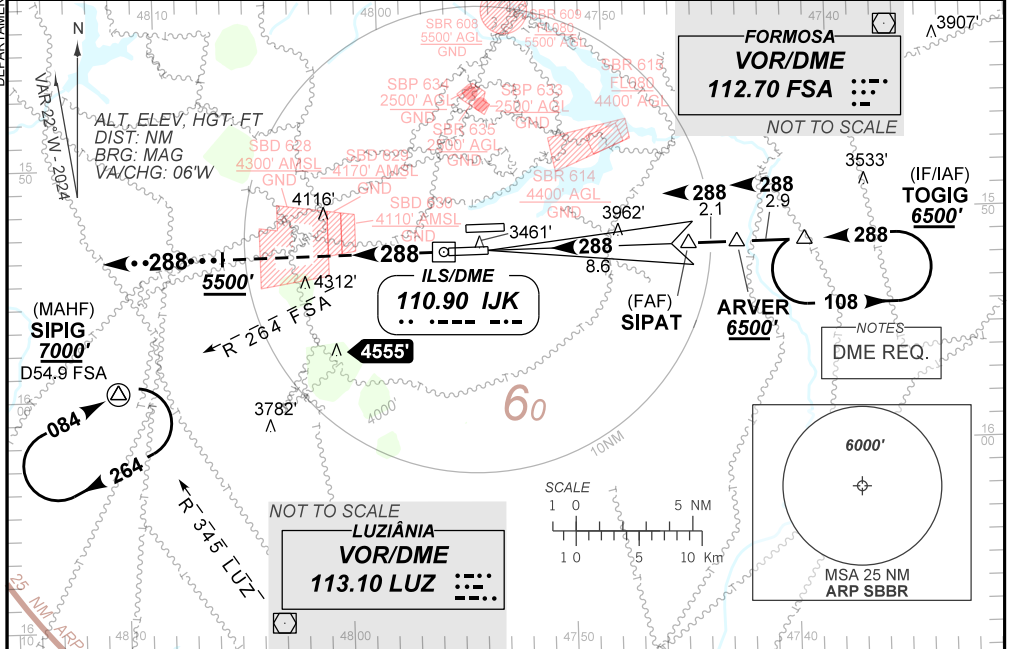
**ILS W or LOC W RWY 29L**

D-ATIS <b>127.80</b>	APP BRASÍLIA <b>129.15 129.60 119.50</b>	TWR BRASÍLIA <b>118.10 118.45 118.75</b>	GND C BRASÍLIA <b>121.80 121.95</b>
-------------------------	---	---	--

ILS/DME IJK <b>110.90 MHz</b>	FINAL CRS <b>288°</b>	FAF: <b>6220'</b>	CAT I DA / (OCH): <b>3651' / (229')</b>	LOC MDA / (OCH): <b>3990' / (570')</b>
----------------------------------	--------------------------	----------------------	--	---

APCH Perdida: Subir para **7000'**. Manter proa **288** até **5500'**. Aguardar vetorção radar para interceptar RDL **345** do VOR LUZ para espera em SIPIG.  
 Missed APCH: Climb to **7000'**. Maintain heading **288** until **5500'**. Wait for radar vectoring to intercept **345** RDL LUZ VOR for holding on SIPIG.

RMK: (\*) VIS RVR ALS 550m para APCH utilizando Diretor de Voo, Piloto Automático ou Head-Up (HUD).  
 (\*) VIS RVR ALS 550m for approach using a Flight Director, Autopilot or Head-Up Display (HUD).



RWY29L	1.6	2.0	3.0	4.0	5.0	SIPAT	Ground Speed (KT)	090	110	130	150	170	190
ALT	3990	4112	4430	4749	5067	6220	FPM	500	600	700	800	900	1000
(HGT)	570		1008	1327	1645	2798	FAF-MAPT	NA					

STRAIGHT-IN	CAT	A	B	C	D	E
	DA / (OCH)	3651' / (229')				
LOC	ALS/NO ALS/ RVR ALS (m)	800 / 1200 / 700 (*)				
	MDA / (OCH)	3990' / (570')				
CIRCLING	ALS/NO ALS/ RVR ALS (m)	800 / 1600 / 700		1900 / 2600 / NIL		
	MDA / (OCH)	NA				
VIS (m)		NA				

DEPARTAMENTO DE CONTROLE DO ESPAÇO AÉREO

CHANGES: EAC, LAYOUT, MINM OPR, WPT.