

**INSTRUMENT APPROACH CHART (IAC)**

**SÃO PAULO / Guarulhos - Gov. André Franco Montoro, INTL (SBGR)**

**RNAV(GNSS) Z RWY 09L**

**AD ELEV: 2461'**

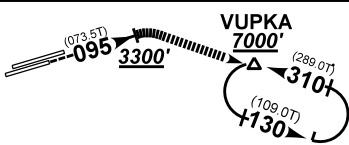
D-ATIS <b>127.75</b>	APP SÃO PAULO <b>129.75 119.15 120.45 120.85 133.85 121.50</b>	TWR GUARULHOS <b>118.40 132.75 135.20 121.50</b>	GNDC GUARULHOS <b>121.70 126.90</b>
<b>N/A</b>	FINAL CRS <b>095°</b>	FAF: <b>4090'</b>	LNAV/VNAV DA / (OCH): <b>2830' (390')</b>
			LNAV MDA / (OCH): <b>3020' (580')</b>

APCH Perdida: Subir para **6500'**, gradiente MNM 5%. Manter rumo **095** até cruzar **5000'**. Após, curvar à ESQUERDA direto UTBUR para espera.

Missed APCH: Climb to **6500'**, MNM gradient 5%. Maintain course **095** until passing **5000'**. Then, turn LEFT direct UTBUR for holding.

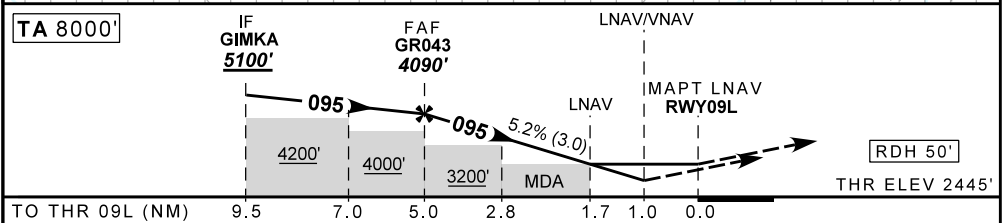
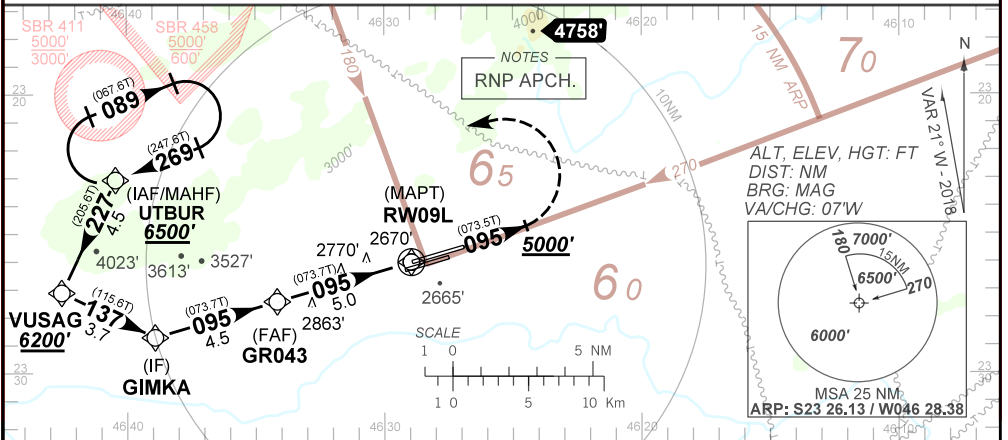
RMK: 1) Para sistemas BARO-VNAV não compensados, procedimento LNAV/VNAV não autorizado abaixo de -10°C.

1) For uncompensated systems BARO-VNAV, LNAV/VNAV procedure not authorized below -10°C.



APROXIMAÇÃO PERDIDA VISUAL RWY 09R: Subir para **7000'**, proa **095**. Após cruzar **3300'**, curvar à DIREITA proa **130**. Após DCT VUPKA.

VISUAL MISSED APPROACH RWY 09R: Climb to **7000'**, heading **095**. After passing **3300'**, turn RIGHT heading **130**. After DCT VUPKA.



GR043	4.0	3.0	2.0	1.7	1.0	RW09L	KT	90	110	130	150	170	190
4090	3769	3451	3132	3025	2814	ALT	FPM	500	600	700	800	900	1000
1650	1324	1006	687	580	369	(HGT)	FAF-MAPT	NA					

STRAIGHT-IN	CAT	A	B	C	D	E
LNAV/VNAV	DA / (OCH)	2830' / (390')				
	ALS/NO ALS/ RVR ALS (m)	800 / 1600 / NIL		1100 / 1800 / NIL		
LNAV	MDA / (OCH)	3020' / (580')				
	ALS/NO ALS/ RVR ALS (m)	800 / 1600 / NIL		1900 / 2600 / NIL		
CIRCLING	MDA / (OCH)	NA				
	VIS (m)	NA				

CHANGES: PROC.