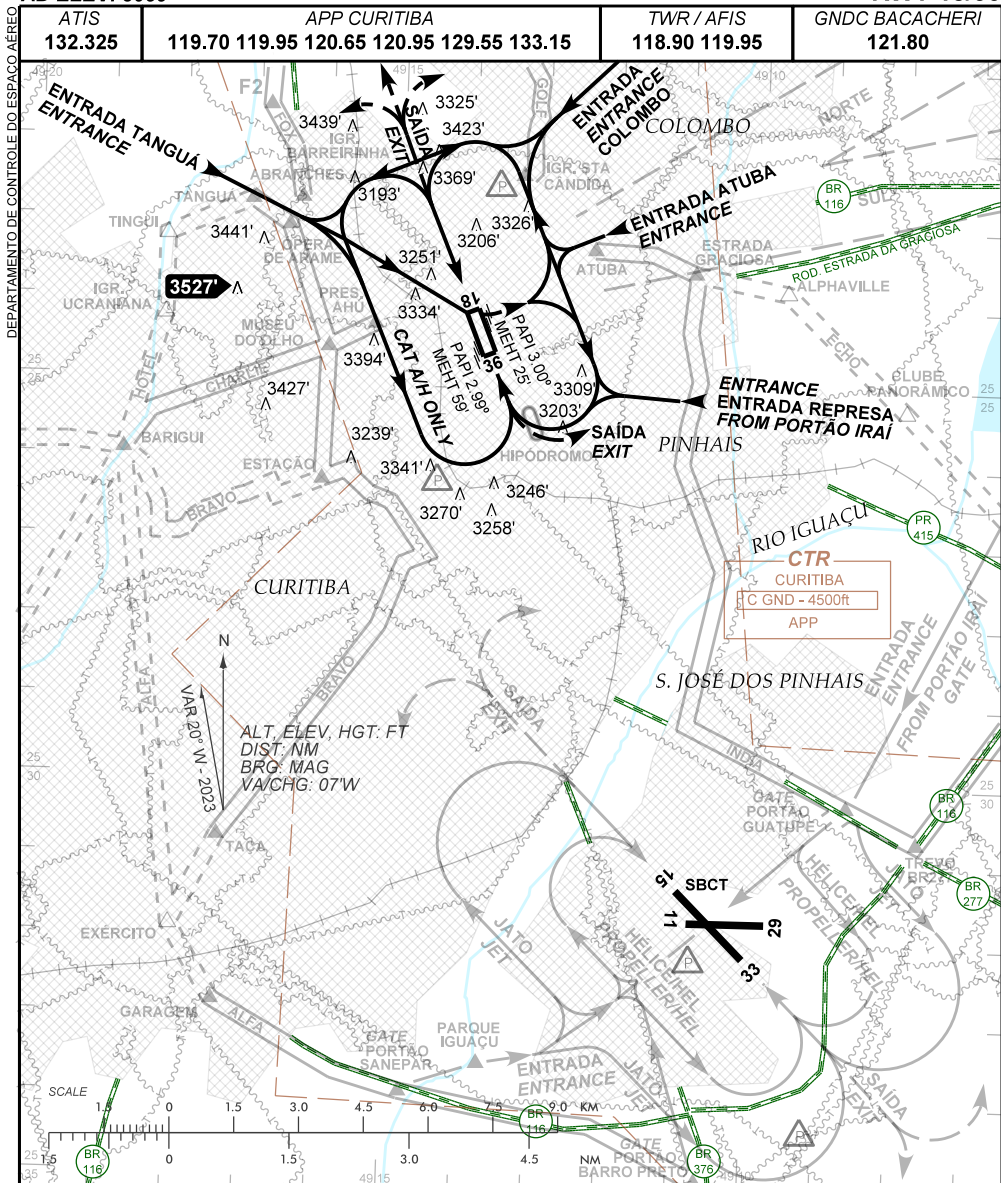


VISUAL APPROACH CHART
(VAC)

CURITIBA / Bacacheri (SBBI)

AD ELEV: 3059'

RWY 18/36



RMK:

- 1 - ALTITUDES MÍNIMAS NO CIRCUITO DE TRÁFEGO / MINIMUM ALTITUDES IN TRAFFIC CIRCUIT:
- 1.1 - JATO / JET: 4500' - SOMENTE SETOR E / E SECTOR ONLY. IAS MAX 140KT.
 - 1.2 - HÉLICE / PROPELLER
 - a) - SETOR E / E SECTOR: 4100' CAT A, B, C. IAS MAX 140KT.
 - b) - SETOR W / W SECTOR: 4000' SOMENTE CAT A / CAT A ONLY. IAS MAX 110KT.
 - 1.3 - HELICÓPTERO / HELICOPTER: 3700' TODOS OS SETORES / ALL SECTORS.
- 2 - INFORMAÇÕES COMPLEMENTARES NO VERSO. SEE REVERSE SIDE FOR ADDITIONAL INFO.

CHANGES: AFIS LAYOUT.

— RMK —

- 3 - ARR RWY 36 OU DEP RWY 18 NÃO ULTRAPASSAR O HIPÓDROMO PARA O SETOR SUL.
ARR RWY 36 OR DEP RWY 18 LIMITED BY THE HIPPODROME FOR THE SOUTH SECTOR.
- 4 - PARA POUZO EM SBCT, VER VAC DESSE AERÓDROMO.
FOR LANDING AT SBCT, SEE VAC OF THIS AERODROME.
- 5 - OBSERVAR AIC SOBRE CIRCULAÇÃO AÉREA VISUAL NA TERMINAL CURITIBA.
SEE AIC ABOUT VISUAL FLIGHT IN CURITIBA TERMINAL AREA.