

STANDARD DEPARTURE CHART
INSTRUMENT (SID)

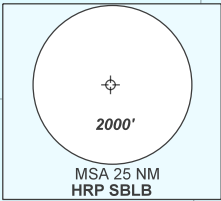
MACAÉ / Plataforma PETROBRÁS 25 P-25 (SBLB)

RNAV GELET 1A
(CAT H)

HELPN ELEV: 74'

TA 3000'	ATIS NIL	TWR NIL	APP MACAÉ 131.975 126.900 120.00 128.95 129.30	ACC NIL
----------	-------------	------------	---	------------

DEPARTAMENTO DE CONTROLE DO ESPAÇO AÉREO



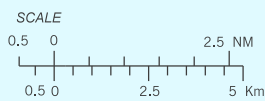
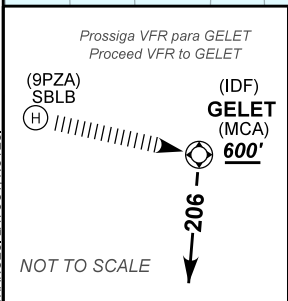
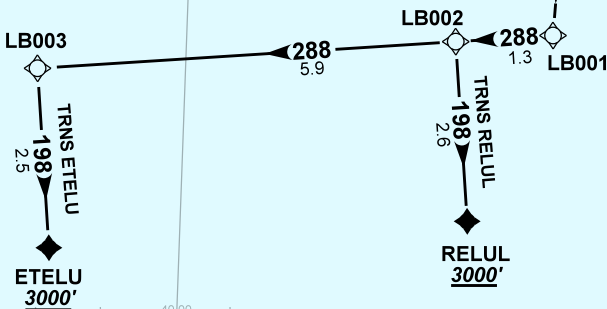
NOTES
GNSS REQ.
RNP 1 or RNAV 1.

- R M K
- 1 - Responsabilidade do piloto em comando a separação com obstáculos e terreno até GELET.
Responsibility of the pilot in command for separation with obstacles and terrain up to GELET.
 - 2 - Manter regras de voo visual (VFR) até GELET.
Maintain visual flight rules (VFR) up to GELET.
 - 3 - Procedimento poderá ser utilizado de helideques situados dentro de 10NM de GELET, desde que em coordenação com o órgão ATS.
Procedure may be used from helidecks located within 10NM of GELET, provided that in coordination with the ATS unit.

N
VAR 24° N - 2019
ALT, ELEV, HGT: FT
DIST: NM
BRG: MAG
VA/CHG: 05' W

(H)
9PRT

(9PZA)
SBLB (H)
(IDF)
GELET (MCA) 600'



CHANGES: LAYOUT: NOTES.