

**INSTRUMENT APPROACH  
CHART (IAC)**

**CURITIBA / Bacacheri (SBB)**

**NDB B RWY 18/36**

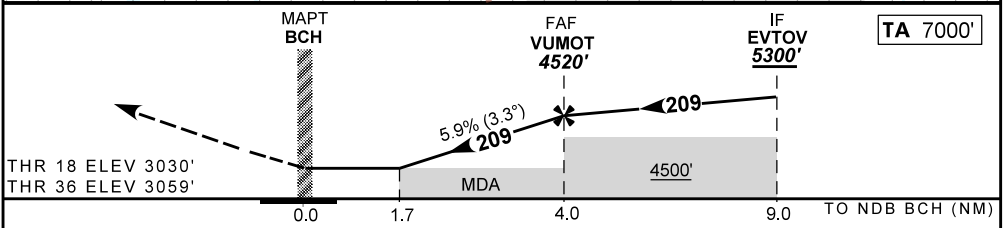
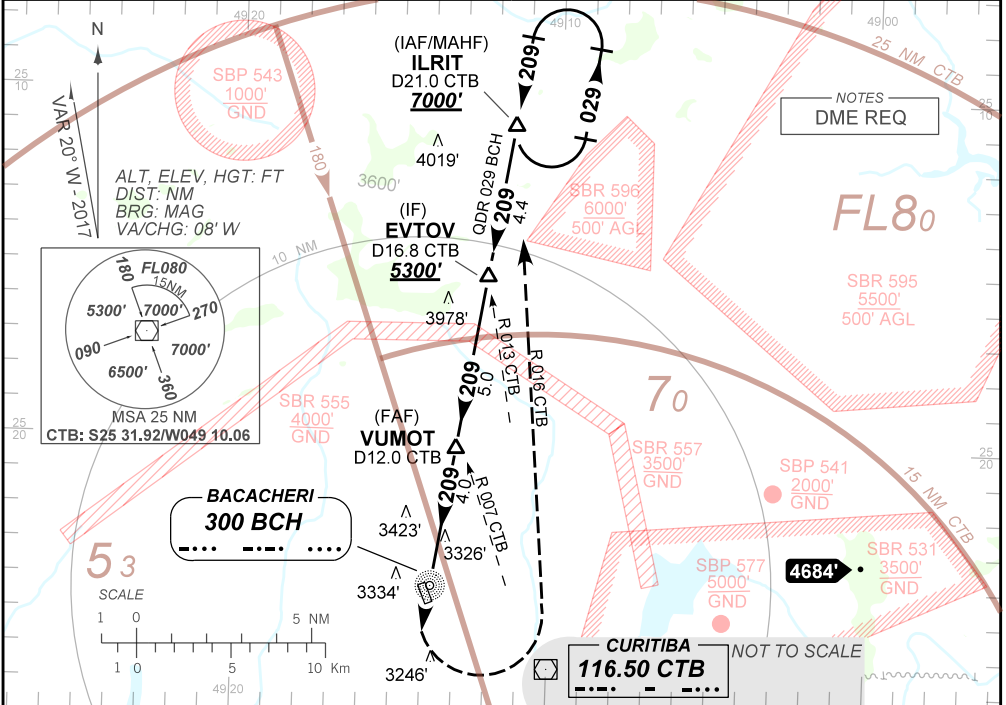
**AD ELEV: 3059'**

ATIS <b>132.325</b>	APP CURITIBA <b>119.95 119.70 120.65 120.95 129.55 133.15 121.50</b>				TWR BACACHERI <b>118.90</b>	GNDC BACACHERI <b>121.80</b>
------------------------	---	--	--	--	--------------------------------	---------------------------------

NDB BCH <b>300 KHz</b>	FINAL CRS <b>209°</b>	FAF <b>4520'</b>	N/A	NDB MDA / (OCH): <b>N/A</b>
---------------------------	--------------------------	---------------------	-----	--------------------------------

APCH Perdida: Subir para **7000'**, curvando à ESQUERDA, para interceptar RDL **016** do VOR CTB até ILRIT para espera.  
Missed APCH: **Climbing LEFT turn to 7000'** to intercept **016** CTB VOR RDL up to ILRIT for holding.

- RMK: 1) Proibido circular setor W (oeste) do AD entre os AZM 191 e 333.  
2) Procedimento para circular RWY 18: após bloqueio do NDB BCH, curvar à esquerda, circular pelo setor E (leste).  
1) Prohibited to circle W sector (west) from AD between AZM 191 and 333.  
2) Procedure to circle RWY 18: after BCH NDB overhailing, turn left, circling by E sector (east).



MAPT	1.7	2.0	3.0	VUMOT	KT	090	110	130	150	170	190
ALT	3720	3810	4160	4520	FPM	500	600	700	NA		
(HGT)	670	751	1101	1461	FAF-MAPT	NA					

STRAIGHT-IN	CAT	A	B	C	D	E
	MDA / (OCH) / TETO	NA				
CIRCLING	ALS/NO ALS/ RVR ALS (m)	NA				
	MDA / (OCH) / TETO	3720' / (670') / 700'	NA			
	VIS (m)	3700				

CHANGES: NEW CHART.